

# Interactive Tools to Help Improve Order Execution

## Order Execution Dashboard for Equity Index Futures

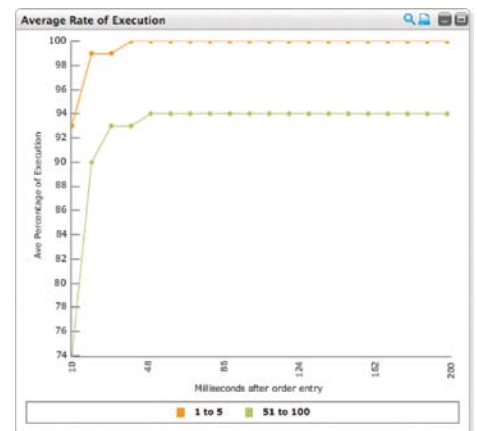
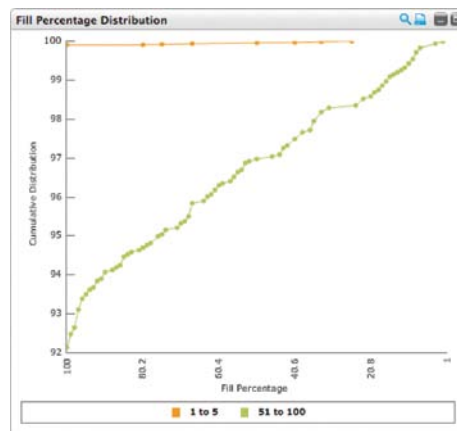
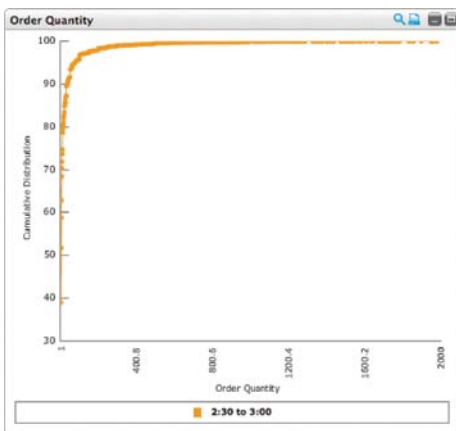


If you trade CME E-mini S&P 500, E-mini NASDAQ-100 or E-mini Dow (\$5) futures, now you can easily explore how to achieve optimal fill percentages, access market liquidity, minimize market impact and maximize returns. Using data from the preceding weeks, you can easily compare and contrast how different order quantity sizes or placement times may affect outcomes.

- **Select data views** by order size, time frame (market open, midday and market close) and product
- **See** distribution of order fill percentages
- **View** average execution speed of various order sizes
- **Compare** slippage rates vs. top of book and mid-point prices of bid/ask spreads
- **View** quality of central order book by market depth and width

### Is it better to enter 1,000 1-lot orders or 100 10-lot orders?

Use the **Order Quantity** and **Fill Percentage Distribution** charts to analyze the order quantity size at which you'll have a higher likelihood of achieving a successful fill percentage.



### Are there more small orders or large orders in the market?

The **Order Quantity Distribution** chart lets you easily see the distribution of order quantities over a specific time period.

### How does order size affect fill percentage?

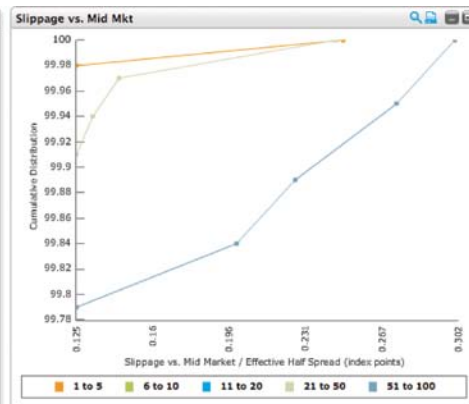
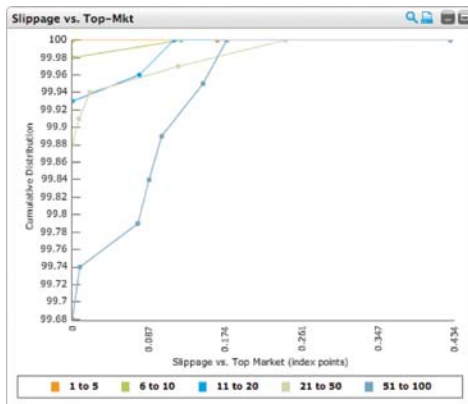
The **Fill Percentage Distribution** chart shows how order quantity sizes affect the likelihood of being fully to partially filled.

### How does order quantity size affect the speed of execution?

The **Average Rate of Execution** chart enables you to easily compare and contrast how quickly (in milliseconds) various order quantity sizes were filled over a specific time period.

## How does the order quantity affect the quality of the fill or final execution price?

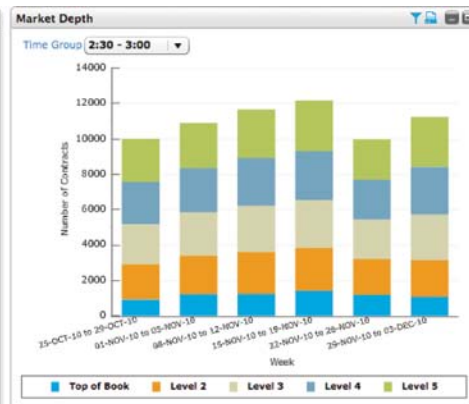
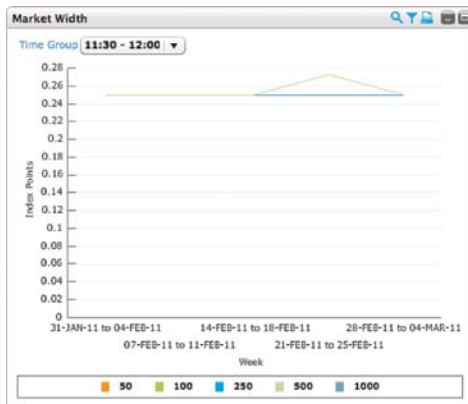
The **Slippage vs. Top of Market** and the **Slippage vs. Mid Market** charts plot the distribution of slippage rates versus the top and midpoints of the market. The top and midpoints are represented by the bid/ask spread for the selected time frame(s).



## How does that information compare with the displayed order book?

The displayed **Market Width and Depth** charts offer information on the quality of the displayed order book.

The **Market Width** chart plots the change in index point spread (x-axis) of the average bid-ask spread for various order quantity sizes by week (y-axis). The tools in the upper-right corner of the chart enable you to maximize the chart and focus in on a time period to further examine overlap among order quantity sizes (more overlap equals greater market liquidity).



The **Market Depth** chart (above, right) illustrates distribution of contracts (x axis) at the top of book and subsequent levels down, over recent weeks (y axis).

## Visit [www.cmegroup.com/oed](http://www.cmegroup.com/oed) today.

For more information about the Order Execution Dashboard, contact a member of the Equity Products team:

**Richard Co, Director**  
312 930 3227  
richard.co@cmegroup.com

**Tom Boggs, Director**  
312 930 3038  
thomas.boggs@cmegroup.com

## Your feedback is important!

Please, submit suggestions or comments to [www.cmegroup.com/oed](http://www.cmegroup.com/oed).

Futures trading is not suitable for all investors, and involves the risk of loss. Futures are a leveraged investment, and because only a percentage of a contract's value is required to trade, it is possible to lose more than the amount of money deposited for a futures position. Therefore, traders should only use funds that they can afford to lose without affecting their lifestyles. And only a portion of those funds should be devoted to any one trade because they cannot expect to profit on every trade. All references to options refer to options on futures.

CME Group is a trademark of CME Group Inc. The Globe Logo, CME, E-mini and Chicago Mercantile Exchange are trademarks of Chicago Mercantile Exchange Inc. CBOT and the Chicago Board of Trade are trademarks of the Board of Trade of the City of Chicago, Inc. NYMEX is a registered trademark of the New York Mercantile Exchange, Inc. All other trademarks are the property of their respective owners.

S&P 500® is a trademark of The McGraw-Hill Companies, Inc. and has been licensed for use by Chicago Mercantile Exchange Inc. NASDAQ-100® is a registered trademark of The Nasdaq Stock Market, Inc ("Corporations"). The Corporations and Nasdaq Financial Products Services, Inc. make no warranty, express or implied, and bear no liability with respect to the NASDAQ-100 Index, its use or any data included therein.

"Dow Jones Industrial Average" is a service mark of Dow Jones Indexes and has been licensed for use for certain purposes by the Board of Trade of the City of Chicago (CBOT). The futures and futures options contracts based on these indexes are not sponsored, endorsed, sold or promoted by Dow Jones, and Dow Jones makes no representation regarding the advisability of trading in such contract(s).

References to CME Clearing are to CME's U.S. Clearinghouse.

The information within this brochure has been compiled by CME Group for general purposes only. CME Group assumes no responsibility for any errors or omissions. Additionally, all examples in this brochure are hypothetical situations, used for explanation purposes only, and should not be considered investment advice or the results of actual market experience. All matters pertaining to rules and specifications herein are made subject to and are superseded by official CME, CBOT and NYMEX rules. Current rules should be consulted in all cases concerning contract specifications.