

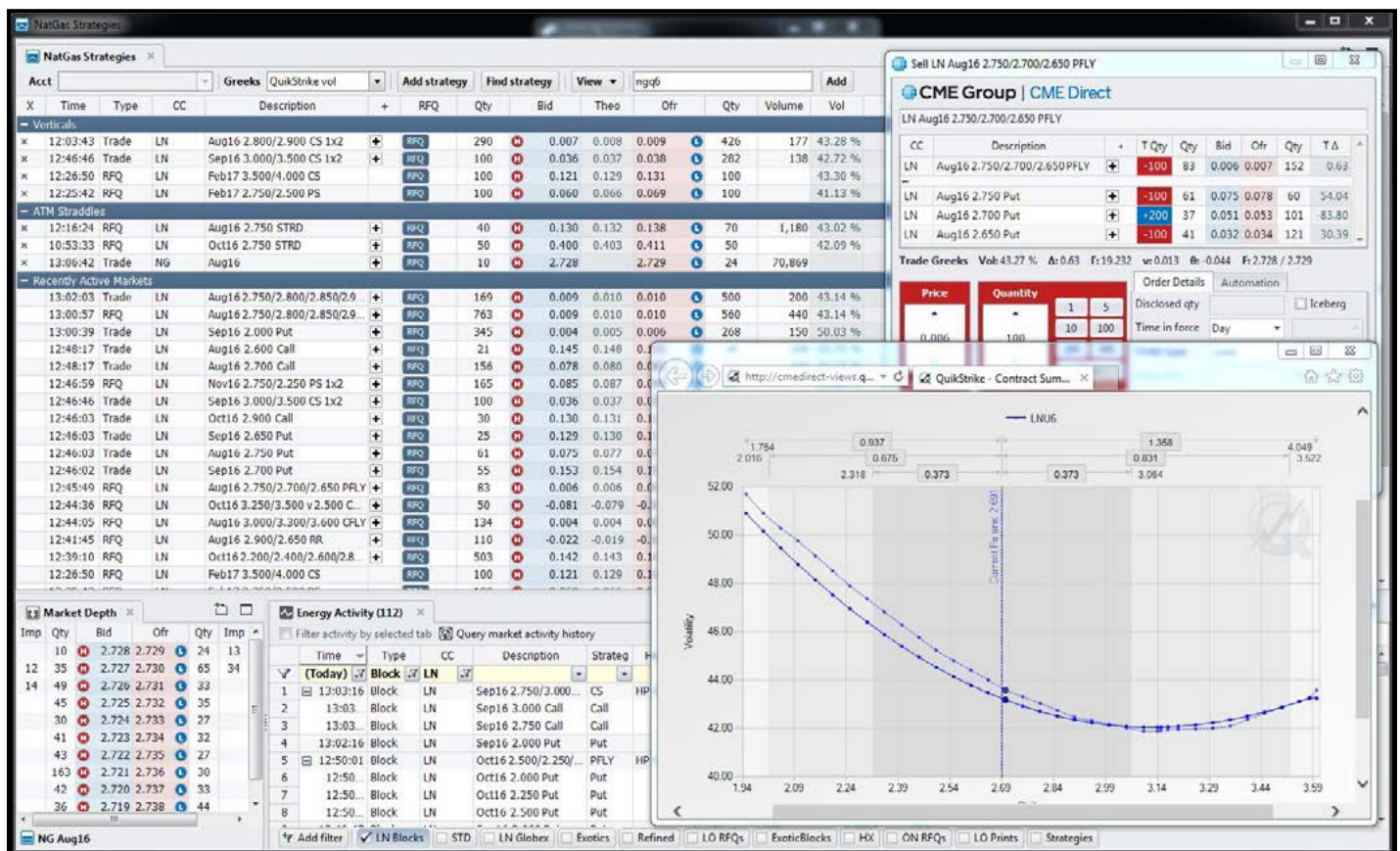
# CME Direct

## FOR THE TRADER

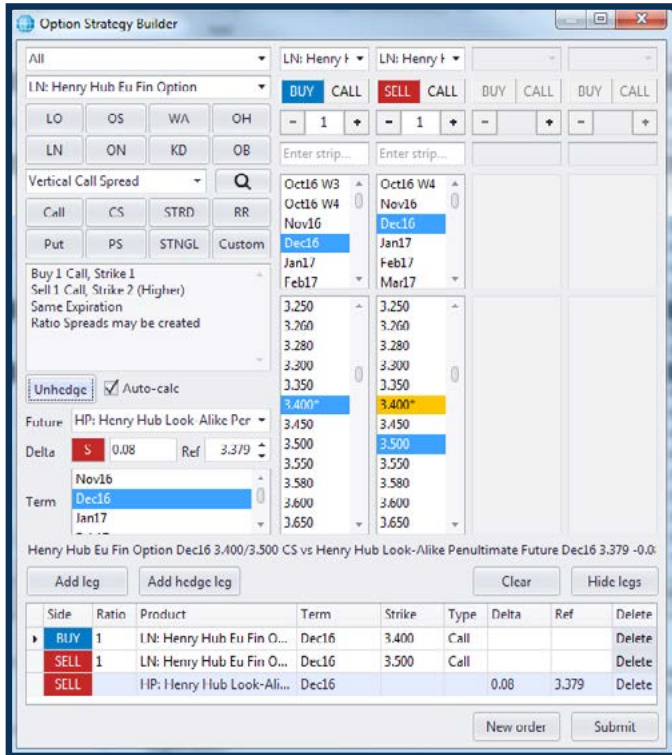
### Access to CME Group futures, options and block markets – all on one screen

Delivered securely across the Internet, CME Direct is a highly-configurable trading front end for CME Group markets that offers a complete suite of solutions across the trading lifecycle.

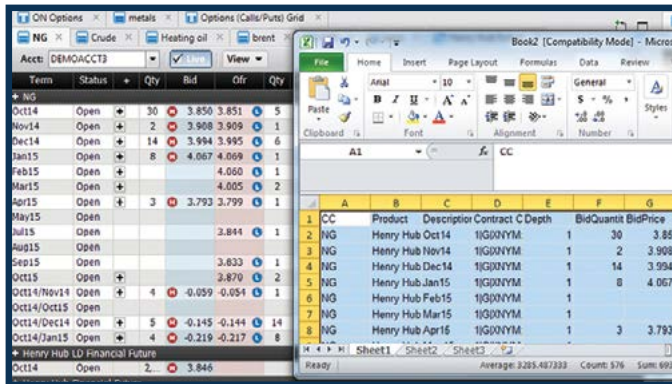
- Real-time streaming quotes, including market depth
- Rapid order entry and trading across multiple brokers and accounts
- Multiple order types, order duration and order protection functions
- Straight through processing (STP) to your risk system for both listed and OTC-brokered trades
- Streamlined, integrated instant messaging with CME Pivot
- Fully integrated QuikStrike Options Analytics tool



# CME Direct offers robust options functionality, real-time excel integration and access to the QuikStrike Options Pricing and Analytics Tool.



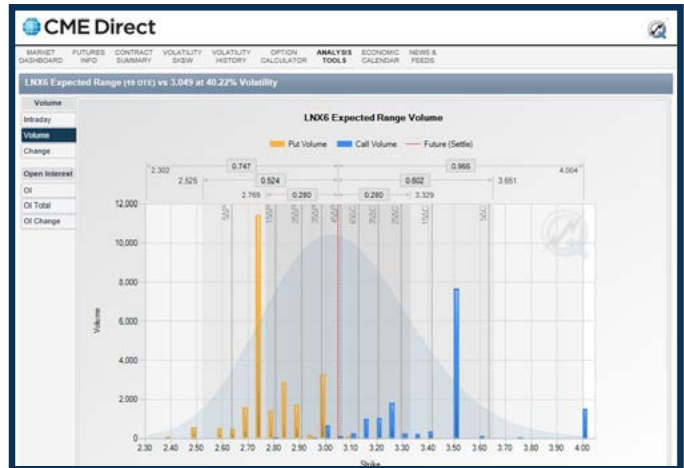
Send Request for Quotes (RFQs) and execute covered and multi-leg options strategies on CME Globex.



Real-time integration between CME Direct and Excel

| Time     | Category    | CC | Product                  | Term    | Quantity | Strike | Price  | Instrument Type |
|----------|-------------|----|--------------------------|---------|----------|--------|--------|-----------------|
| 07:09:17 | Natural Gas | NG | Henry Hub Future         | Apr15   | 300      | 3.760  |        | Future          |
| 07:09:17 | Natural Gas | NG | Henry Hub Future         | Jan16   | 300      | 4.208  |        | Future          |
| 06:54:00 | Natural Gas | LN | Henry Hub Eu Fin Option  | Dec14   | 250      | 4.500  | 0.0520 | Option          |
| 07:13:00 | Natural Gas | KD | Henry Hub Daily Option   | 24Sep14 | 50       | 3.775  | 0.0100 | Option          |
| 07:14:00 | Natural Gas | KD | Henry Hub Daily Option   | 24Sep14 | 50       | 3.775  | 0.0100 | Option          |
| 07:19:44 | Natural Gas | LN | Henry Hub Eu Fin Option  | Oct14   | 200      | 3.950  | 0.0090 | Option          |
| 07:20:50 | Natural Gas | LN | Henry Hub Eu Fin Option  | Oct14   | 150      | 3.950  | 0.0090 | Option          |
| 07:21:29 | Natural Gas | LN | Henry Hub Eu Fin Option  | Oct14   | 100      | 3.950  | 0.0090 | Option          |
| 07:22:21 | Natural Gas | LN | Henry Hub Eu Fin Option  | Oct14   | 100      | 3.950  | 0.0090 | Option          |
| 07:20:20 | Natural Gas | HM | Henry Hub Fin Future     | Nov14   | 50       | 3.858  |        | Future          |
| 07:30:26 | Natural Gas | KD | Henry Hub Daily Option   | 24Sep14 | 25       | 3.850  | 0.0100 | Option          |
| 07:31:48 | Natural Gas | LN | Henry Hub Eu Fin Option  | Nov14   | 50       | 3.850  | 0.0150 | Option          |
| 07:31:48 | Natural Gas | LN | Henry Hub Eu Fin Option  | Nov14   | 50       | 3.850  | 0.0150 | Option          |
| 07:32:13 | Natural Gas | LN | Henry Hub Eu Fin Option  | Oct14   | 100      | 3.750  | 0.0240 | Option          |
| 07:32:13 | Natural Gas | HP | Henry Hub Look-Alike...  | Oct14   | 32       | 3.800  |        | Future          |
| 07:36:09 | Natural Gas | HP | Henry Hub Look-Alike...  | Oct14   | 6        | 3.810  |        | Future          |
| 07:36:09 | Natural Gas | LN | Henry Hub Eu Fin Option  | Oct14   | 100      | 3.950  | 0.0080 | Option          |
| 07:36:09 | Natural Gas | LN | Henry Hub Eu Fin Option  | Oct14   | 100      | 4.000  | 0.0030 | Option          |
| 07:37:50 | Natural Gas | HP | Henry Hub Look-Alike...  | Oct14   | 12       | 3.810  |        | Future          |
| 07:37:50 | Natural Gas | LN | Henry Hub Eu Fin Option  | Oct14   | 200      | 3.950  | 0.0080 | Option          |
| 07:37:50 | Natural Gas | LN | Henry Hub Eu Fin Option  | Oct14   | 200      | 4.000  | 0.0030 | Option          |
| 07:34:58 | Natural Gas | LN | Henry Hub Eu Fin Option  | Nov14   | 150      | 4.500  | 0.0120 | Option          |
| 07:34:58 | Natural Gas | NP | Henry Hub Pen Fin Fut... | Nov14   | 42       | 3.8600 |        | Future          |
| 07:39:17 | Natural Gas | HP | Henry Hub Look-Alike...  | Oct14   | 12       | 3.810  |        | Future          |
| 07:39:17 | Natural Gas | LN | Henry Hub Eu Fin Option  | Oct14   | 200      | 4.000  | 0.0030 | Option          |
| 07:39:17 | Natural Gas | LN | Henry Hub Eu Fin Option  | Oct14   | 200      | 3.950  | 0.0080 | Option          |
| 07:40:58 | Natural Gas | KD | Henry Hub Daily Option   | 24Sep14 | 50       | 3.800  | 0.0200 | Option          |
| 07:40:58 | Natural Gas | KD | Henry Hub Daily Option   | 24Sep14 | 50       | 3.800  | 0.0200 | Option          |
| 07:39:31 | Natural Gas | KD | Henry Hub Daily Option   | 24Sep14 | 50       | 3.800  | 0.0200 | Option          |
| 07:39:31 | Natural Gas | KD | Henry Hub Daily Option   | 24Sep14 | 50       | 3.800  | 0.0200 | Option          |
| 07:40:35 | Natural Gas | KD | Henry Hub Daily Option   | 24Sep14 | 100      | 3.800  | 0.0150 | Option          |

A customizable block data feed displays block trades in real-time



Easily access the fully integrated QuikStrike Options Pricing and Analytics Tool.

Learn more at [cmegroup.com/direct](http://cmegroup.com/direct). For product questions or to schedule a demo, contact [markettechsales@cmegroup.com](mailto:markettechsales@cmegroup.com).

CME Group® is a registered trademark of Chicago Mercantile Exchange Inc. The Globe logo, CME, Chicago Mercantile Exchange, Globex, CME Direct and CME Pivot are trademarks of Chicago Mercantile Exchange Inc. Chicago Board of Trade is a trademark of the Board of Trade of the City of Chicago, Inc. NYMEX is a trademark of the New York Mercantile Exchange, Inc.

Futures trading is not suitable for all investors, and involves the risk of loss. Futures are a leveraged investment, and because only a percentage of a contract's value is required to trade, it is possible to lose more than the amount of money deposited for a futures position. Therefore, traders should only use funds that they can afford to lose without affecting their lifestyles. And only a portion of those funds should be devoted to any one trade because they cannot expect to profit on every trade. All examples in this brochure are hypothetical situations, used for explanation purposes only, and should not be considered investment advice or the results of actual market experience.

The information within this brochure has been compiled by CME Group for general purposes only and has not taken into account the specific situations of any recipients of this brochure. CME Group assumes no responsibility for any errors or omissions. Additionally, all examples in this brochure are hypothetical situations, used for explanation purposes only, and should not be considered investment advice or the results of actual market experience. All matters pertaining to rules and specifications herein are made subject to and are superseded by official CME, NYMEX and CBOT rules. Current CME/CBOT/NYMEX rules should be consulted in all cases before taking any action.