



CME DIRECT FOR THE BROKER

Access electronic futures, options and privately-negotiated block markets – all on one screen.

Faster, easier and more compliant, CME Direct's solutions help you manage activities across the trade lifecycle. Enjoy pre-trade price discovery, negotiation and submission from M, along with straight-through-processing and immediate post-trade confirmations. View markets on one screen to execute on a customer's behalf or use CME Direct to instantly process voice-negotiated block trades.

Enhanced Booking and Block Trade Features

CME Direct offers integrated deal capture for blocks and complex strategies with streamlined deal tickets optimized for recently used customer accounts and trades.

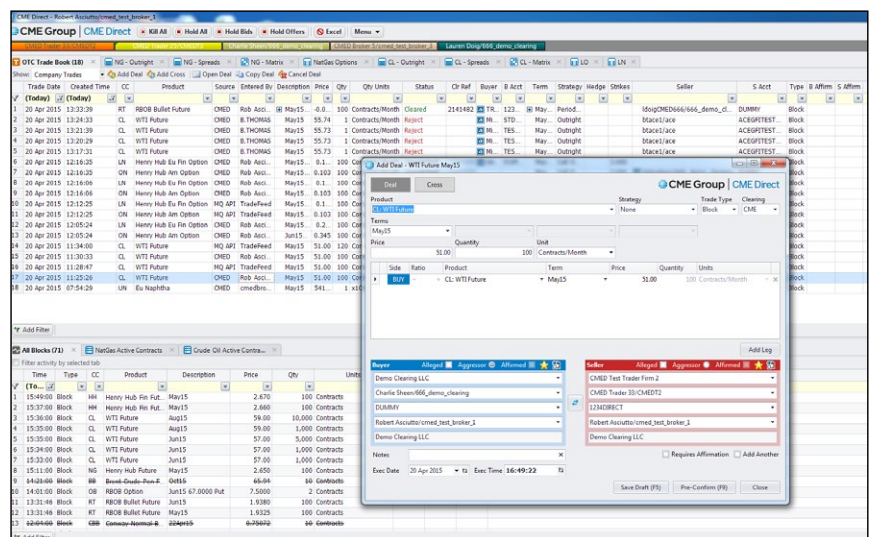
Fast booking: Instantly submit block trades or exchange for swaps (EFS) within the required reporting window

Pre-confirmation window: View pre-confirmation for trade entry, including CME ClearPort validation checks

Real-time block ticker: View customizable block data feeds displaying all block trades in real time

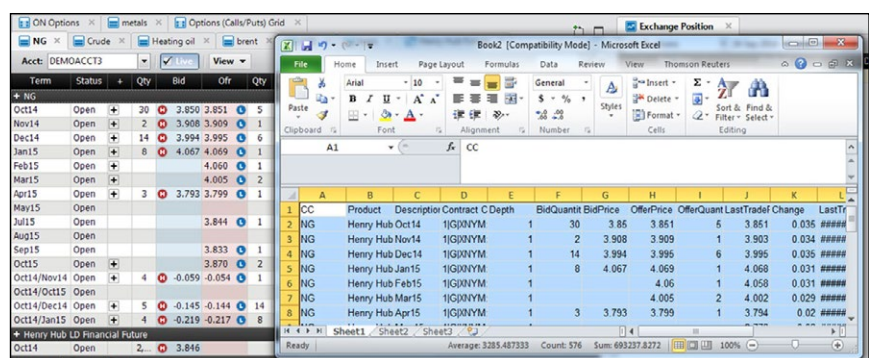
Broker whiteboard for price sharing: Track and share customer prices and interest across the broking desk

API integration: interface with CME Direct to book trades into in-house systems



Excel Integration

A real-time integration between CME Direct and Excel enables live, streaming prices to instantly populate cells within spreadsheets.



Intelligent, reliable and accessible instant messaging with CME Direct Messenger

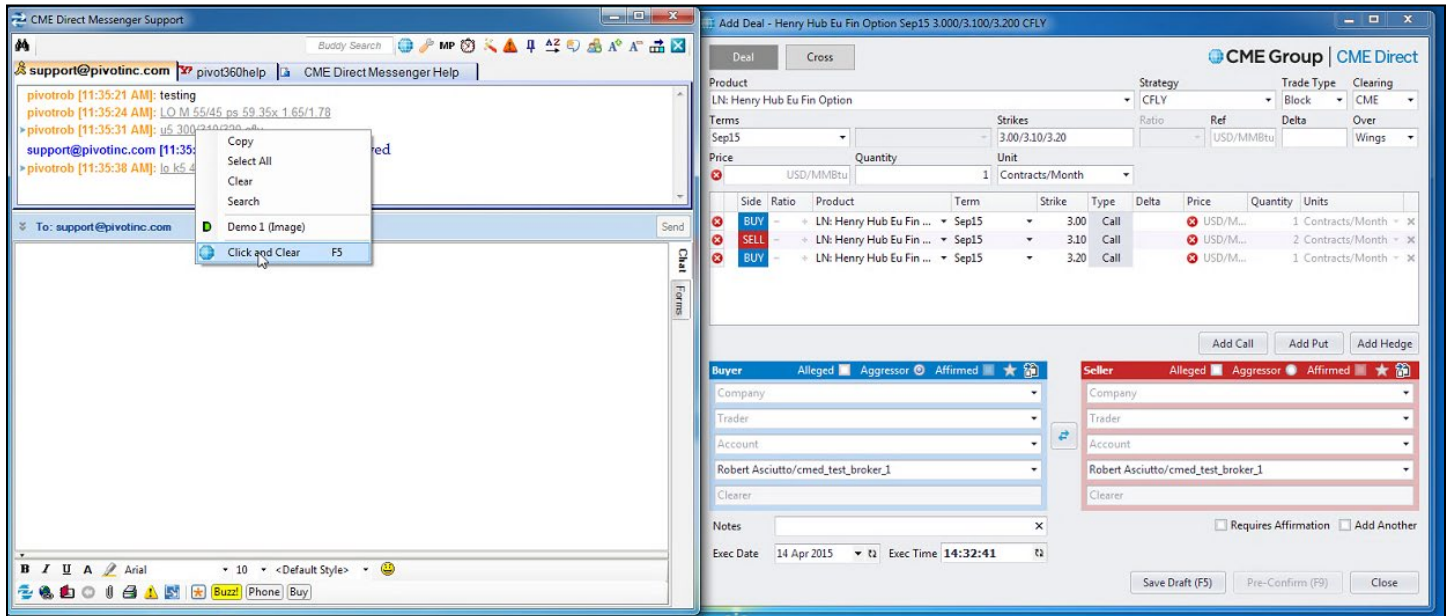
By combining intelligent parsing technology, a highly-collaborative environment, a secure network and an integration with CME Direct, CME Direct Messenger helps brokers and traders better capture market opportunities.

Click and Clear: Book and clear complex block trades straight from an IM

IM Blast: Instantly message multiple customers and parse messages in real time to organize conversations

Strategy converter: Consolidate multiple options and futures legs into one ticket

Embedded options valuation: Parse and price options strategies and risk runs directly from the text of an IM



Learn more at cmegroup.com/direct

For product questions or to schedule a demo, contact cmedirectsales@cmegroup.com.

CME Group® is a registered trademark of Chicago Mercantile Exchange Inc. The Globe logo, CME, Chicago Mercantile Exchange, Globex, CME Direct and CME Direct Messenger are trademarks of Chicago Mercantile Exchange Inc. Chicago Board of Trade is a trademark of the Board of Trade of the City of Chicago, Inc. NYMEX is a trademark of the New York Mercantile Exchange, Inc.

Futures trading is not suitable for all investors, and involves the risk of loss. Futures are a leveraged investment, and because only a percentage of a contract's value is required to trade, it is possible to lose more than the amount of money deposited for a futures position. Therefore, traders should only use funds that they can afford to lose without affecting their lifestyles. And only a portion of those funds should be devoted to any one trade because they cannot expect to profit on every trade. All examples in this brochure are hypothetical situations, used for explanation purposes only, and should not be considered investment advice or the results of actual market experience.

The information within this brochure has been compiled by CME Group for general purposes only and has not taken into account the specific situations of any recipients of this brochure. CME Group assumes no responsibility for any errors or omissions. Additionally, all examples in this brochure are hypothetical situations, used for explanation purposes only, and should not be considered investment advice or the results of actual market experience. All matters pertaining to rules and specifications herein are made subject to and are superseded by official CME, NYMEX and CBOT rules. Current CME/CBOT/NYMEX rules should be consulted in all cases before taking any action.