

The Hightower Report

HightowerReport.com | @HightowerReport

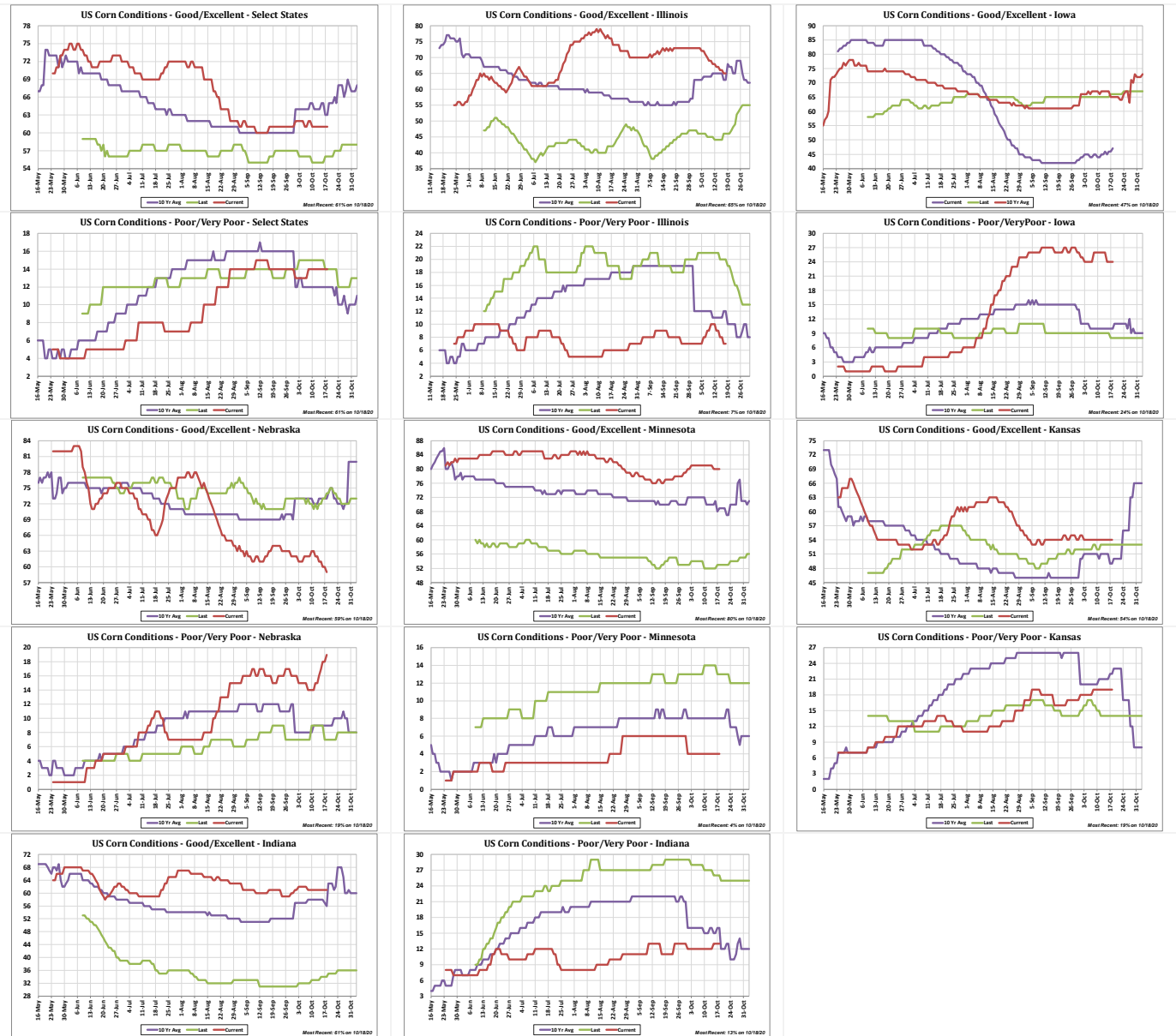


Crop Progress – Corn Conditions

Monday, October 19, 2020

Corn Crop Conditions									
GoodExcellent	10/18	10/11	Change	Last Yr	10 Yr	High (Year)	Low(Year)	Yield Last	Area
Select States	61%	61%	0%	56%	63%	79% (1992)	46% (1993)	168.0	92.006
Iowa	47%	44%	+3%	66%	65%	92% (1992)	11% (1993)	198.0	14.000
Illinois	65%	68%	-3%	46%	63%	94% (1992)	45% (2011)	181.0	10.900
Nebraska	59%	63%	-4%	74%	73%	82% (2009)	51% (2003)	182.0	9.800
Minnesota	80%	81%	-1%	53%	69%	89% (2015)	4% (1993)	174.0	8.100
Kansas	54%	54%	0%	53%	49%	84% (1992)	21% (2003)	133.0	6.100
Indiana	61%	61%	0%	34%	56%	86% (1993)	34% (2019)	169.0	5.400
South Dakota	79%	78%	+1%	65%	66%	80% (2009)	31% (1993)	145.0	5.400
Wisconsin	77%	79%	-2%	63%	68%	79% (2015)	32% (2003)	168.0	4.000
Ohio	49%	48%	+1%	35%	64%	82% (2018)	32% (2008)	164.0	3.600
Missouri	78%	78%	0%	45%	50%	89% (1992)	20% (1993)	155.0	3.500
North Dakota	59%	58%	+1%	61%	62%	75% (2014)	36% (2006)	141.0	2.400
Texas	42%	42%	0%	52%	50%	85% (2004)	10% (2011)	133.0	2.400
Michigan	57%	52%	+5%	42%	61%	75% (1993)	42% (2019)	149.0	2.300
Colorado	24%	28%	-4%	64%	65%	81% (2017)	45% (2013)	123.0	1.600
Kentucky	90%	90%	0%	65%	75%	97% (1992)	38% (1993)	169.0	1.550
Pennsylvania	35%	30%	+5%	71%	75%	90% (2017)	51% (2011)	153.0	1.470
North Carolina	52%	52%	0%	41%	50%	79% (2006)	5% (1993)	111.0	1.020
Tennessee	74%	72%	+2%	83%	81%	90% (2013)	48% (2008)	177.0	0.950
PoorVeryPoor	10/18	10/11	Change	Last Yr	10 Yr	High (Year)	Low(Year)	Yield Last	Area
Select States	14%	14%	0%	14%	12%	19% (2011)	4% (1992)	168.0	92.006
Iowa	24%	26%	-2%	8%	10%	31% (1993)	0% (1992)	198.0	14.000
Illinois	7%	10%	-3%	20%	12%	20% (2019)	0% (1992)	181.0	10.900
Nebraska	19%	14%	+5%	7%	9%	27% (2003)	6% (2015)	182.0	9.800
Minnesota	4%	4%	0%	13%	8%	65% (1993)	2% (2015)	174.0	8.100
Kansas	19%	19%	0%	14%	22%	48% (2011)	0% (1993)	133.0	6.100
Indiana	13%	12%	+1%	26%	16%	26% (2019)	0% (1993)	169.0	5.400
South Dakota	6%	6%	0%	8%	11%	44% (2006)	3% (2015)	145.0	5.400
Wisconsin	6%	6%	0%	13%	12%	29% (2003)	5% (2015)	168.0	4.000
Ohio	15%	14%	+1%	26%	11%	31% (2008)	3% (2018)	164.0	3.600
Missouri	6%	6%	0%	22%	22%	47% (2003)	0% (1992)	155.0	3.500
North Dakota	10%	12%	-2%	10%	12%	28% (2004)	7% (2014)	141.0	2.400
Texas	19%	19%	0%	10%	21%	68% (2011)	0% (1993)	133.0	2.400
Michigan	11%	13%	-2%	20%	12%	21% (2008)	4% (2006)	149.0	2.300
Colorado	48%	40%	+8%	9%	10%	25% (2013)	3% (2015)	123.0	1.600
Kentucky	2%	2%	0%	11%	8%	15% (2014)	0% (1993)	169.0	1.550
Pennsylvania	25%	27%	-2%	7%	7%	18% (2011)	1% (2017)	153.0	1.470
North Carolina	16%	16%	0%	30%	24%	57% (1993)	0% (1992)	111.0	1.020
Tennessee	4%	4%	0%	3%	4%	18% (2008)	1% (2013)	177.0	0.950

This report includes information from sources believed to be reliable and accurate as of the date of this publication, but no independent verification has been made and we do not guarantee its accuracy or completeness. Opinions expressed are subject to change without notice. Any information or recommendation contained herein: (i) is not based on, or tailored to, the commodity interest or cash market positions or other circumstances or characterizations of particular investors or traders; (ii) is not customized or personalized for any such investor or trader; and (iii) does not take into consideration, among other things, risk tolerance, net worth, or available risk capital. Any use or reliance upon the information or recommendations is at the sole discretion and election of the subscriber. The risk of loss in trading futures contracts or commodity options can be substantial, and traders should carefully consider the inherent risks of such trading in light of their financial condition. Any reproduction or retransmission of this report without the express written consent of The Hightower Report is strictly prohibited.



This report includes information from sources believed to be reliable and accurate as of the date of this publication, but no independent verification has been made and we do not guarantee its accuracy or completeness. Opinions expressed are subject to change without notice. Any information or recommendation contained herein: (i) is not based on, or tailored to, the commodity interest or cash market positions or other circumstances or characterizations of particular investors or traders; (ii) is not customized or personalized for any such investor or trader; and (iii) does not take into consideration, among other things, risk tolerance, net worth, or available risk capital. Any use or reliance upon the information or recommendations is at the sole discretion and election of the subscriber. The risk of loss in trading futures contracts or commodity options can be substantial, and traders should carefully consider the inherent risks of such trading in light of their financial condition. Any reproduction or retransmission of this report without the express written consent of The Hightower Report is strictly prohibited.