

# FX Market Profile User Guide

1 Feb 2022

### Quant Analytics Disclaimer

All information contained herein ("Information") is for informational purposes only and is the intellectual property of CME Group Inc. or one of its subsidiaries (together, "CME"), or third parties. Access to the Information by anyone other than the intended recipient is unauthorised and any disclosure, copying or redistribution is prohibited without CME's prior written approval. Spot FX and spot metals data are derived from EBS Service Company Limited and the FX futures data is derived from CME Inc. The data and output from this tool does not constitute investment advice and is not a personal recommendation from CME Group. Nothing contained herein constitutes the solicitation of the purchase or sale of any futures or options. Any investment activities undertaken using this tool will be at the sole risk of the relevant investor. CME Group expressly disclaims all liability for the use or interpretation (whether by visitor or by others) of information contained herein. In no circumstances will CME be liable for any indirect or direct loss, or consequential loss or damages including without limitation, loss of business or profits arising from the use of, any inability to use, or any inaccuracy in the Information. Decisions based on this information are the sole responsibility of the relevant investor. Any visitor to this page agrees to hold the CME Group and its affiliates and licensors harmless against any claims for damages arising from any decisions that the visitor makes based on such information. Certain of CME's affiliates are authorised and regulated by regulatory authorities. CME subsidiaries are required to retain records of telephone conversations and other electronic communications for a period of 5 to 7 years where required by certain regulation, copies of which are available on request (which may be subject to a fee). For further regulatory information please see [www.cmegroup.com](http://www.cmegroup.com).

For details of how we process personal data, please see our updated privacy policy.

Copyright © 2024 CME Group. All rights reserved.

---

# Table of Contents

---

<b>Getting Started</b> .....	<b>4</b>
Exporting the Data .....	4
What's New .....	4
<b>Types of Analysis</b> .....	<b>5</b>
<b>Available Data</b> .....	<b>7</b>
Cash Futures and FX Link Analysis .....	7
Types of Analysis .....	8
Historical Analysis .....	9
Types of Analysis .....	10

# Getting Started

The FX Market Profile dashboard, powered by Quant Analytics, allows traders to compare and contrast CME FX products on a side-by-side basis to improve context and decision making.

The tool toolbar allows you to configure the dashboard to display the information you are interested in.



The screenshot shows a dark-themed toolbar with four main sections:   
1. **Currency**: A dropdown menu currently set to 'EURUSD (6E)'.   
2. **Range**: A dropdown menu set to 'Previous 30 days', with a 'custom range' link and a date range '1 Jan 22 00:00:00.000 | 30 Jan 22 20:00:00.000' displayed below it.   
3. **Order Book Level**: A dropdown menu set to 'x TOB'.   
4. **Granularity**: A dropdown menu set to '30'.

## Currency

The dashboard features 18 FX futures markets and cash equivalents. EUR/USD, USD/JPY, AUD/USD, USD/CAD, GBP/USD, USD/CHF, NZD/USD, USD/CNH, USD/MXN, USD/ZAR, USD/RUB, EUR/JPY, EUR/GBP, EUR/CHF, EUR/NOK, EUR/SEK, USD/NOK and USD/SEK.

## Date Range

You can choose to review over recent calendar months, the last 30 days, or you can enter your own custom date range. You can also choose the intra-day time period that is shown in the dashboard. Note that selecting a different date range via the drop down will update the start and end times.

By default, the tool displays 00 :00 – 20 :00 GMT.

## Order Book Level

In addition to TOB data, you can choose to view spread and order size data for up to ten levels of the orderbook. This allows traders to see how the spreads and order book depth change as multiple levels are selected. There is also a “Futures VWAP” selection which provides a volume weighted bid-ask spread from the FX futures order book for the equivalent volume quoted on EBS Market top of book; this allows you to compare spreads based on like for like order volumes from each market.

## Granularity

The tool enables traders to select the time granularity that they wish to see – from 60 mins down to 5 min intervals.

## Update Frequency

Data is updated on a T+1 day basis – the tool does not provide real time / trade date data, it is providing backward looking data for analysis.

# Exporting the Data

On any of the three panels, to export the data click on the “Data” tab and then on your preferred export format. Excel and CSV are available.

# What's New

The list below illustrates the updates made to the FX Market Profile Help system.

Date	Topic	Description
11/23/21	All	Initial Version

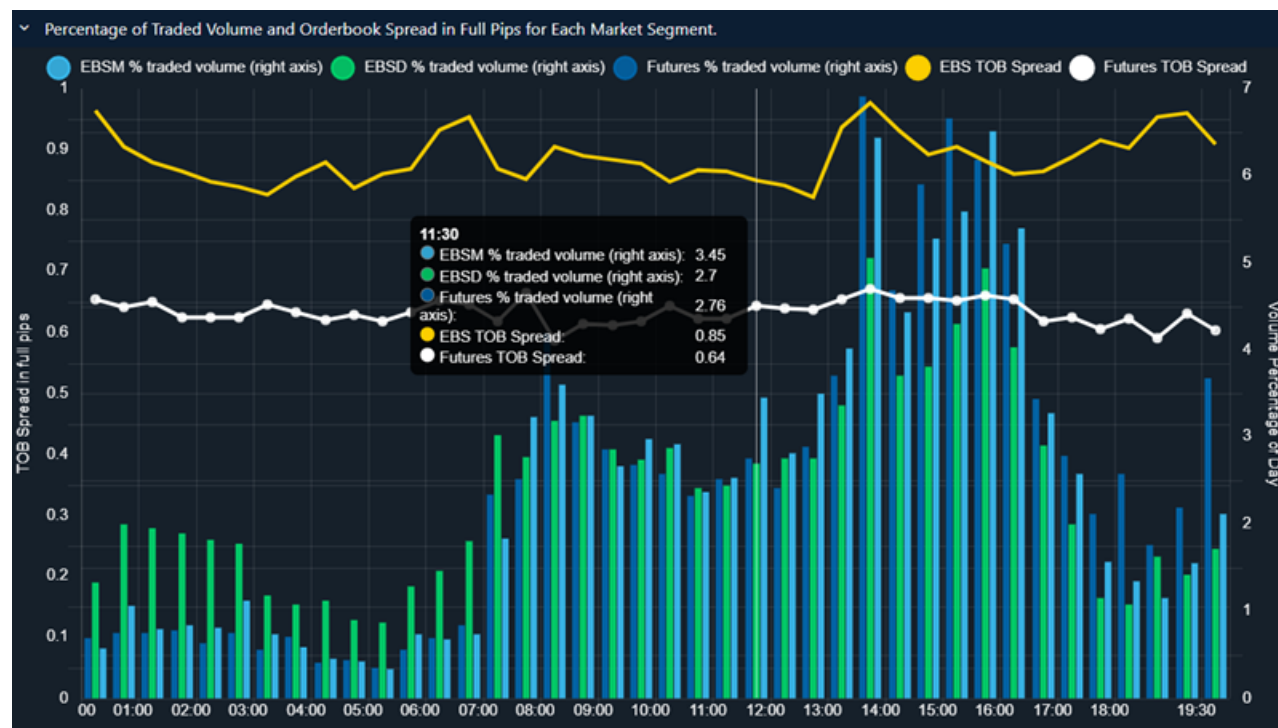
# Types of Analysis

## Percentage of Traded Volume and TOB Spread in Full Pips for each Market Segment

- Plots the traded volume for each of the three markets, FX futures, EBS Market and EBS Direct as a percentage of the hours selected.
- Overlays the bid-ask spread for the selected orderbook levels for EBS Market and futures.

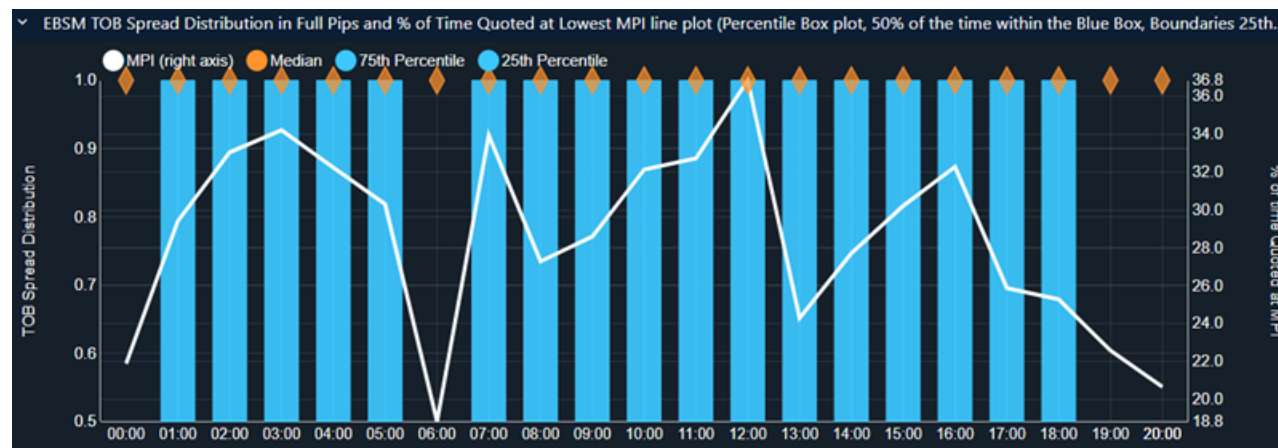


**Note:** EBS Direct TOB spreads are not available as they are bilaterally quoted between counterparties.



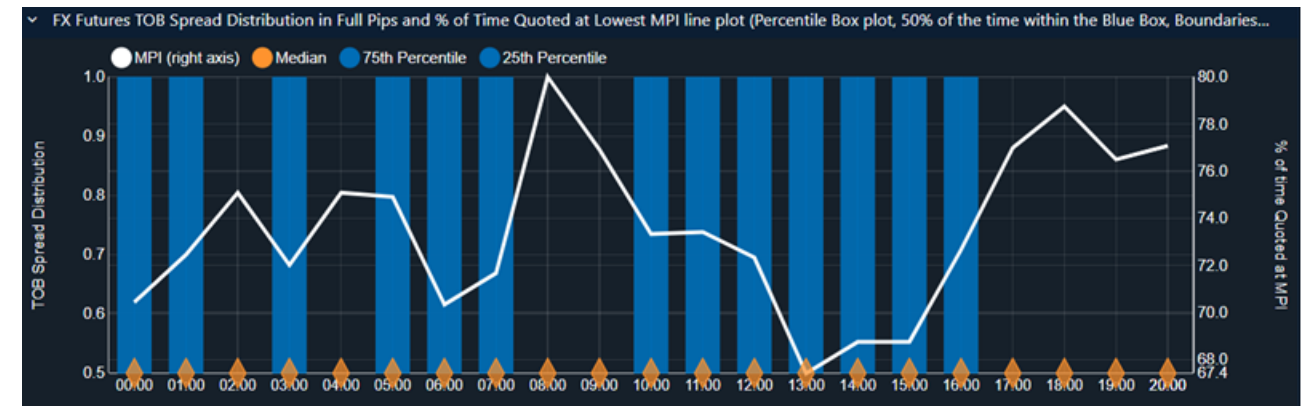
## EBSM TOB Spread Distribution in Full Pips

A box-whiskers (percentile) plot that buckets TOB EBS Market spreads into an hourly statistical plot. The median spread is shown in orange. The blue box highlights the range observed 50% of the time between the 25th and 75th percentiles.



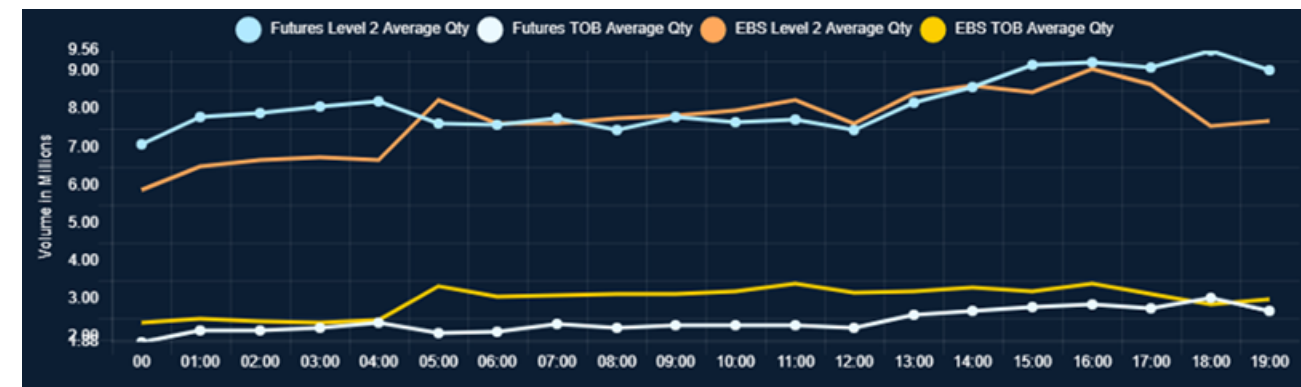
FX Futures TOB Spread Distribution in Full Pips

Similar display to EBSM TOB spread distribution but displaying TOB FX futures spreads.



EBSM and FX futures TOB Volume

A side-by-side comparison of available EBS Market and FX futures orderbook volume for the selected orderbook levels.



Exporting the Data

To export the data click on the “Data” tab and then on your preferred export format. Excel and CSV are available.

# Available Data

The dashboard has three separate panels, showing the following:

- [Cash Futures Analysis](#)
- [FX Link – Futures data](#)
- [Historical Analysis](#)

## Cash Futures and FX Link Analysis

As before, the top toolbar allows you to configure the dashboard to display the information you are interested in.

The screenshot shows a dark-themed toolbar with the following controls:

- Currency:** A dropdown menu currently showing 'AUDUSD (6A)'.
- Range:** A dropdown menu showing 'Previous 30 days' with a 'custom range' link next to it. Below the dropdown, the date range '1 Jan 22 00:00:00.000 | 30 Jan 22 20:00:00.000' is displayed.
- Order Book Level:** A dropdown menu showing 'TOB'.
- Granularity:** A dropdown menu showing '30'.
- Volume Plot:** A dropdown menu showing 'Contracts'.
- Contract:** A dropdown menu showing 'Active Month'.

### Currency

The dashboard features the same 18 currency pairs as the Cash Futures Analysis. FX Link data is available for 8 currency pairs: EUR/USD, USD/JPY, AUD/USD, USD/CAD, GBP/USD, USD/CHF, NZD/USD, and USD/MXN. Where one of the additional ten currency pairs is chosen, outright futures market data is shown only.

### Date Range

You can choose to review over recent calendar months, the last 30 days, or you can enter your own custom date range. You can also choose the intra-day time period that is shown in the dashboard. Note that selecting a different date range via the drop down will update the start and end times.

By default the tool displays 00:00 – 20:00 GMT.

### Order Book Level

In addition to TOB data, you can choose to view spread and order size data for up to ten levels of the orderbook for both Futures and FX Link markets.

### Granularity

The tool enables traders to select the time granularity that they wish to see – from 60 mins down to 5 min intervals.

### Volume Plot

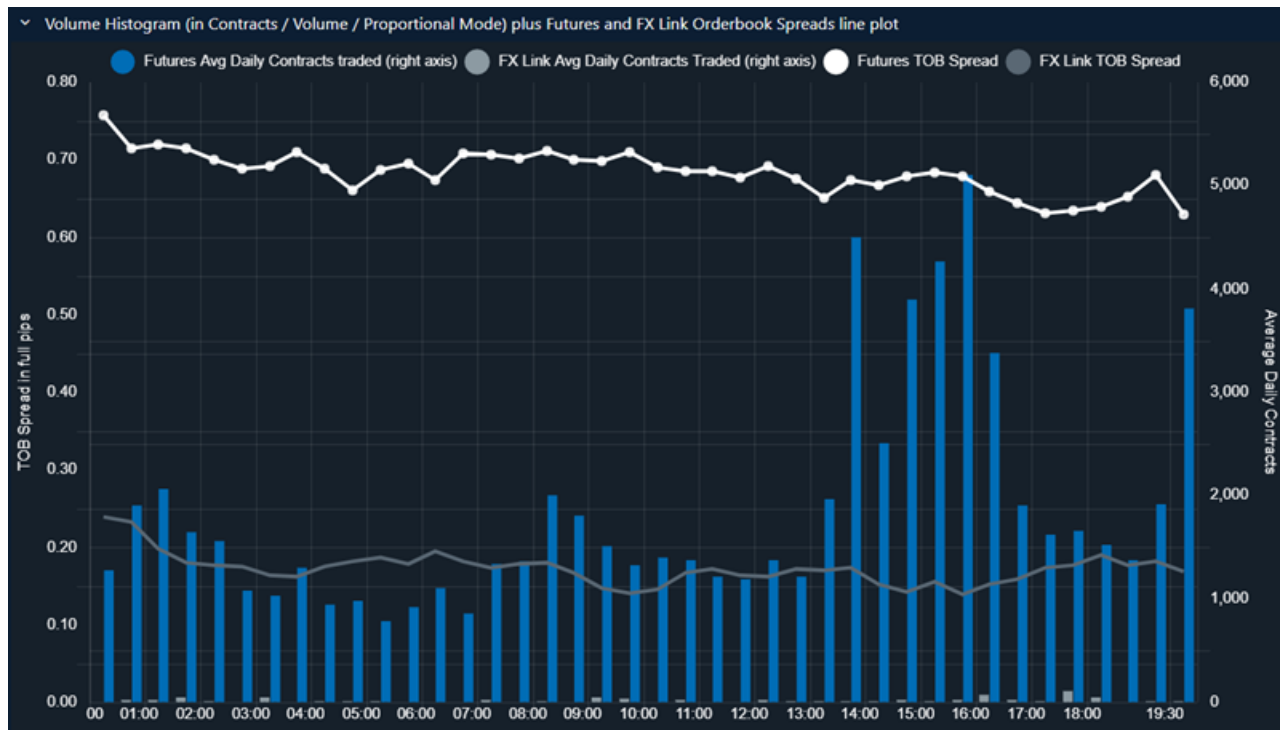
The traded volume chart can be displayed in terms of the number of contracts traded, the US\$ value or the percentage of volume observed in each time period.

### Contract

This allows you to spread and volume data for either the most active contract month (typically the front quarterly contract in the major currency pairs) or all contract months blended together.

## Types of Analysis

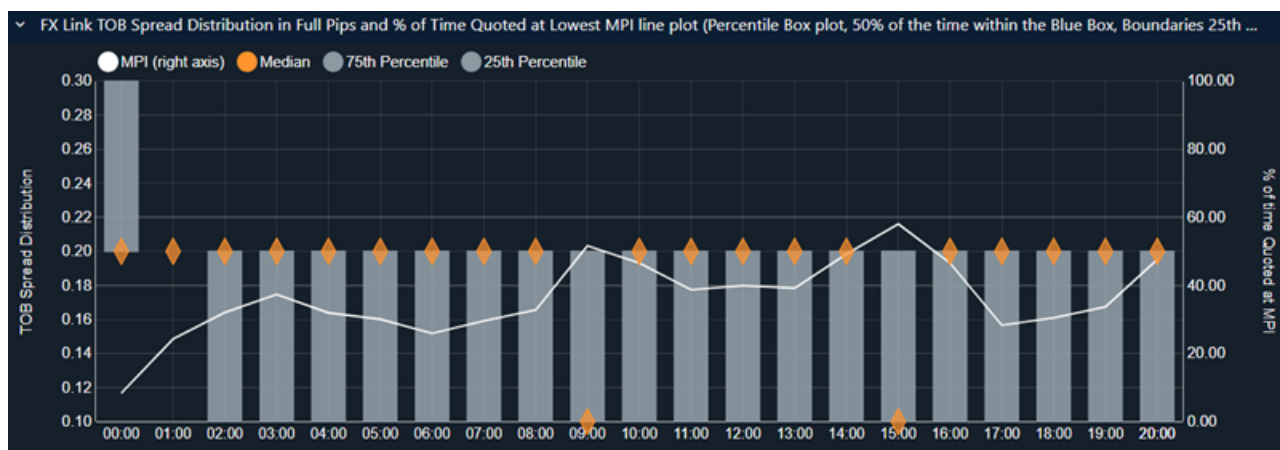
Percentage of traded contracts and volume and orderbook spread in full pips for each market segment



- Plots the traded volume for FX futures and FX Link markets.
- Traded volume is shown in terms of number of contracts traded, the US\$ value traded, or as a percentage of the hours selected.

### FX Link TOB Spread Distribution in Full Pips

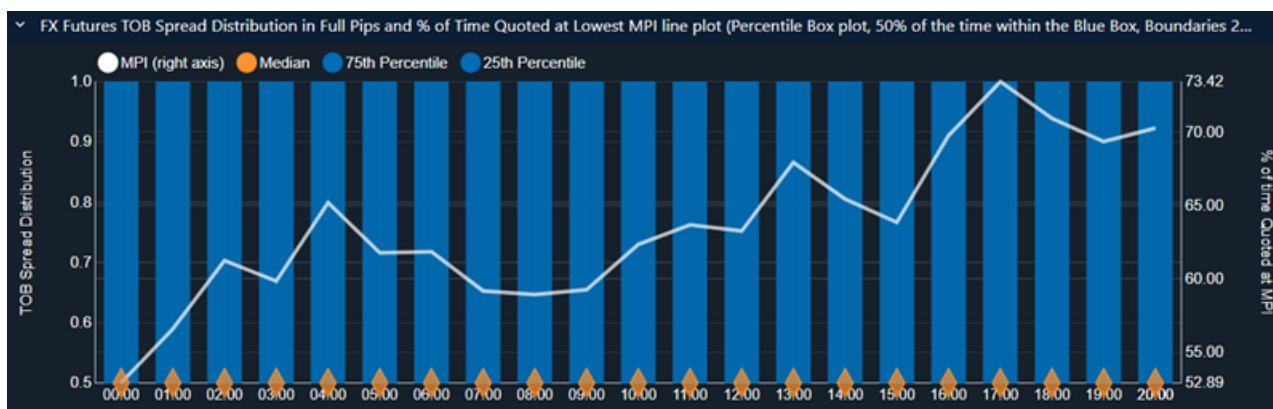
A box-whiskers (percentile) plot that buckets TOB FX Link spreads into an hourly statistical plot. The median spread is shown in orange. The grey box highlights the range observed 50% of the time between the 25th and 75th percentiles.



### FX Futures TOB Spread Distribution in Full Pips

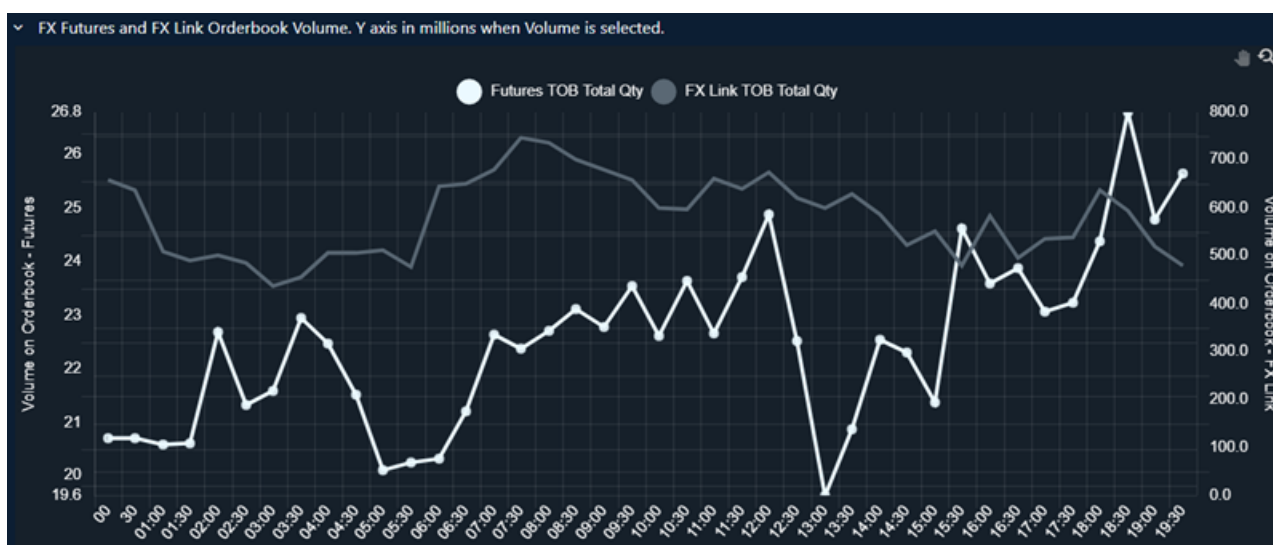
Similar display to FX Link TOB spread distribution but displaying TOB FX futures spreads. This is the same data as shown on the Cash Futures Analysis panel.





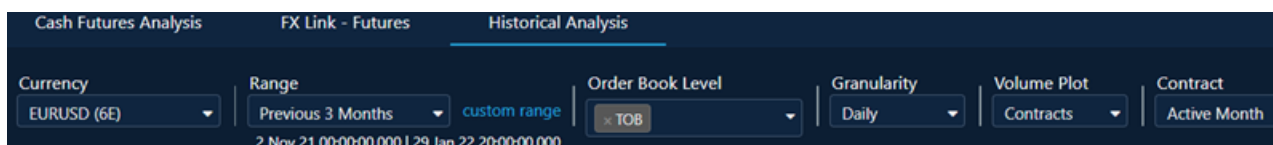
### FX Futures and FX Link Orderbook Volume

A side-by-side comparison of available FX futures and FX Link orderbook volume for the selected orderbook levels.



## Historical Analysis

Again, the top toolbar allows you to configure the dashboard to display the information you are interested in.



### Currency

The dashboard features the same 18 currency pairs as the Cash Futures Analysis and the FX Link – Futures Analysis.

### Date Range

The default setting for the Historical Analysis is the previous six months. You can also choose your own custom date range as well as defining the intra-day time period that is shown in the dashboard. Note that selecting a different date range via the drop down will update the start and end times. By default the tool shows 00 :00 – 20 :00 GMT

### Order Book Level

In addition to TOB data, you can choose to view spread and order size data for up to ten levels of the orderbook, plus the Futures VWAP spread as previously described.

### Granularity

This allows you to choose the desired granularity as daily, weekly or monthly.

### Volume Plot

The traded volume chart for Futures and FX Link can be displayed in terms of the number of contracts traded, the US\$ value or the percentage of volume observed in each time period.

### Contact

This allows you to spread and volume data for either the most active contract month (typically the front quarterly contract in the major currency pairs) or all contract months blended together.

## Types of Analysis

This panel provides the analysis formats seen on the Cash Futures Analysis and Futures – FX Link panels, presented for the chosen granularity.