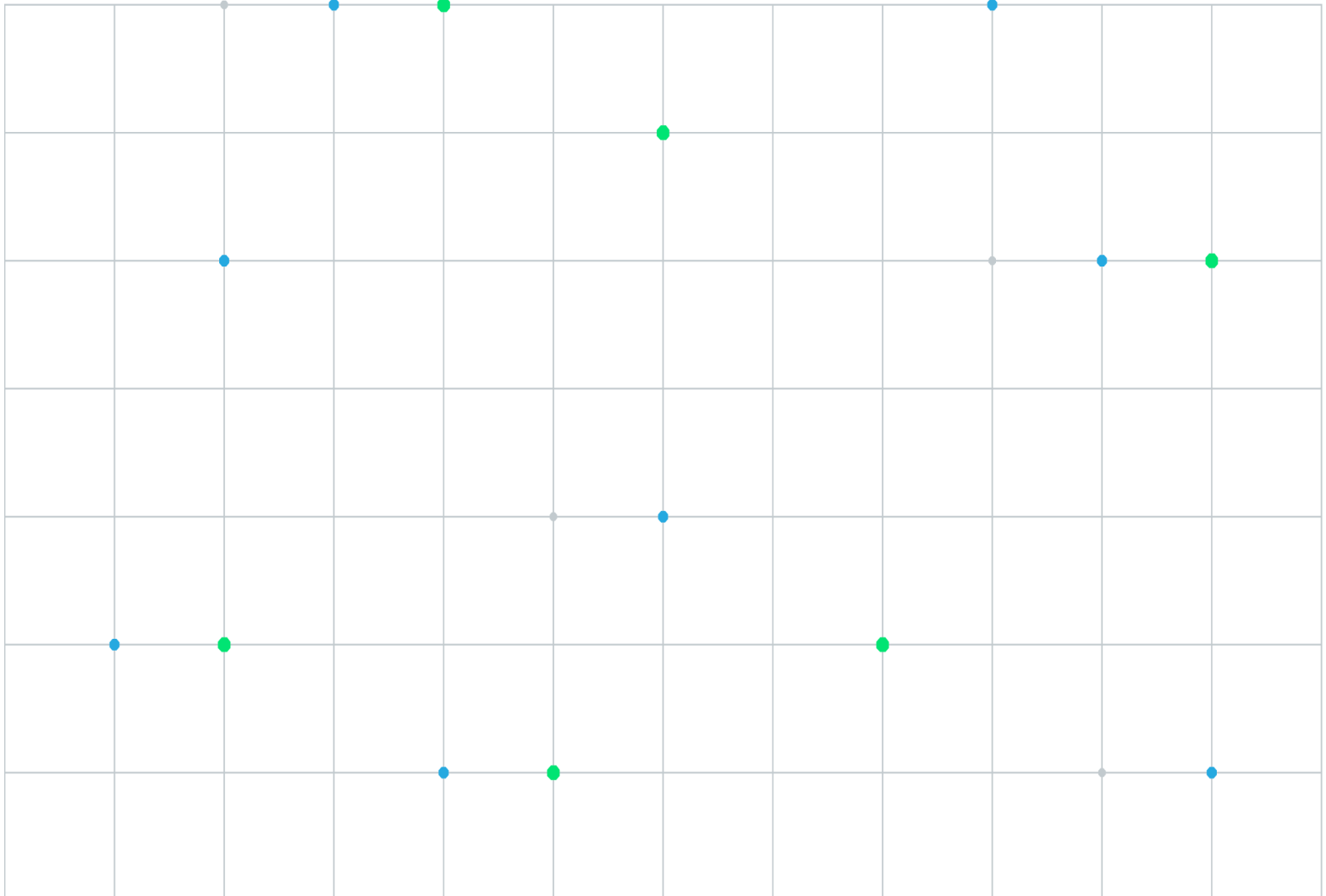


CME Direct Mobile App User Manual

12 April 2026



Disclaimer

Neither futures trading nor swaps trading are suitable for all investors, and each involves the risk of loss. Swaps trading should only be undertaken by investors who are Eligible Contract Participants (ECPs) within the meaning of Section 1a(18) of the Commodity Exchange Act. Futures and swaps each are leveraged investments and, because only a percentage of a contract's value is required to trade, it is possible to lose more than the amount of money deposited for either a futures or swaps position. Therefore, traders should only use funds that they can afford to lose without affecting their lifestyles and only a portion of those funds should be devoted to any one trade because traders cannot expect to profit on every trade. All examples discussed are hypothetical situations, used for explanation purposes only, and should not be considered investment advice or the results of actual market experience.

CME Group, the Globe Logo and CME are trademarks of Chicago Mercantile Exchange Inc. CBOT is a trademark of the Board of Trade of the City of Chicago, Inc. NYMEX is a trademark of New York Mercantile Exchange, Inc. COMEX is a trademark of Commodity Exchange, Inc. All other trademarks are the property of their respective owners.

The information within this manual has been compiled by CME Group for general purposes only. CME Group assumes no responsibility for any errors or omissions. Additionally, all examples in this manual are hypothetical situations, used for explanation purposes only, and should not be considered investment advice or the results of actual market experience. All matters pertaining to rules and specifications herein are made subject to and are superseded by official CME, CBOT and NYMEX rules. Current rules should be consulted in all cases concerning contract specifications.

Copyright © 2026 CME Group Inc. All rights reserved.

Table of Contents

Getting Started	4
CME Group Login Registration	4
Contact Information	4
Login and Logout	4
Selecting an Account	6
Navigation	7
User Settings	7
Font Size	7
CME Direct Tour	8
Accessing Views	8
Market Data	9
Enter Orders	14
Contract Search	16
Options	19
Populating the Options Grid	20
Underlying Future	20
Expiry	21
Options List	22
Options Market Data Grid	24
Update Mid Strike Price	25
Enter an Options Order	25
Orders	27
Modify Order Details	29
Positions	32
More	33
Markets	33
Tools	33
Insights	33
Block Trades	34
QuikStrike	36

Getting Started

Use the CME Direct front-end application from any browser on a mobile device to monitor market data and cancel orders that were previously entered into the market using CME Direct.

CME Group Login Registration

CME Group Login is a self-managed, centralized user profile service that authenticates access to CME Group applications and services, to monitor market data, enter new orders and manage existing orders.

Access the [CME Group Login page](#) to:

- Create a New User profile.
- Find CME Group Login support and troubleshooting Information.

Also, see the online [CME Group Login Help](#).

 **Note:** The Administrator will notify you when your permissions are established.

Contact Information

For questions regarding this and other CME applications, please refer to the [Contact Information](#) directory on CME Group's Client Systems Wiki.

Login and Logout

After you receive permission to access CME Direct mobile app, log in to the system.

▶ To log in:

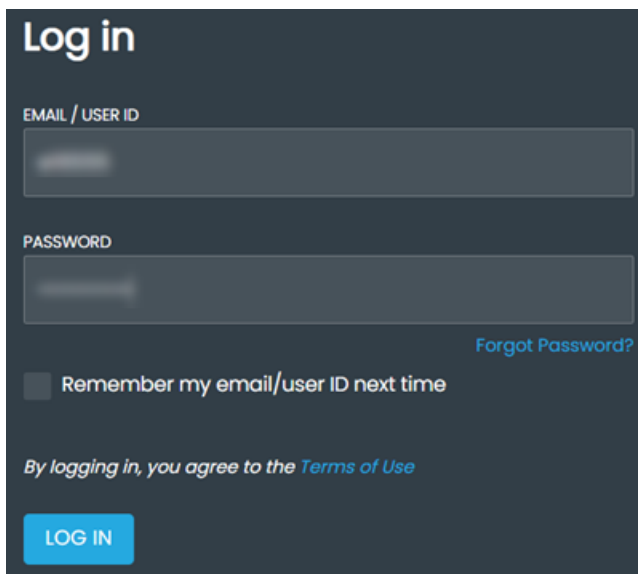
1. Download the **CMED** app



2. Launch the app



3. Enter login credentials and select **LOG IN**.



4. Authenticate using [Duo](#) when prompted.

Note: For additional information about creating or managing a CME Group Login, or using multi-factor authentication, please review the [CME Group Login User Help System](#).

The Home Page displays. The Home page is customizable and opens to the same view as the user's last session.

▶ **To exit CME Direct mobile app:**

1. Tap the **User Settings** button.

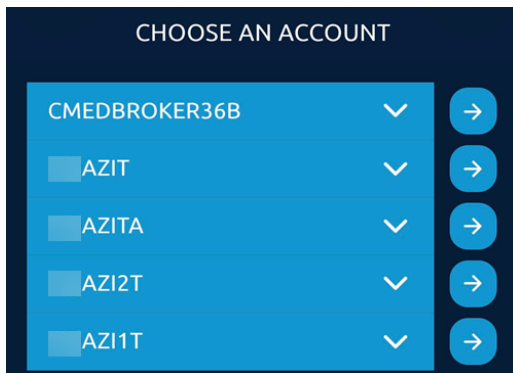


2. Select **Logout** to exit the application.



Selecting an Account

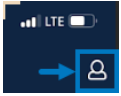
Users with multiple accounts may select a preferred account from the **Choose An Account** screen by tapping the arrow button:



Navigation

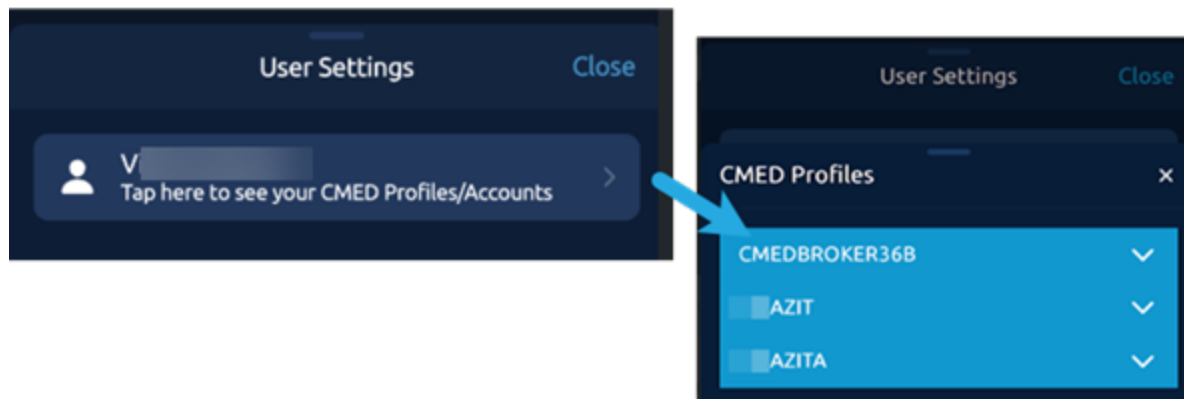
The CME Direct mobile app interface defaults to display **Market** view.

Select the User Setting icon to view CME Direct Profiles/Accounts, select font size, initiate a tour of the application, access Tools and logout of the application.



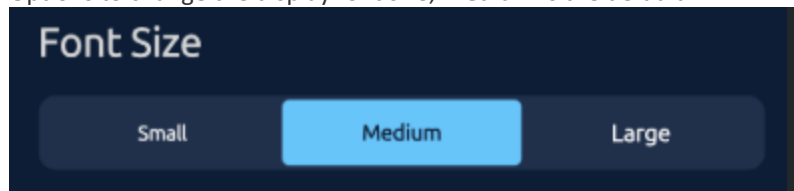
User Settings

Review your access from **CMED Profiles/Accounts**



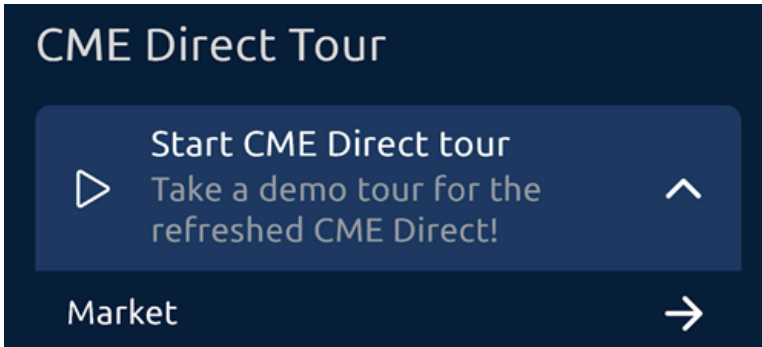
Font Size

Options to change the display font size, **Medium** is the default.

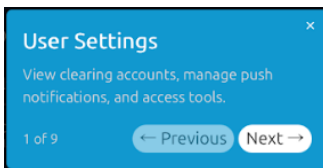


CME Direct Tour

For more information on CME Direct mobile app features, click the drop-down arrow and then tap an item from the list.



From the pop-up window, select **Next** to tour a new feature.

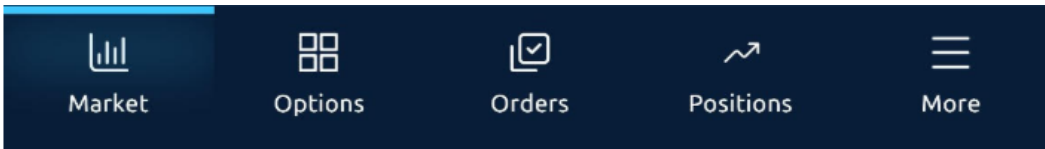


Accessing Views

Views offer specific functions and features: [Market](#), [Options](#), [Orders](#), [Positions](#), and [More](#) ([Block Trades](#), [QuikStrike](#)).

▶ To Access a View:

From the Menu/Toolbar at the bottom of the screen, select a view:



Market Data

Tap the **Market** icon on the toolbar to view market data for a select product group:



▶ To display market data

- In the CME Direct client, on either the **Futures Grid** or **Strategies Grid** right-click a group (e.g. Group WTI Future), and select **Show in Mobile**

right-click anywhere on group header for menu options

CC	Product	Desc...	Status	+	Qty	Bid	Ofr	Qty	Pin	Last	Ch...	Settle...
- Market Summary												
NQ	E-Mini Nasdaq-100 Future	Jun25	Open									
YM	E-mini Dow Jones Industrial Aver...	Jun25	Open									
ES	E-Mini S&P 500 Future	Jun25	Open									
UB	Ultra U.S. Treasury Bond Future	Jun25	Open									
ZB	U.S. Treasury Bond Future	Jun25	Open									
ZN	10-Year U.S. Treasury Note Future	Jun25	Open									

The **Market** view for the product group appears in CME Direct mobile app:

CME Direct			5-Year U.S. Treasury Note Future		WTI Ex-Pipe (
CONTRACT	BID	OFFER				
LAST / CHANGE / VOLUME	QTY	QTY				
CL May26 96.37 +0.11 1,878	96.37 9	96.42 1				
CL Jun26 88.30 -17.22 1,096	88.30 8	88.36 1				
CL Jul26 85.61 -14.49 556	84.23 3	84.34 1				
CL Aug26 82.08 -14.08 366	80.65 2	80.77 2				
CL Sep26 79.55 -13.81 305	78.12 1	78.24 1				
CL Oct26 95.68 +0.09 208	95.68 9	95.77 1	Edit	☰		
CL Dec26 74.15 -19.49 462		74.21 1	Live View	📊		
CL Jan27 73.33 -19.68 60	73.38 1	73.48 1	Add Contracts	+		
				✕		

The **Market** view, which pulls data from the CME Direct client grid, displays the following market and product information:

CONTRACT	BID	OFFER
LAST / CHANGE / VOLUME	QTY	QTY
YM Jun25	41,334	41,336
41,336	1	3
+2,806		
4,551		

1. Product Group

2. Product Code and Expiration

3. Last Traded Price

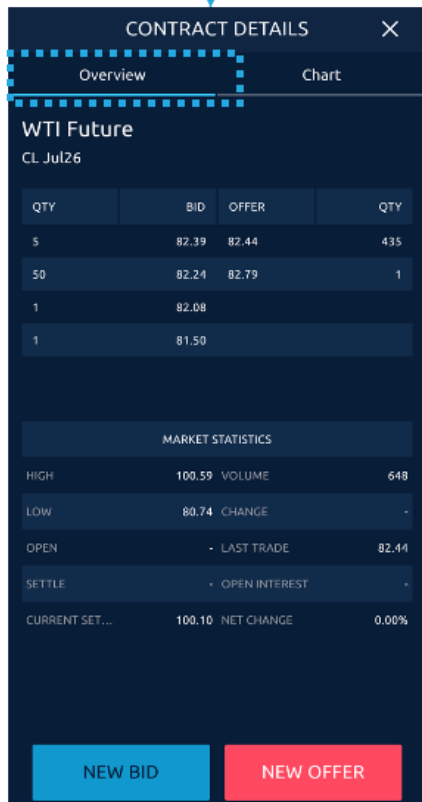
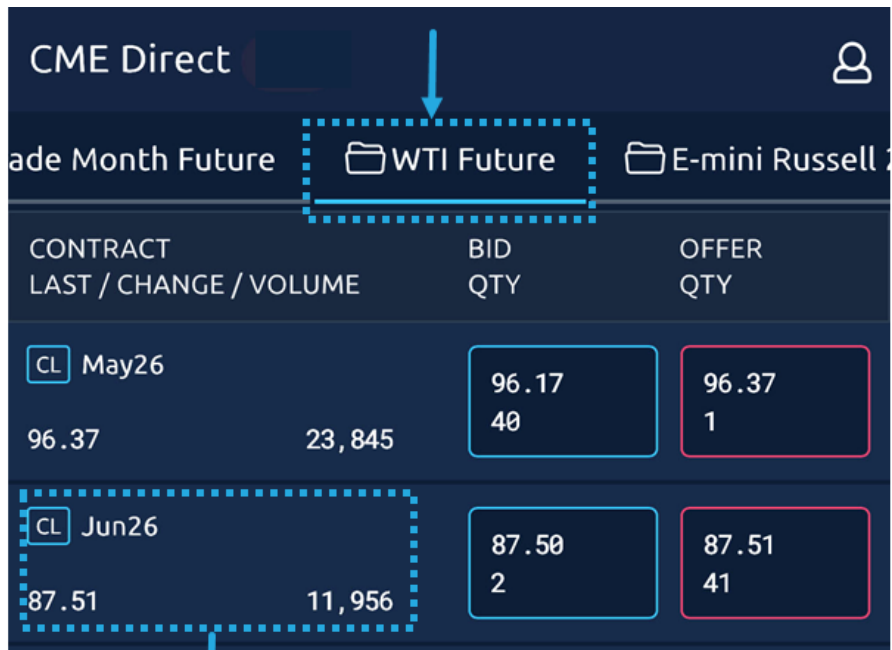
4. The change in trade price from the previous trade. Colors indicate the direction of the market

5. Daily Volume

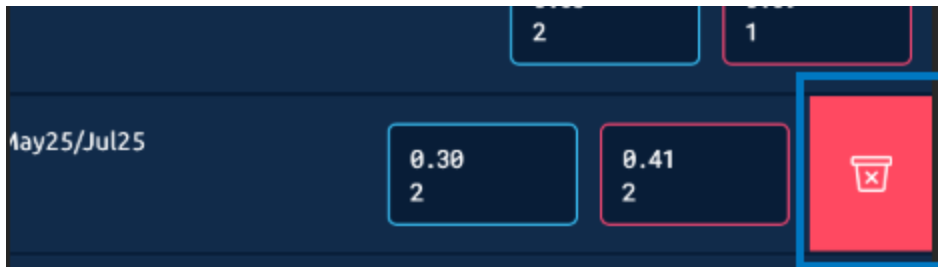
6. Best Bid and Offer prices. Includes the working quantity at that price level.

▶ To display additional market data details:

- Tap a contract to view an **Overview** with real time market statistics, as well as the top 5 levels of market depth in real time and **Chart** of prices, powered by TrendSpider.




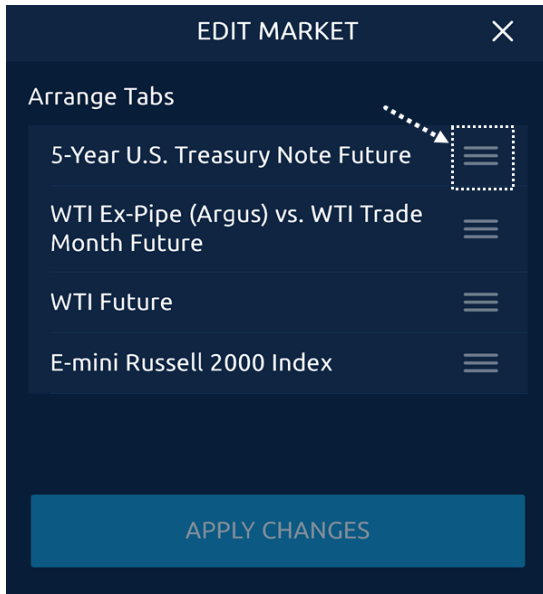
Note: To remove a contract swipe from right to left on the row, tap trash can icon.



Note: Enable **Live** mode to display rows with live prices only.

▶ **To re-order Market view tabs:**

- Tap the  button, **Edit** > drag and drop tab name > **Apply Changes**.



▶ **To display live prices:**

- Tap the  button, then **Live View**.

Enter Orders

Use the **Market** view to open an order entry ticket and submit new orders or aggress an order.

▶ **To enter an order:**

1. To open an order entry ticket, tap in contract **Bid Qty** or **Offer Qty** column.

Default			Market Summary	
CONTRACT			BID QTY	OFFER QTY
YM Jun25			41,334 1	41,336 3
41,336	+2,886	4,551		

The order ticket displays.

ORDER DETAILS ✕

1 2-Year Treasury Future/5-Year Treasury Future Intercommodity Ratio Spread
2 TAF Dec25 3 B

QTY	BID	OFFER	QTY
6	0'002	0'006	37

4

PRICE 5 0'002 +

QUANTITY 6 1 +

DISPLAY QUANTITY 7 TURN ON

8 - +

ORDER TYPE 9 Limit ▾

STOP PRICE 10 - +

TIME IN FORCE 11 Good for day ▾

DATE 12

ACCOUNT 13 ★ CMEDTE ▾

MAKE MY DEFAULT ACCOUNT 14 YES

NOTES 15

16 SWITCH TO OFFER 17 SUBMIT BID

2. Complete or edit the following fields as needed:

Field	Description
1. Contract Name	Name of selected instrument.
2. Contract Code and Term	Code and term for selected instrument.
3. Buy or Sell indicator	B in blue for buy and S in red for Sell
4. Top of Book	Real time data for selected contract
5. Price	Use the + and - buttons to set the price for the order.
6. Quantity	Use the + and - buttons to set the quantity for the order.
7. Display Quantity	Specify quantity shown to market, replenishes the specified quantity when filled, until entire order quantity is filled.

Field	Description
8. Display Quantity value	Use the + and - buttons to set the display quantity.
9. Order Type	Use to select from Limit , Market with Protection , Market-Limit , Stop with Protection , or Stop-Limit .
10. Stop Price	Enabled for Stop-Limit or Stop with Protection
11. Time In Force	Use the Time in Force list to set the order as Good for day , Good til Cancelled , Good til Date , Fill, kill remainder , or Fill or kill .
12. Calendar	Set time in force.
13. Account	Use the list to select an Account for the order.
14. Make My Default Account	Use the toggle to make the selected account the default for all orders.
15. Notes	Field for entering any special comments, instructions, etc.
16. Switch to Bid / Offer	Click to change the ticket to bid (offer).
17. Submit Bid / Offer	Click to submit the bid (offer).

Contract Search

From the **Market** view, users can access options to search and add futures contracts to which they are permitted, re-order how contract tabs display, and enable a live view of prices.



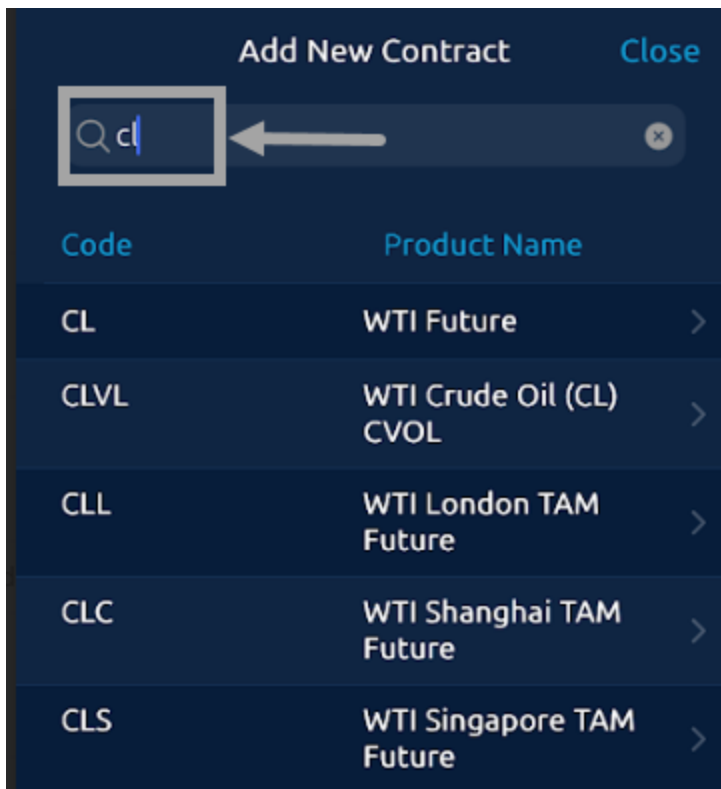
► **To search for a contract:**



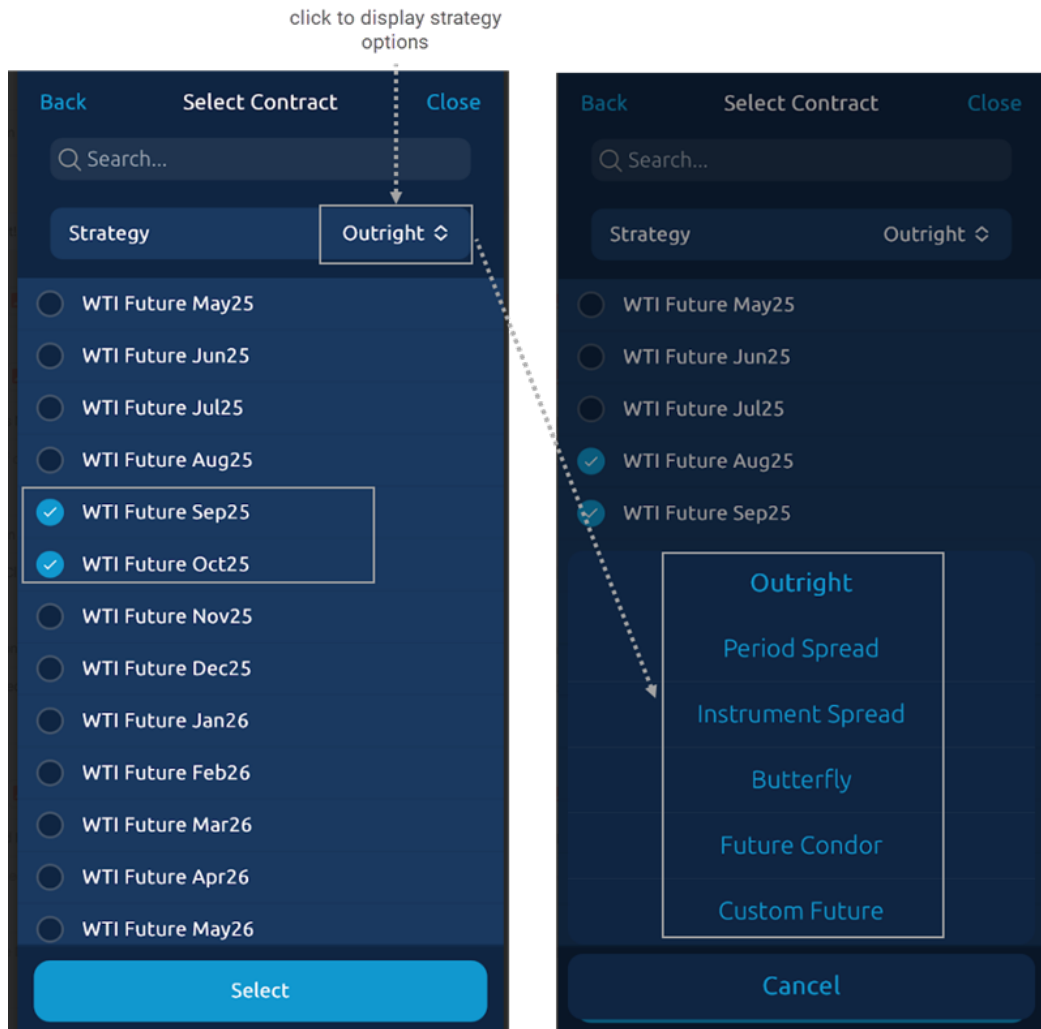
1. Tap the  button within the **Market** view. Then tap **Add Contracts**.



2. Enter a product code or name in the search field, to filter the list.



3. Tap a product from the list to display a **Select Contract** window.



4. Tap a strategy from the list window appears and select contract(s). The Contract is added to the **Market** view.

Note: Contracts will be added to the group currently open in Market view. To organize groups go to the Futures or Strategies grid view of CME Direct client.


CONTRACT LAST / CHANGE / VOLUME	BID QTY	OFFER QTY
HO/CL May25/Aug25	-0.25 2	-0.15 3
HO/CL May25/Jun25	0.63 2	0.69 1

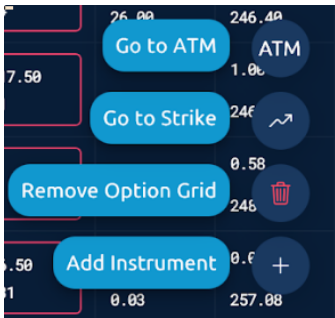
Options

The **Options** grid displays options market data based on the ATM (or Mid Strike price) for the underlying future and expiration you select. Once populated, the grid allows users to view market activity and summary market data, as well as aggress and submit orders displayed in the grid.

STRIKE	BID QTY	OFFER QTY	LAST THEO	DELTA VOL
58.5	3.51 1	4.11 1	4.09	0.85 31.37 %
58.75	3.31 1	3.91 1	3.88	0.84 31.20 %
59	3.10 1	3.70 1	3.67	0.82 31.05 %
59.25	2.91 1	3.51 1	3.47	0.80 30.92 %
59.5	2.99 1	3.04 1	3.27	0.78 30.82 %
59.75	2.79 1	2.85 1	3.08	0.76 30.74 %

Market Options Orders Positions More

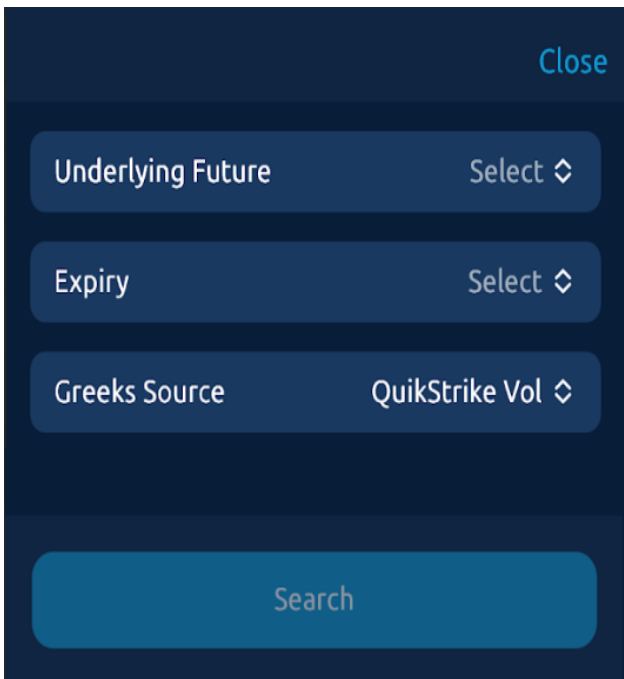
Click the  to display selections:



- **Go to ATM** re-centers the options grid at current at the money strike
- **Go to Strike** re-centers the options grid to a specific strike
- **Remove Option Grid**
- **[Add Instrument](#)**

Populating the Options Grid

The initial filters window that appears when adding an **Options Grid** allows users to select an underlying future, expiration date range, and Greeks display.



Underlying Future

To assign an Underlying Future, tap **Select**, enter a product in the **Search** field, and select an Underlying Future from the list or enter a search term in the box.

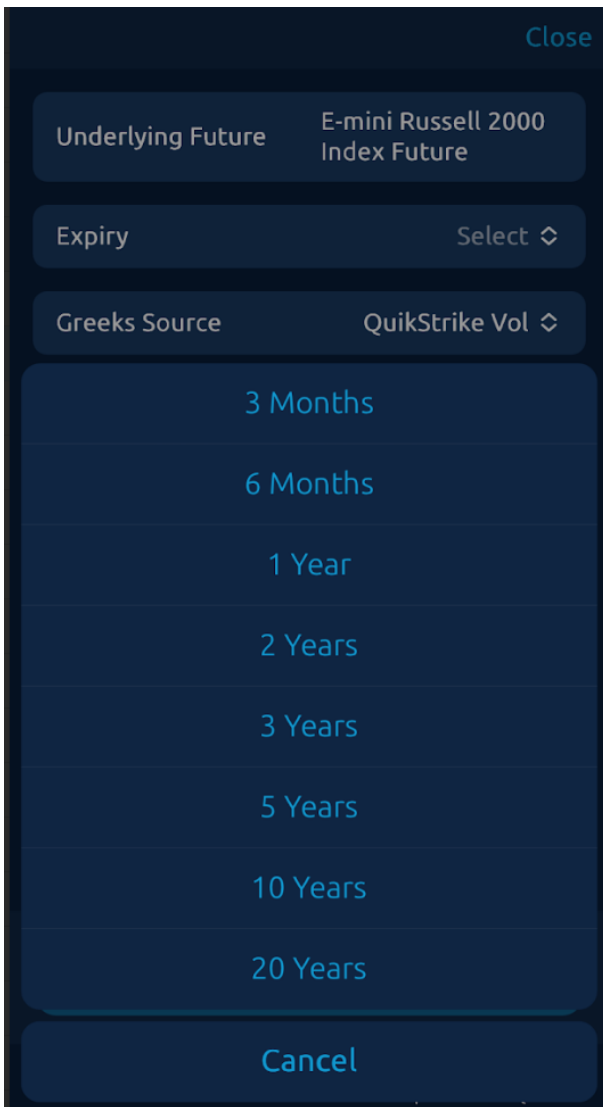


The screenshot shows a dark-themed mobile application interface. At the top right, there is a 'Close' button in light blue. Below it is a search bar with a magnifying glass icon on the left and a close 'x' icon on the right. The main content is a list of seven Treasury futures contracts, each on a dark blue background with white text. Each item consists of a ticker symbol, a description, and a right-pointing chevron icon.

Symbol	Description
ZF	5-Year U.S. Treasury Note Future
ZN	10-Year U.S. Treasury Note Future
ZT	2-Year U.S. Treasury Note Future
TN	Ultra 10-Year U.S. Treasury Note Futures
UB	Ultra U.S. Treasury Bond Future
ZB	U.S. Treasury Bond Future

Expiry

To select an expiration date range choose from the following: 3 Months, 6 Months, 1 Year, 2 Years, 3 Years, 5 Years, 10 Years, 20 Years (or Cancel).



Options List

Once populated, the Options Category displays:

Underlying Future E-mini Russell 2000
Index Future

Expiry 6 Months ↕

Greeks Source QuikStrike Vol ↕

Option Category

- Weekly Tuesday
- EOM
- Monthly
- Weekly
- Weekly Wednesday
- Weekly Thursday
- Weekly Monday

Search

Select **Search** to open the **Options List**. Select an option from the list and define the Mid Strike that will populate the Option Grid's market data display.

Choose whether to center prices At-The-Money (ATM) or at a specified Strike

Filter the Options list. For example, search for WTI AM Options only

Options List
Close

Mid Strike
ATM

Number of Strikes
11

- E-mini Russell 2000 Tue Wk3 Opt Apr25
- E-mini Russell 2000 Tue Wk4 Opt Apr25
- E-mini Russell 2000 EOM Opt Apr25
- E-mini Russell 2000 EOM Opt May25
- E-mini Russell 2000 EOM Opt Jun25
- E-mini Russell 2000 Option Jun25
- E-mini Russell 2000 Option Sep25

Select a row to display that Option in the market data grid

Options Market Data Grid

The **Options Grid** market data displays details pertaining to the underlying future prices, and real-time Options market depth centered around the ATM price or a specified Mid Strike price.

The top pane serves as a point of reference while navigating the market data grid, and identifies the selected Option, while providing details of the underlying Future.

CME Direct Mobile
UT
👤

10-Year U.S. T-Note Mon W2 Opt Apr25
▼

UNDERLYING FUTURE

10-Year U.S. Treasury Note Future Jun25
▲

BID QTY	BID	OFFER	OFFER QTY
1	112' 035	112' 135	130

The lower pane displays live Options market depth for the underlying future prices. By default, 10 strike prices display and center at the ATM price. The market data grid also allows users to center the display around the Mid Strike of their choosing.

Strike Price Data

Select a Strike Price from the **Strike** column in the market data grid to display supplemental strike data, including Bid/Offer Options market depth, Volume, Last, Change, and tick direction.

Update Mid Strike Price

By default, the ATM price serves as the Mid Strike price from which the market data grid is centered. In the Option description pane, select ATM to center prices around a specific strike price.

Update Mid Strike Price

ATM

UPDATE
CLOSE

Enter an Options Order

The **Options Grid** allows users to aggress and enter Options orders from the market data grid and take a position in an Option.

- To launch an order entry window select a price directly from the market data grid

CME Direct 👤

WTI Am Tuesday Week4 Opt Oct25 ▼

UNDERLYING FUTURE

WTI Future Dec25 ▼

CALLS
PUTS

STRIKE	BID QTY	OFFER QTY	LAST THEO	DELTA VOL
58.5	3.51 1	4.11 1	4.09	0.85 31.37 %
58.75	3.31 1	3.91 1	3.88	0.84 31.20 %
59	3.10 1	3.70 1	3.67	0.82 31.05 %

On the order entry window, select an account and submit the Bid/Offer. You may edit the Price, Quantity, and other fields prior to submitting the Bid/Offer.

ORDER DETAILS ×

WTI Am Tuesday Week4 Opt Oct25
58.50 Call S

QTY	BID	OFFER	QTY
1	3.51	4.11	1

PRICE: − 4.11 + QUANTITY: − 1 +

DISPLAY QUANTITY: TURN ON − +

ORDER TYPE: Limit ▼ STOP PRICE: − +

TIME IN FORCE: Good for day ▼ DATE: 📅

ACCOUNT: ★ CMEDT1CSET ▼ MAKE MY DEFAULT ACCOUNT: YES

NOTES:

SWITCH TO BID SUBMIT OFFER

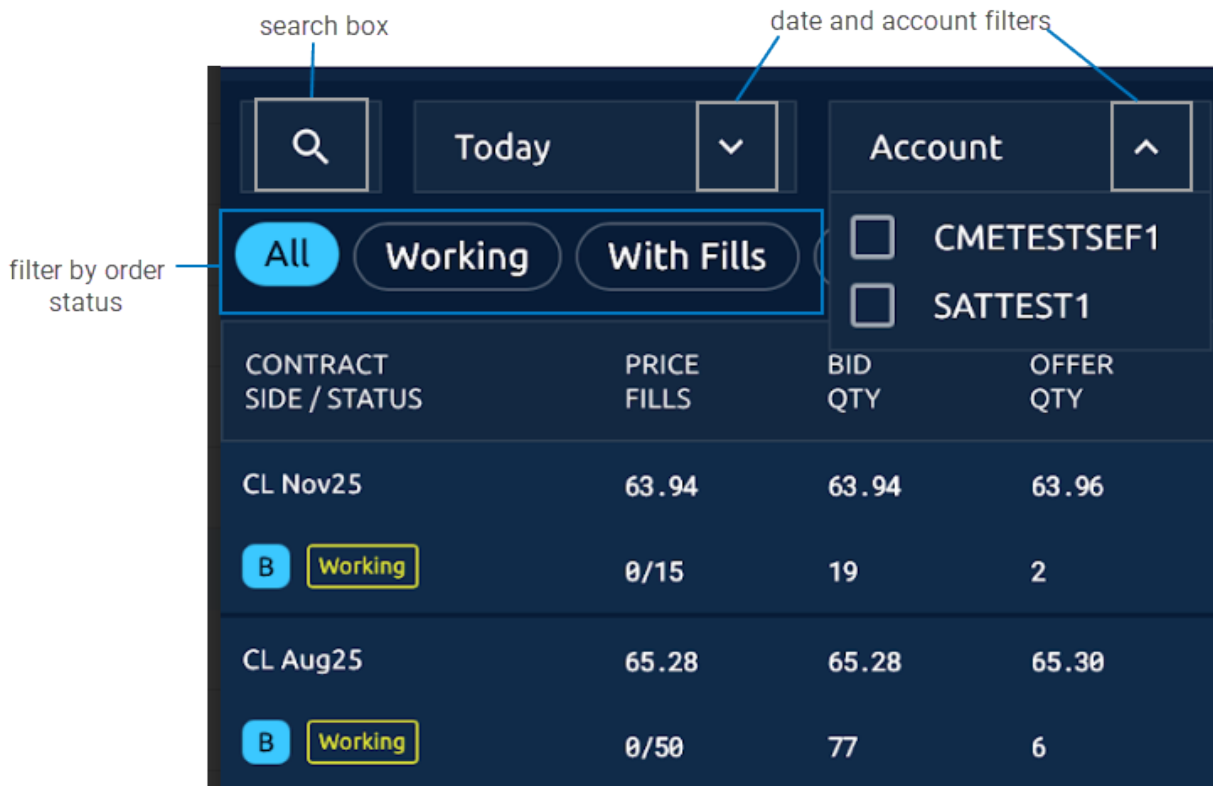
Orders

Use the **Orders** view to check the status of orders, access order details, and **Hold** or **Kill** all orders at one time; or **Modify** individual orders in your order book. Each order row displays the color associated with the order's status - Working (yellow), Filled (green), Cancelled (red), or Held (gray).

CONTRACT SIDE / STATUS	PRICE FILLS	BID QTY	OFFER QTY
CL Aug25 B Held	65.23 0/15	65.23 16	65.25 4
CL Sep25 S Working	64.74 0/20	64.72 16	64.74 30
ZF Jun25 S Filled	109' 115 50/50	109' 107 71	109' 145 358
CL May25 B Cancelled	63.03 0/1	63.00 2	63.08 3

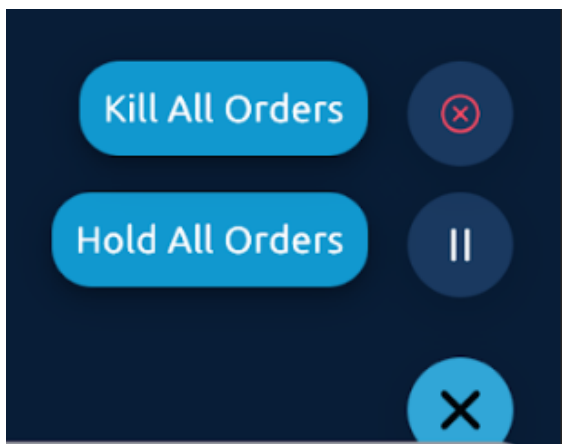
▶ To use the Order Book:

1. Tap one or more filters to find orders by status, date, and account. To search for specific orders click the magnifying glass.



Note: You need to enter a filter name and select at least one filter to create a filter.

- Use the **Kill All Orders** and **Hold All Orders** buttons to cancel or hold each of your working orders.



- Tap an order row to display order [details](#). From the detailed view you can **hold** an order, cancel an order, or modify an order.

Modify Order Details

Select a single order in the **Order Book** to display details of that order. This will also display views of market depth for the contract as well as your individual fills.

Held and **Working** orders can be modified and resubmitted to the market.

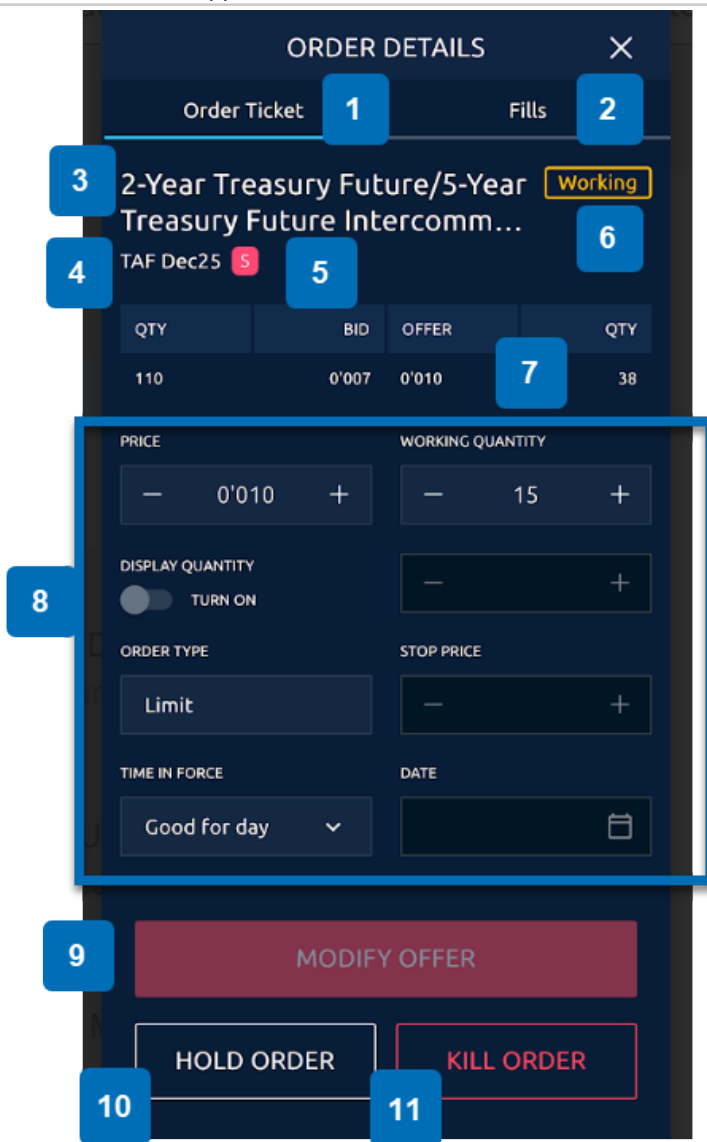
tap **Working**
and
Held orders
to modify

Search Order...		←		
All Working With Fills Cancelled Held				
CONTRACT SIDE / STATUS	PRICE FILLS	BID QTY	OFFER QTY	
CL Dec25	61.10	61.13	61.20	
B Working	0/25	9	5	
CL Sep25	61.67	61.61	61.67	
S Working	0/50	37	50	
CL Sep25	61.67	61.61	61.67	
S Held	0/1	37	50	
CL Dec25	61.13	61.13	61.20	
S Filled	5/5	9	5	
CL May25	63.03	63.00	63.08	
B Cancelled	0/1	2	3	

Kill All Orders ⊗
Hold All Orders ||

► **To use the order details window:**

1. Tap a row in the **Order Book**. The Order Book details display the following:



Field	Description
1. Order Ticket	Modifiable order ticket
2. Fills	Tab for fills for the order
3. Contract Name	Name of selected instrument.
4. Contract code and term	Code and term for selected instrument.
5. Buy or sell indicator	B in blue for buy and S in red for Sell
6. Status	Current status for order.
7. Top of Book	Real time data for the selected contract.
8. modifiable order parameters	See Enter Orders for details.

Field	Description
9. Modify Offer	Resubmit the order with modifications.
10. Hold Order	Select Hold Order (for Working orders), Activate Order (for Held orders)
11. Kill Order	Cancels this specific order.

Positions

The **Position** view offers enhanced exchange position data and shows profit and loss (P&L) on a per-Contract level. Positions view shows the position and P&L for an outright or strip contract.

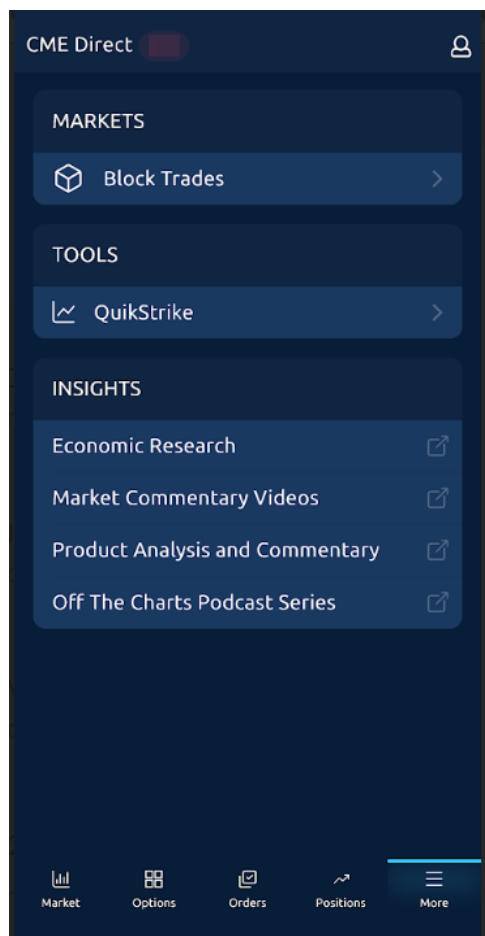
The following rules apply to positions and P&L at the Contract level:

- Buy and Sell prices display as Average Buy and Sell weighted prices for the contract.
- The Ref Price displayed can be the most recent price of the last trade in the contract, the price of an existing bid higher than the last trade price, or the price of an existing offer lower than the last trade price or settlement price.

Note: For additional details, refer to the [Positions](#) section of the CMED Trader Broker user guide.

CONTRACT	BUY QTY	AVG BUY	REF PRICE
NET POS	SELL QTY	AVG SELL	P&L (USD)
5-Year U.S. Treasury Note Future Dec25	0		109'055
-8	8	109'057.5	93.75
5-Year U.S. Treasury Note Future Mar26	1	109'065	109'065
1	0		0

More



Within the More tab, access the following information:

Markets

Use [Block Trades](#) to view block trades in real-time.

Tools

[QuikStrike](#) view offers analysis and pricing tools for a variety of asset classes and products.

Insights

Economic Research - Launches the [Economic Research](#) page, which provides expert insights and analysis of market events and trends.

Market Commentary Videos - Opens a [Video Archive](#) on cmegroup.com.

Product Analysis and Commentary - Launches the [Product Analysis and Commentary](#) page, which allows users to follow the latest product research.

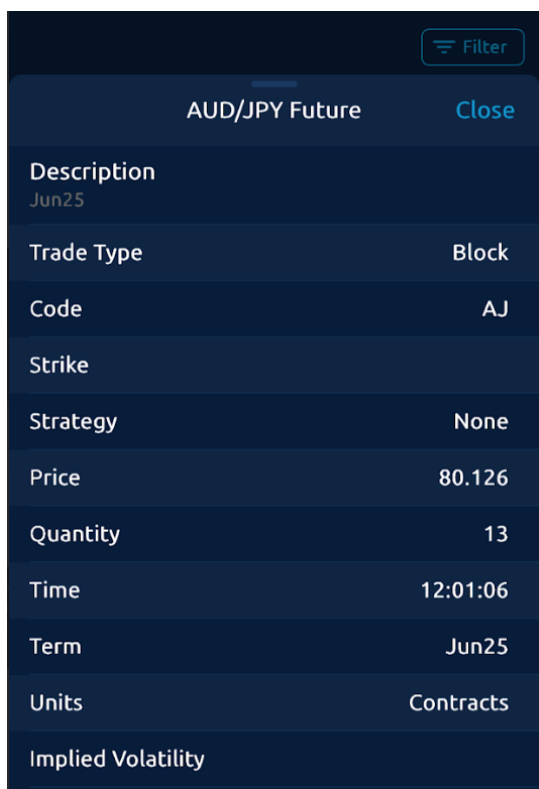
Off The Charts Podcast Series - Opens the page for [Off The Charts Podcast](#), which provides a deeper dive in to economic issues of the day.

Block Trades

Use Block data feeds, to view block trades in real-time.

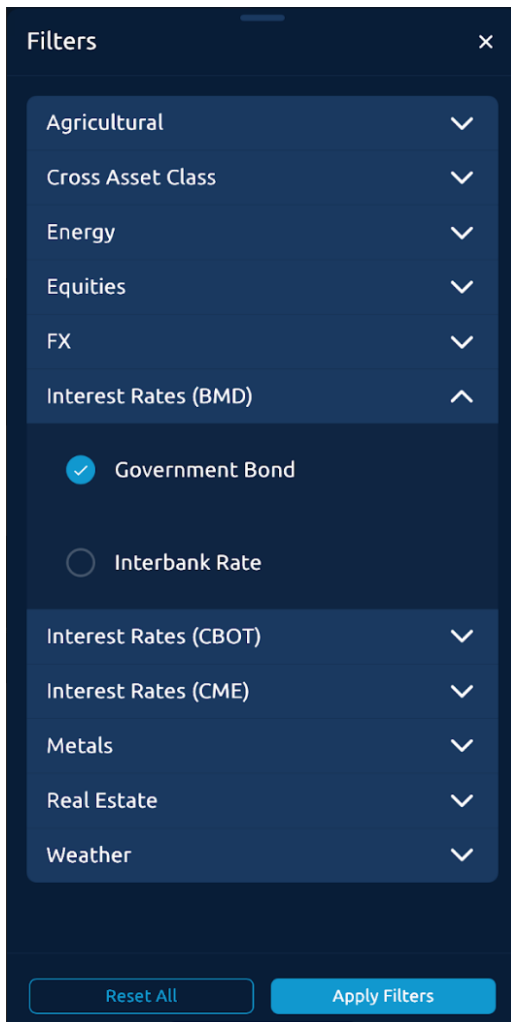
BLOCK TRADES					×
					Filter
Code	Type	Strategy	Price	Qty	
BUY	CC	Jun26/Mar26		5	
		Future	Spread		
BUY	CC	Jun26		5	
		Future	None		
SELL	CC	Mar26		5	
		Future	None		
BUY	KRW	Sep26/Jun26		6	
		Future	Spread		
BUY	KRW	Sep26		6	
		Future	None		
SELL	KRW	Jun26		6	
		Future	None		
BUY	ACD	Jun26		10	
		Future	None		
BUY	BR	Dec26		50	
		Future	None		

Select a row to view trade details.



AUD/JPY Future		Close
Description	Jun25	
Trade Type	Block	
Code	AJ	
Strike		
Strategy	None	
Price	80.126	
Quantity	13	
Time	12:01:06	
Term	Jun25	
Units	Contracts	
Implied Volatility		

Use the **Filters** feature to filter the display to show specific products or products groups only. Choose the products you want displayed and select **Apply Filters**. Select **Reset All** to display the default products

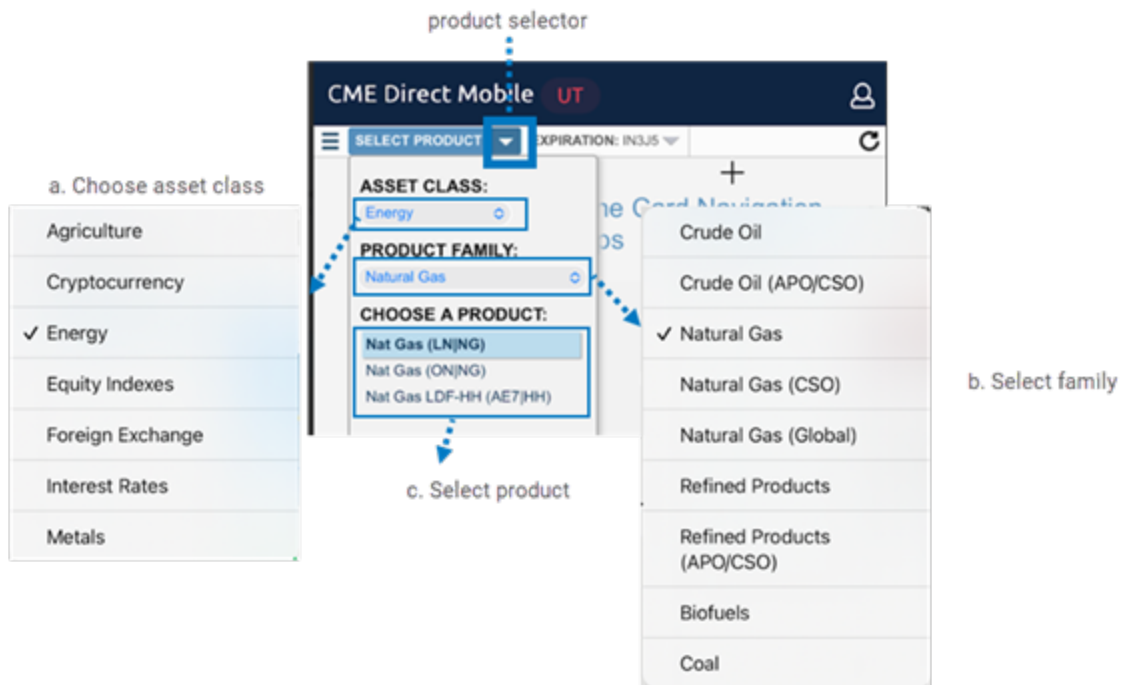


QuikStrike

QuikStrike view offers analysis and pricing tools for a variety of asset classes and products.

▶ **To populate the QuikStrike grid**

1. Use the Product selector to define the asset class, product family, and Product.



Use the Expiration selector to choose the expected need date for a contract. Default is the front month (nearest expiration).

EXPIRATION: LN2F5	
LN2F5	10 Jan 2025
Jan 25 [NGG5]	3.21 DTE
LN3F5	17 Jan 2025
Jan 25 [NGG5]	10.21 DTE
LN4F5	24 Jan 2025
Jan 25 [NGG5]	17.21 DTE
LNG5	28 Jan 2025
Feb 25 [NGG5]	21.21 DTE
LN5F5	31 Jan 2025
Jan 25 [NGH5]	24.21 DTE
LNH5	25 Feb 2025
Mar 25 [NGH5]	49.21 DTE
LNJ5	26 Mar 2025
Apr 25 [NGJ5]	78.17 DTE
LNK5	25 Apr 2025
May 25 [NGK5]	108.17 DTE
LNM5	27 May 2025
Jun 25 [NGM5]	140.17 DTE
LNN5	25 Jun 2025
Jul 25 [NGN5]	169.17 DTE
LNQ5	28 Jul 2025
Aug 25 [NGO5]	202.17 DTE

2. Select a charting option for the chosen product: Futures, Options, Volatility, Open Interest, and Strikes.

Select to display the available Tools

