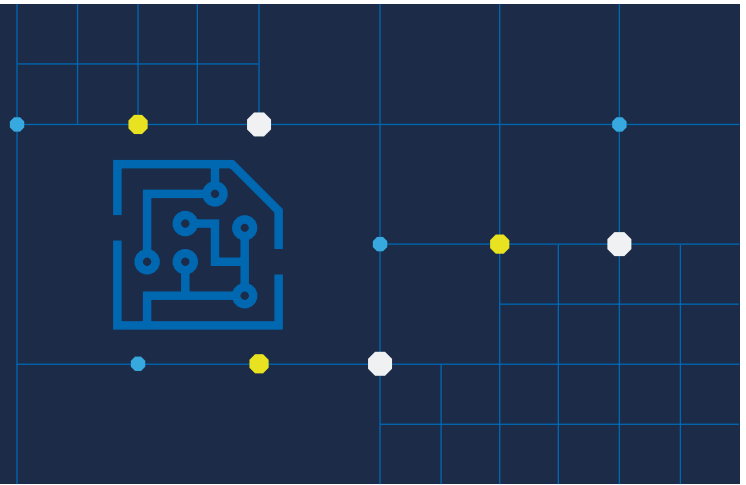


# Distribution as a Service

## Historical Data



Acquiring historical data is often the first step taken by market participants prior to trading on new markets or venues, yet it can often be difficult to obtain such data from the source.

CME DataMine is a leading marketplace for historical data distribution, provided by the largest and most diverse derivatives exchange in the world. Co-host your data with CME Group and ensure that:

- From day one, your historical data has a global ready-made customer base
- Customers can purchase and take delivery of data in minutes, via a self-service portal
- Your data is protected by a comprehensive licensing framework
- Distribution potential is maximized with minimum cost and risk

## Why CME DataMine?

### Unrivaled Experience

We were the first market operator to launch a cloud-based historical data marketplace, and continue to be industry pioneers in the field.

### Market-proven Model

The CME DataMine technology and business model has been proven over the past two years with significant international success.

### Brand Adjacency

CME DataMine hosts the data of some of the world's most recognized benchmark products. Positioning your data adjacent to those will maximize exposure.

### Success is Shared

You will be utilizing the same technology as our flagship CME DataMine platform and will benefit from an aggressive product roadmap.

### Industry-Leading Distribution

From day one your data will benefit from the widest distribution to the world's leading banks, brokers and buy-side investors.

### Low Risk and Cost

By leveraging a shared model, you can ensure that the associated cost is always less than the risk involved.

To learn more, contact [platformsolutions@cmegroup.com](mailto:platformsolutions@cmegroup.com) or visit [datamine.cmegroup.com](https://datamine.cmegroup.com)



---

[cmegroup.com](http://cmegroup.com)

Neither futures trading nor swaps trading are suitable for all investors, and each involves the risk of loss. Swaps trading should only be undertaken by investors who are Eligible Contract Participants (ECPs) within the meaning of Section 1a(18) of the Commodity Exchange Act. Futures and swaps each are leveraged investments and, because only a percentage of a contract's value is required to trade, it is possible to lose more than the amount of money deposited for either a futures or swaps position. Therefore, traders should only use funds that they can afford to lose without affecting their lifestyles and only a portion of those funds should be devoted to any one trade because traders cannot expect to profit on every trade.

CME Group, the Globe Logo, CME, Globex, E-mini, CME Direct, CME DataMine and Chicago Mercantile Exchange are trademarks of Chicago Mercantile Exchange Inc. CBOT is a trademark of the Board of Trade of the City of Chicago, Inc. NYMEX is a trademark of New York Mercantile Exchange, Inc. COMEX is a trademark of Commodity Exchange, Inc. All other trademarks are the property of their respective owners.

The information within this communication has been compiled by CME Group for general purposes only. CME Group assumes no responsibility for any errors or omissions. Additionally, all examples in this communication are hypothetical situations, used for explanation purposes only, and should not be considered investment advice or the results of actual market experience. All matters pertaining to rules and specifications herein are made subject to and superseded by official CME, CBOT, NYMEX and COMEX rules. Current rules should be consulted in all cases concerning contract specifications.