

Design a Private Trading Challenge

Have there been times when the opportunity to trade live futures markets could have enhanced the impact of your classwork or training programs?

CME Institute can help.

Find out how to set up a live trading challenge for a private group using our simulated practice environment.

Our private trading environments give students a risk-free way to get in and get vital experience navigating the markets, while honing their futures knowledge.

Check out the features of our Challenge environment to see how this could enhance your educational program.



HOW IT WORKS

Standard Features

- Challenge participants will be assigned a virtual account of \$100,000 USD.
- Trading simulator uses live market data to simulate trades.
- Leaderboard provides all participants a way to see their standings compared to the group.
- Maximum of 10 open positions per product at one time.
- Margin is calculated for all trades. Once margin limits are exceeded, participants cannot add more trades without taking action. To free up margin resources, they can:
 - Liquidate existing positions
 - Grow their account balances above margin limits through trade profits
 - Trade another product with lower margin requirements

Customize Challenge Features

- By Instrument type: Futures only, options on futures only, or both
- By Asset class: Limit to top products in one, a combination of, or all six asset classes at CME Group (Bitcoin futures included)
 - Agriculture
 - Energy
 - Equity Indices
 - FX (foreign exchange)
 - Interest Rates
 - Metals

Add Education Requirements (Optional)

Add/mandate any online course(s) from the Institute Course Catalog to the Challenge Dashboard as you see fit. There are no limits on number of course requirements. Browse the current course list at cmegroup.com/education/learn.html

Tip: Introduction to Futures, Introduction to Options, and Building Your Trade Plan are frequently requested courses for private trading challenges

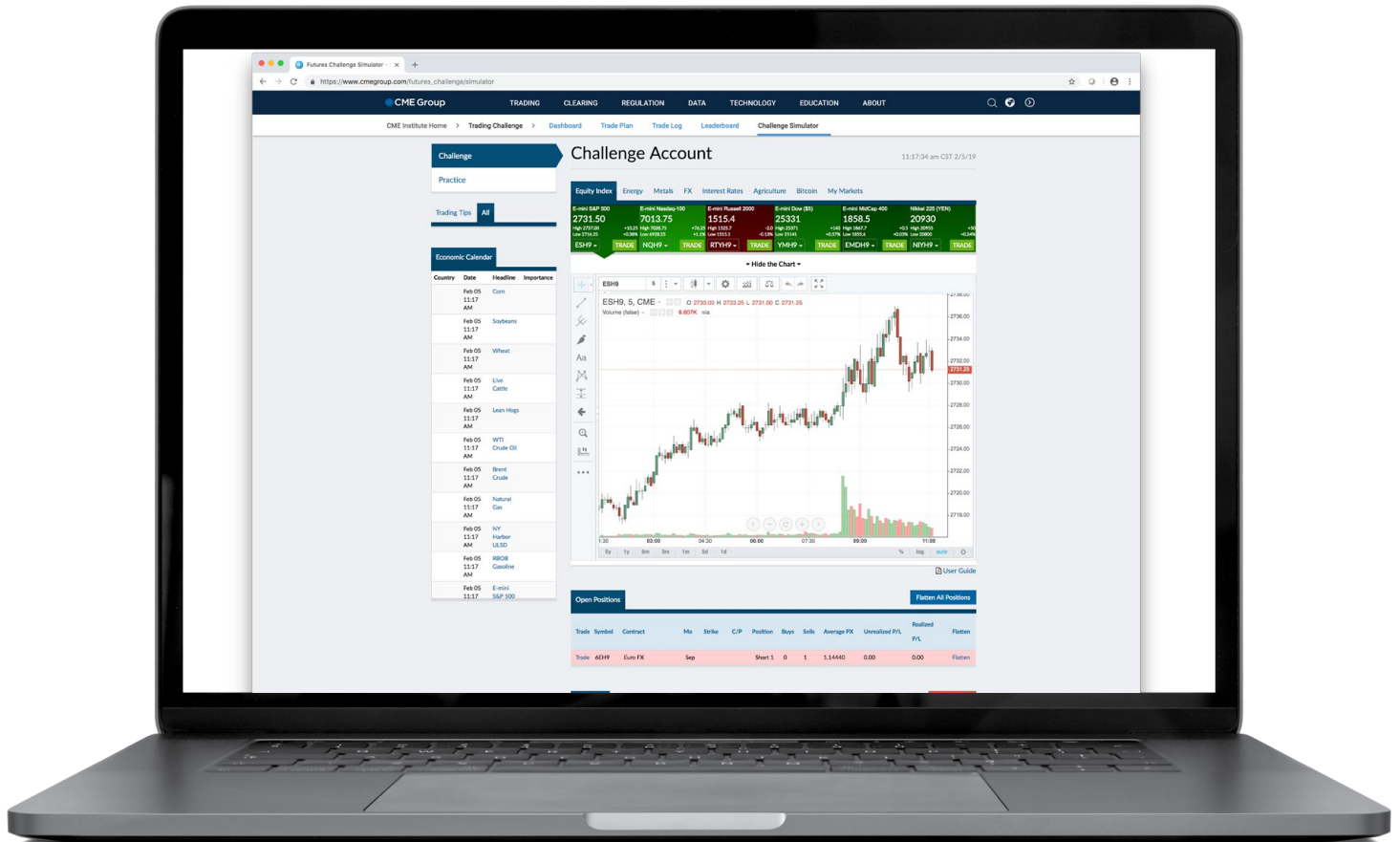
The image displays two screenshots of the CME Group trading challenge interface. The top screenshot shows the 'Dashboard' page, which includes a 'Welcome' message, 'About your challenge' section with a 'YOUR LOGO' placeholder, a 'Challenge Acct Snapshot' showing a \$0.00 balance, and an 'Eligibility Checklist' with a 'Join a F' button. The bottom screenshot shows the 'Futures Challenge Leaderboard' page, featuring a 'Current Leaders' list with three entries, an 'Eligibility Checklist' button, and a detailed table for the 'Thunderbird Futures Challenge (Jan 19)' from 1/23/2019 to 3/06/2019. The table includes columns for Rank, Username, Balance, Trades, Products Traded, Daily P & L, and Total P & L.

Rank	Username	Balance	Trades	Products Traded	Daily P & L	Total P & L
1						
2						
3						
4						
5						
6						
7						
8						
9						
10						

Monitor Activity

As the professor/facilitator for the private trading challenge, you'll have access to administrator tools that enable you to view trade logs for all your students and track progress on course completions.

Tip: To view products available for a challenge, open a free account and access our Practice Simulator at cmegroup.com/education/practice.html



ACCESS CHALLENGE

To set up your private trading challenge, email institute@cmegroup.com with the following information:

- Name of the Challenge
- Start day and time
- End day and time
- List of products you want to trade
- Names of courses you would like to offer in the Challenge Dashboard

For more information about Trading Challenges, visit cmegroup.com/education today.



cmegroup.com

The information herein has been compiled by CME Group for general informational and educational purposes only and does not constitute trading advice or the solicitation of purchases or sale of any futures, options or swaps. All examples discussed are hypothetical situations, used for explanation purposes only, and should not be considered investment advice or the results of actual market experience. All matters pertaining to rules and specifications herein are made subject to and are superseded by official CME, CBOT and NYMEX rules. Current rules should be consulted in all cases concerning contract specifications.

CME Group is a registered trademark of Chicago Mercantile Exchange Inc. The Globe logo, CME and Chicago Mercantile Exchange are trademarks of Chicago Mercantile Exchange Inc. Chicago Board of Trade is a trademark of the Board of Trade of the City of Chicago, Inc. NYMEX is a trademark of the New York Mercantile Exchange, Inc.

Copyright© 2019 CME Group Inc. All rights reserved.

PM21_ED001/0420