

# Agricultural Options

June 2018

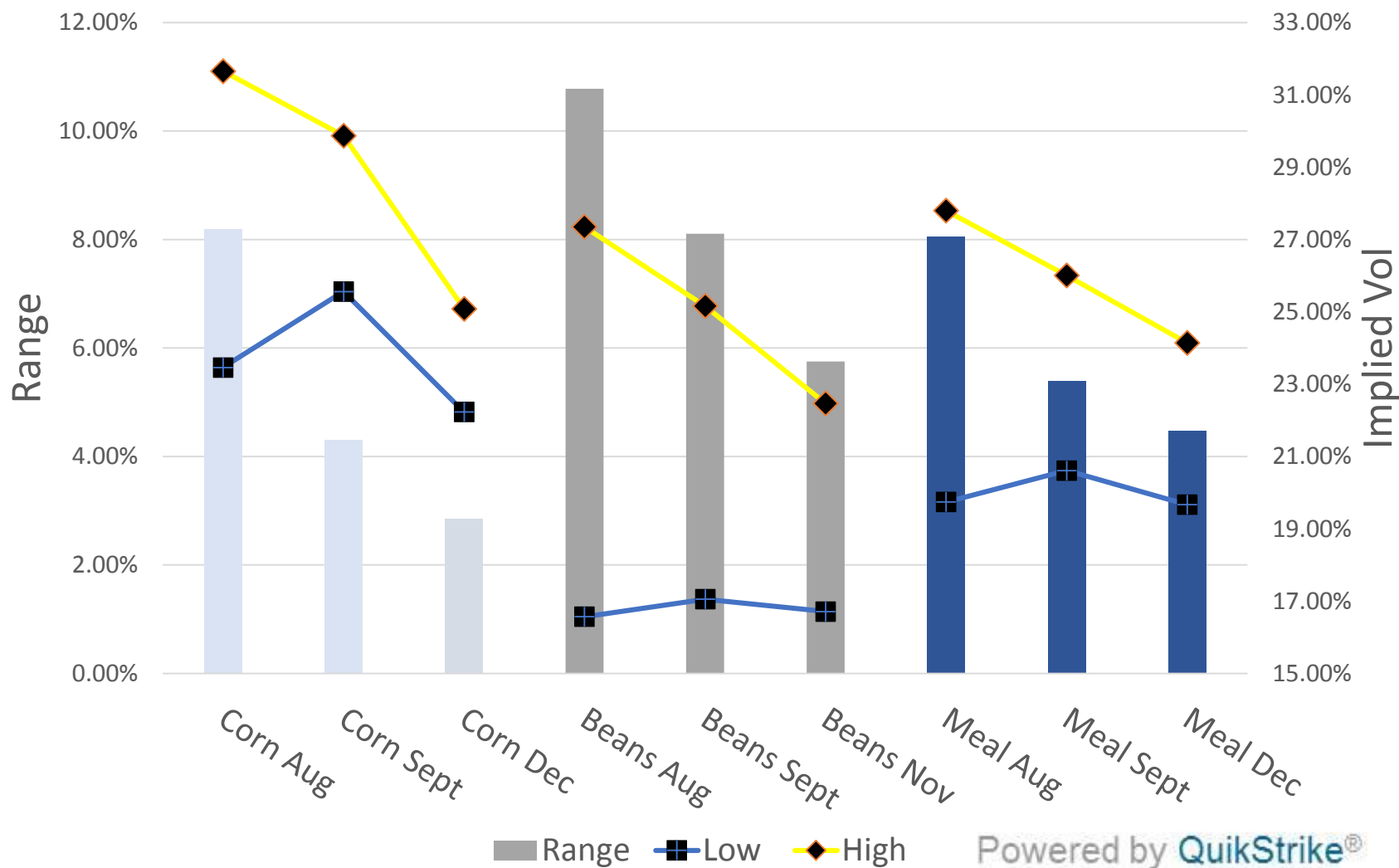
# Ag Option Product Suite

## Highlights

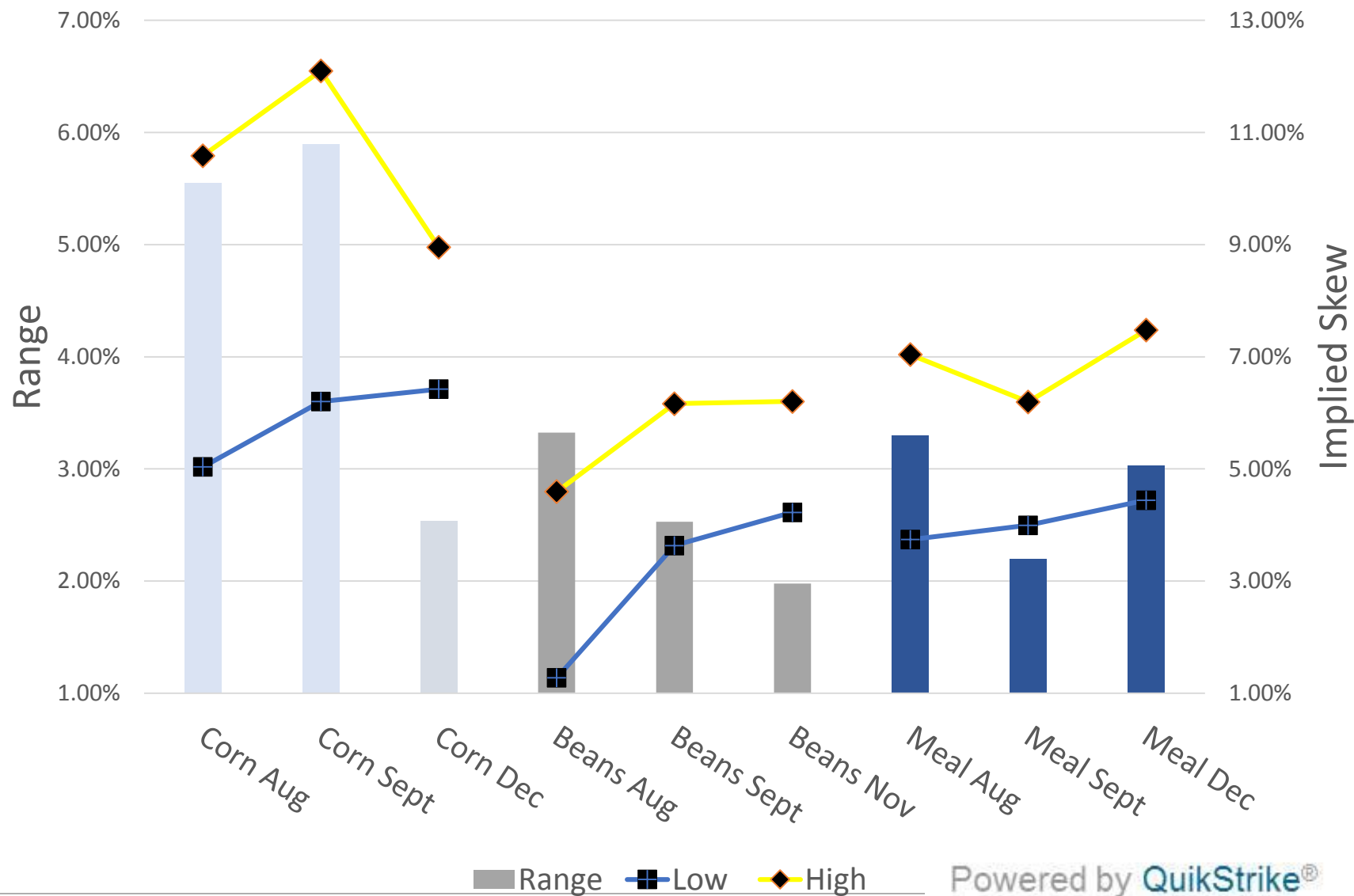
- Grain & Oilseed markets experienced large ranges in implied volatility and skew throughout June
- Record percent of volume on Globex done as a recognized spread
- Max quantity order increased on Globex for [select products](#)

Option Product	June ADV	Year/Year % Change
Corn	177,009	24%
Soybean	106,781	48%
Chicago SRW Wheat	40,028	-10%
Soybean Meal	17,680	94%
Live Cattle	8,712	-15%
Hogs	11,512	15%
Soybean Oil	5,323	-39%
Short-Dated New Crop Option	13,044	89%
Ag Weekly Option	4,423	12%
KC HRW Wheat	3,460	-13%

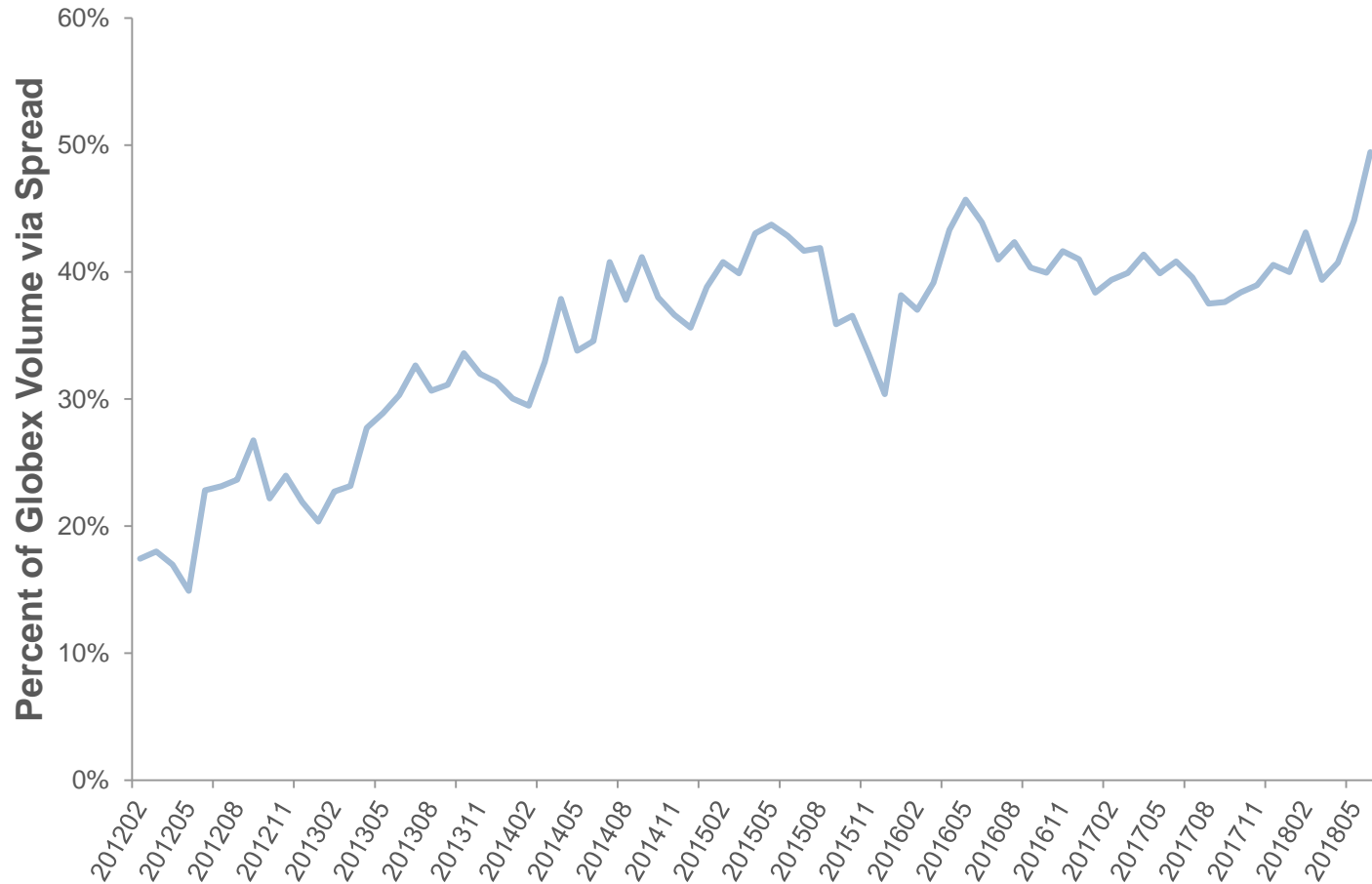
# Range of Implied Volatility in June



# Range of Skew (Call-Put) 25 Delta in June

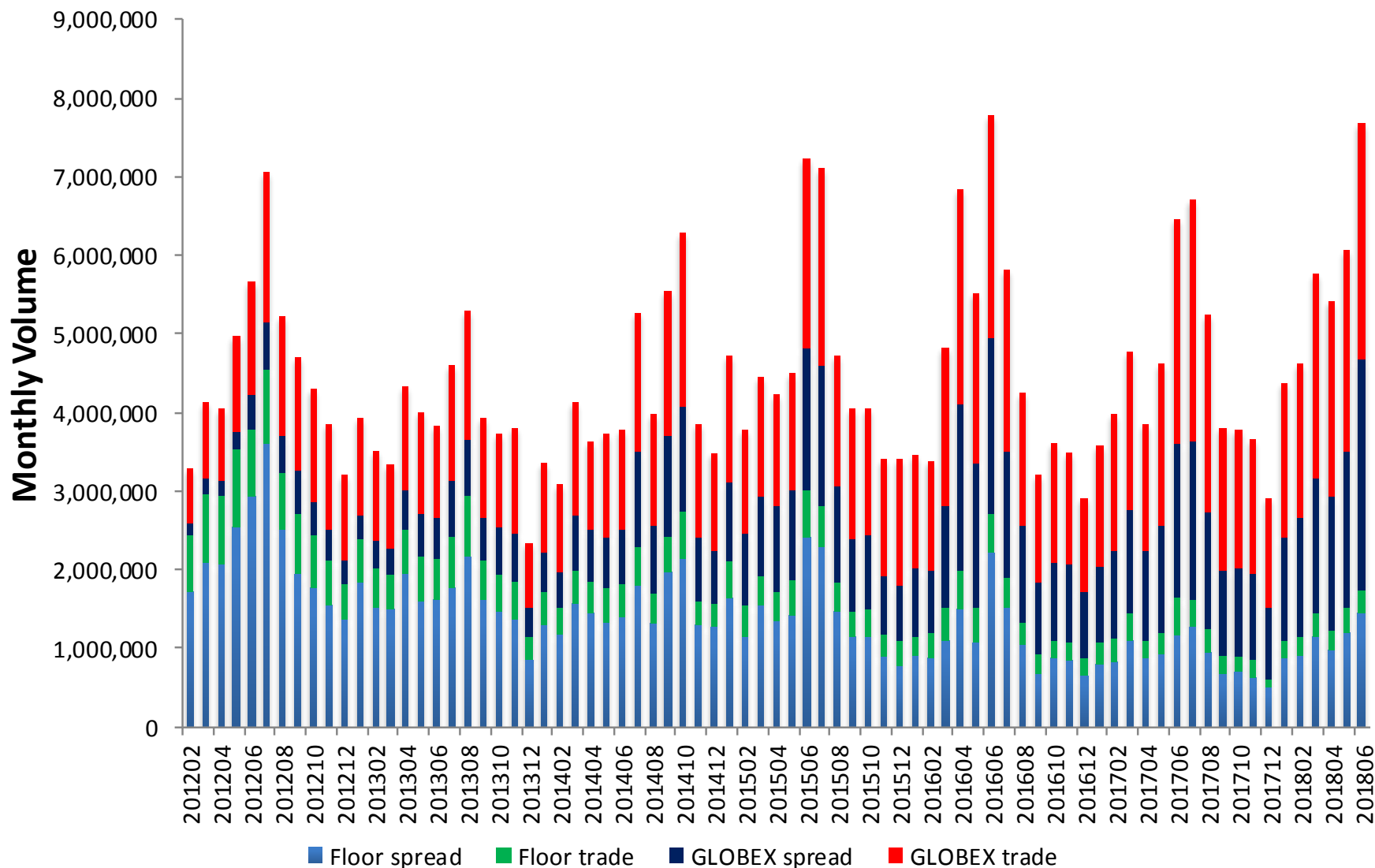


# Record, 49% of Grain & Oilseed volume on Globex was done as a spread

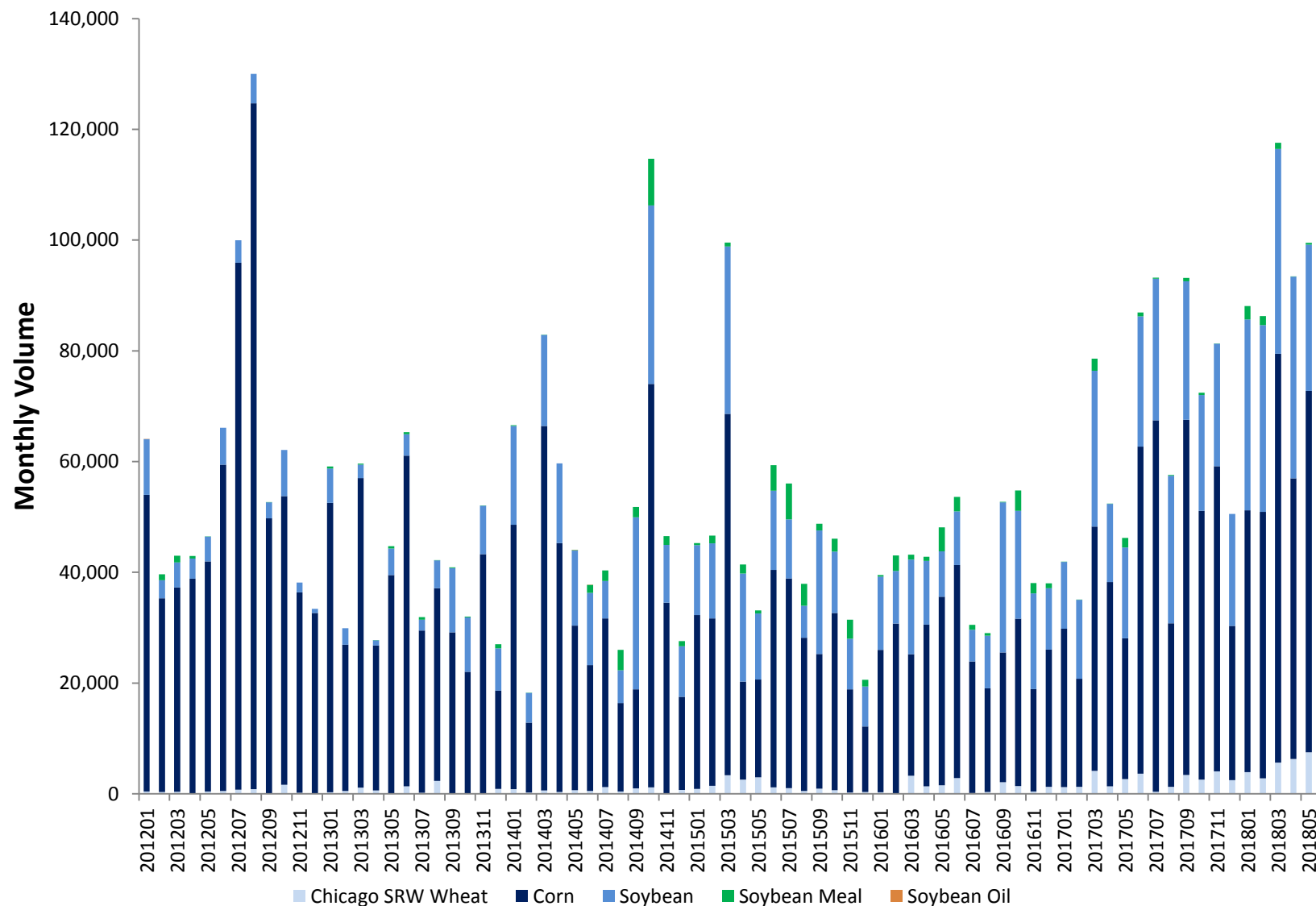


# Volume – Time Series

# Grain/Oilseed Option Volume By Venue

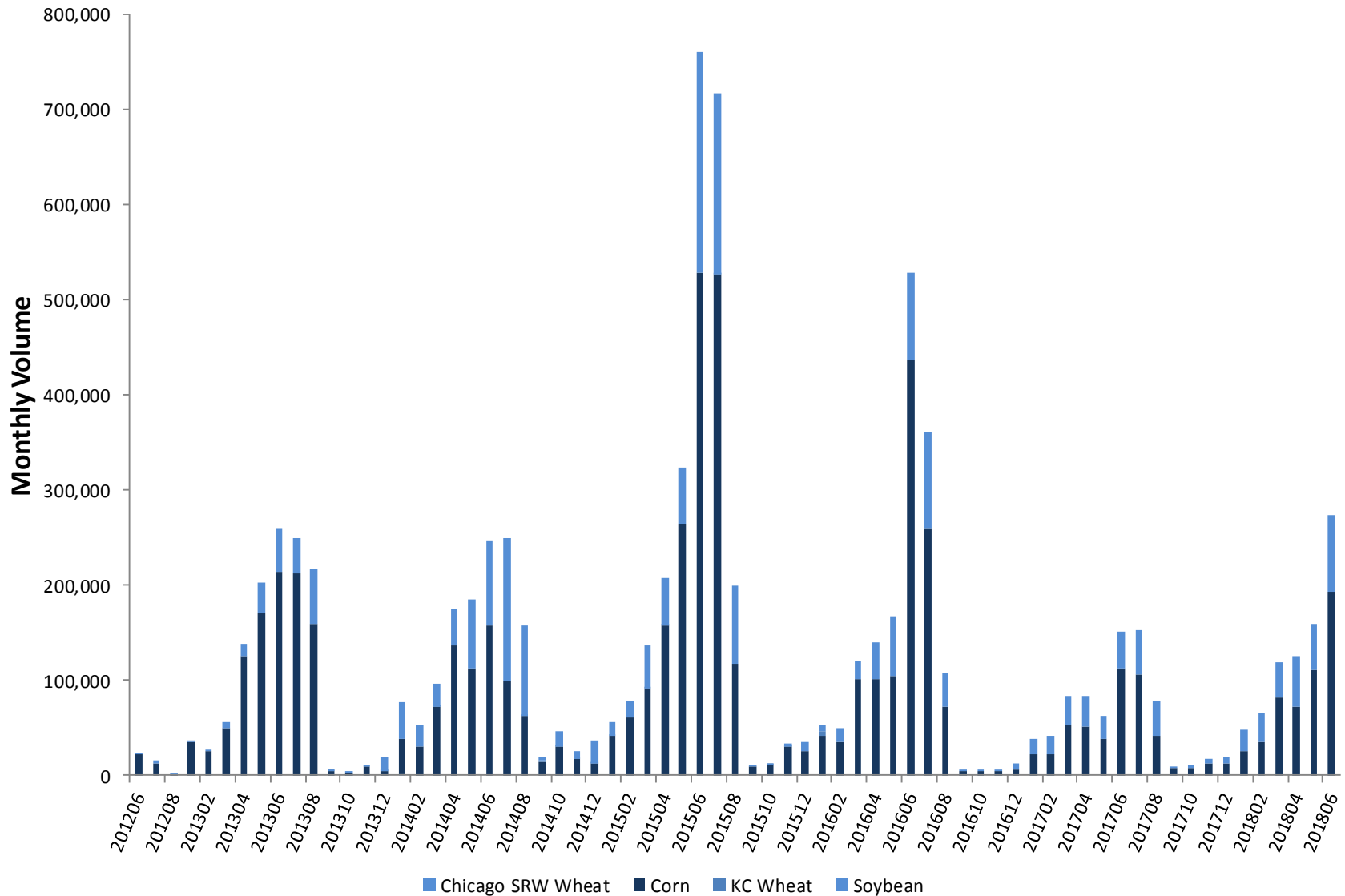


# Weekly Option Volume

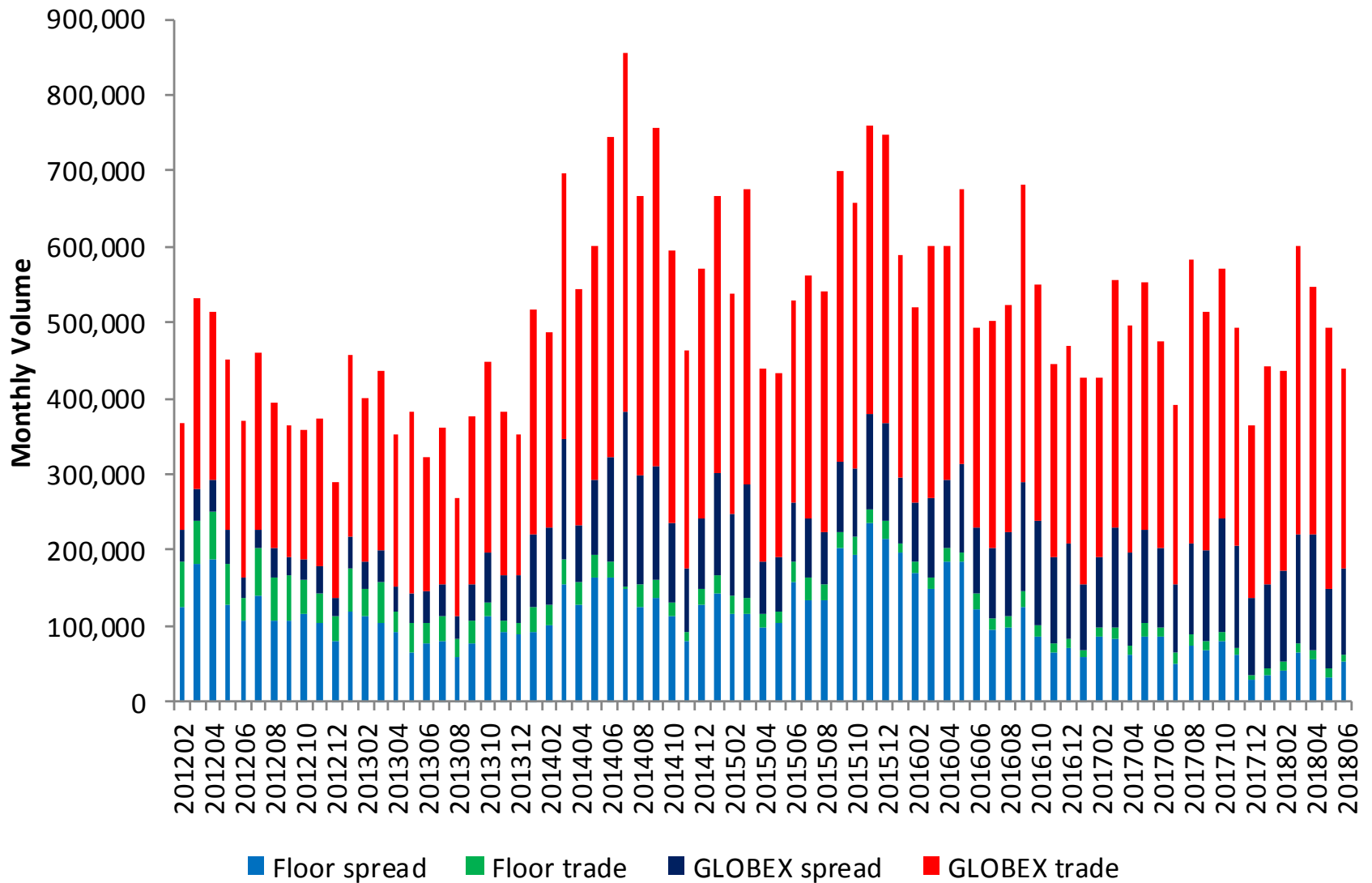




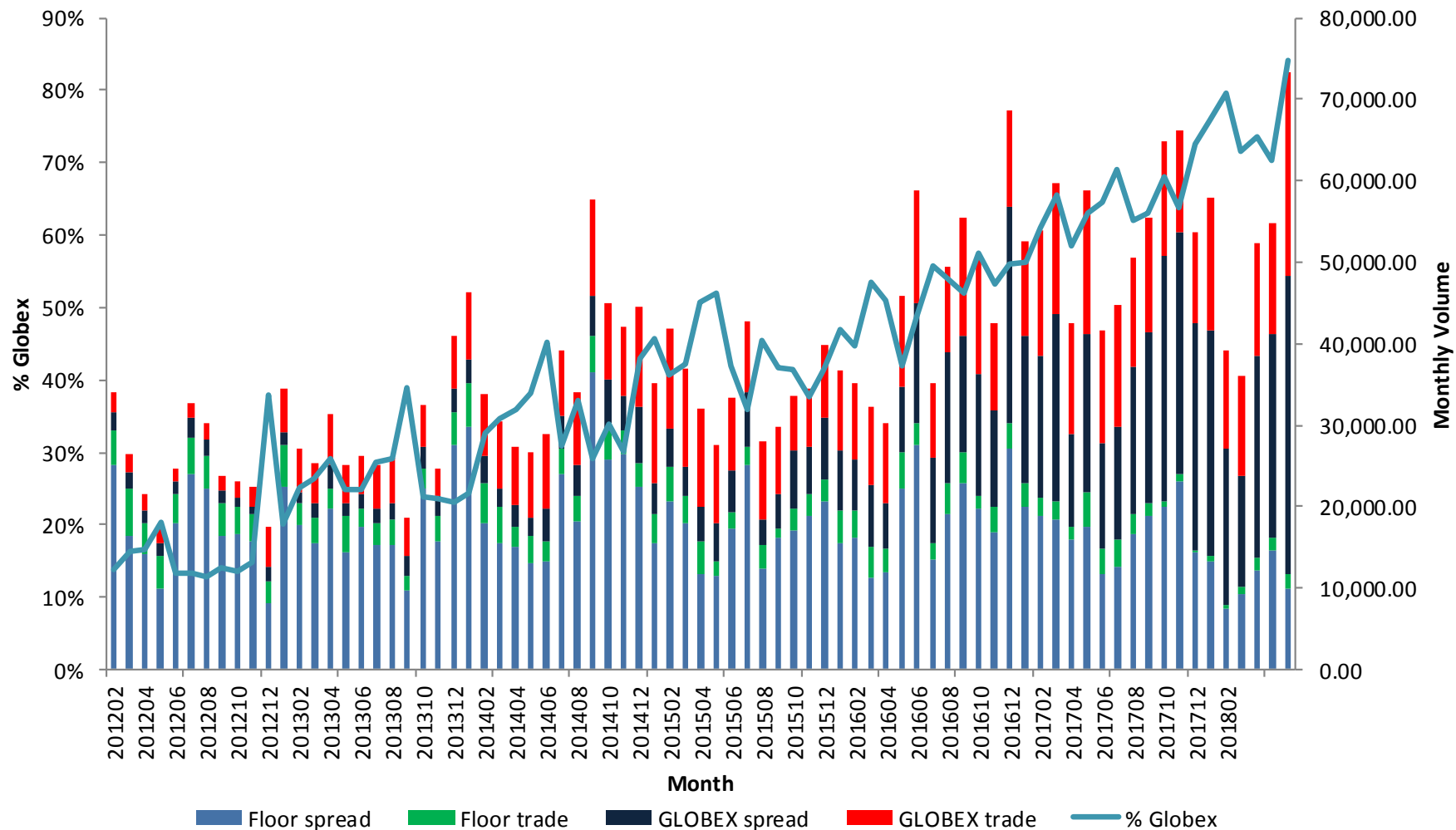
# Short Dated New Crop Option Volume



# Livestock Option Volume By Venue



# Dairy Option Volume By Venue



# Contact Info

Steven A Stasys  
Senior Director, Agricultural Options

[steven.stasys@cmegroup.com](mailto:steven.stasys@cmegroup.com)  
312-648-3822

# Disclaimer

Futures trading is not suitable for all investors, and involves the risk of loss. Futures are a leveraged investment, and because only a percentage of a contract's value is required to trade, it is possible to lose more than the amount of money deposited for a futures position. Therefore, traders should only use funds that they can afford to lose without affecting their lifestyles. And only a portion of those funds should be devoted to any one trade because they cannot expect to profit on every trade. All references to options refer to options on futures.

Swaps trading is not suitable for all investors, involves the risk of loss and should only be undertaken by investors who are ECPs within the meaning of section 1(a)(12) of the Commodity Exchange Act. Swaps are a leveraged investment, and because only a percentage of a contract's value is required to trade, it is possible to lose more than the amount of money deposited for a swaps position. Therefore, traders should only use funds that they can afford to lose without affecting their lifestyles. And only a portion of those funds should be devoted to any one trade because they cannot expect to profit on every trade.

Any research views expressed are those of the individual author and do not necessarily represent the views of the CME Group or its affiliates.

CME Group is a trademark of CME Group Inc. The Globe Logo, CME, Globex and Chicago Mercantile Exchange are trademarks of Chicago Mercantile Exchange Inc. CBOT and the Chicago Board of Trade are trademarks of the Board of Trade of the City of Chicago, Inc. NYMEX, New York Mercantile Exchange and ClearPort are registered trademarks of New York Mercantile Exchange, Inc. COMEX is a trademark of Commodity Exchange, Inc. KCBOT, KCBT and Kansas City Board of Trade are trademarks of The Board of Trade of Kansas City, Missouri, Inc. All other trademarks are the property of their respective owners.

The information within this presentation has been compiled by CME Group for general purposes only. CME Group assumes no responsibility for any errors or omissions. Additionally, all examples in this presentation are hypothetical situations, used for explanation purposes only, and should not be considered investment advice or the results of actual market experience.

All matters pertaining to rules and specifications herein are made subject to and are superseded by official Exchange rules. Current rules should be consulted in all cases concerning contract specifications.

Copyright © 2018 CME Group. All rights reserved.