

Conceptual Message Flows - Bunched Order Allocation Instruction Submissions - Rejected

Use this search bar to search topics within the CME ClearPort API.

This page describes workflows associated with allocation instructions rejected by CME Clearing.

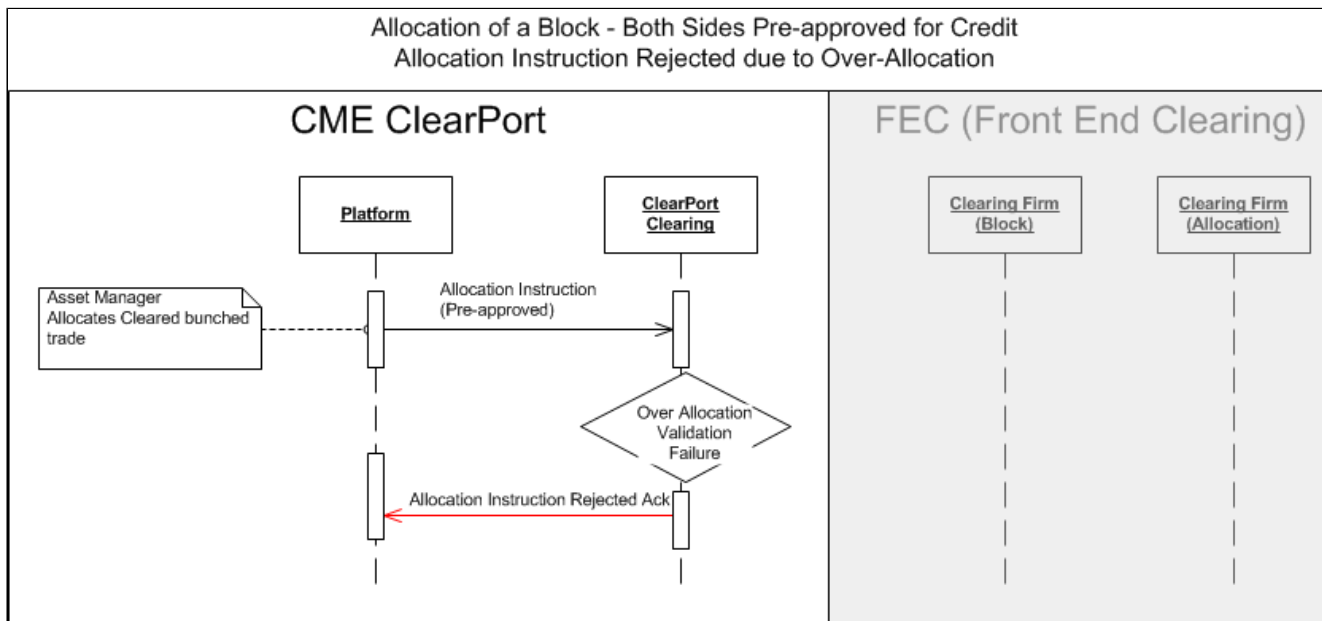
- [Allocation instruction rejected by CME Clearing due to an over-allocation](#)
- [Allocation instruction w/ multiple allocations \(explicit claim\) – one of the allocations rejected by CME Clearing](#)
- [Allocation rejected by clearing firm and resubmitted by platform](#)

Allocation instruction rejected by CME Clearing due to an over-allocation

In this scenario, the platform / clearing firm sends an allocation instruction to allocate a previously cleared bunched order trade designating one or more accounts / funds.

The steps are:

- The platform / clearing firm sends an allocation instruction to allocate a cleared bunched order trade.
- CME Clearing validates the allocation instruction for the following allocation details:
 - Presence of the bunched trade being allocated in the system based on the identifiers sent in the allocation instruction.
 - Accounts being allocated to are valid accounts.
 - Sum of all the allocations doesn't exceed the block quantity.
- In this use case, the allocated quantity exceeds the block trade quantity.
- The submitter receives a negative acknowledgement.



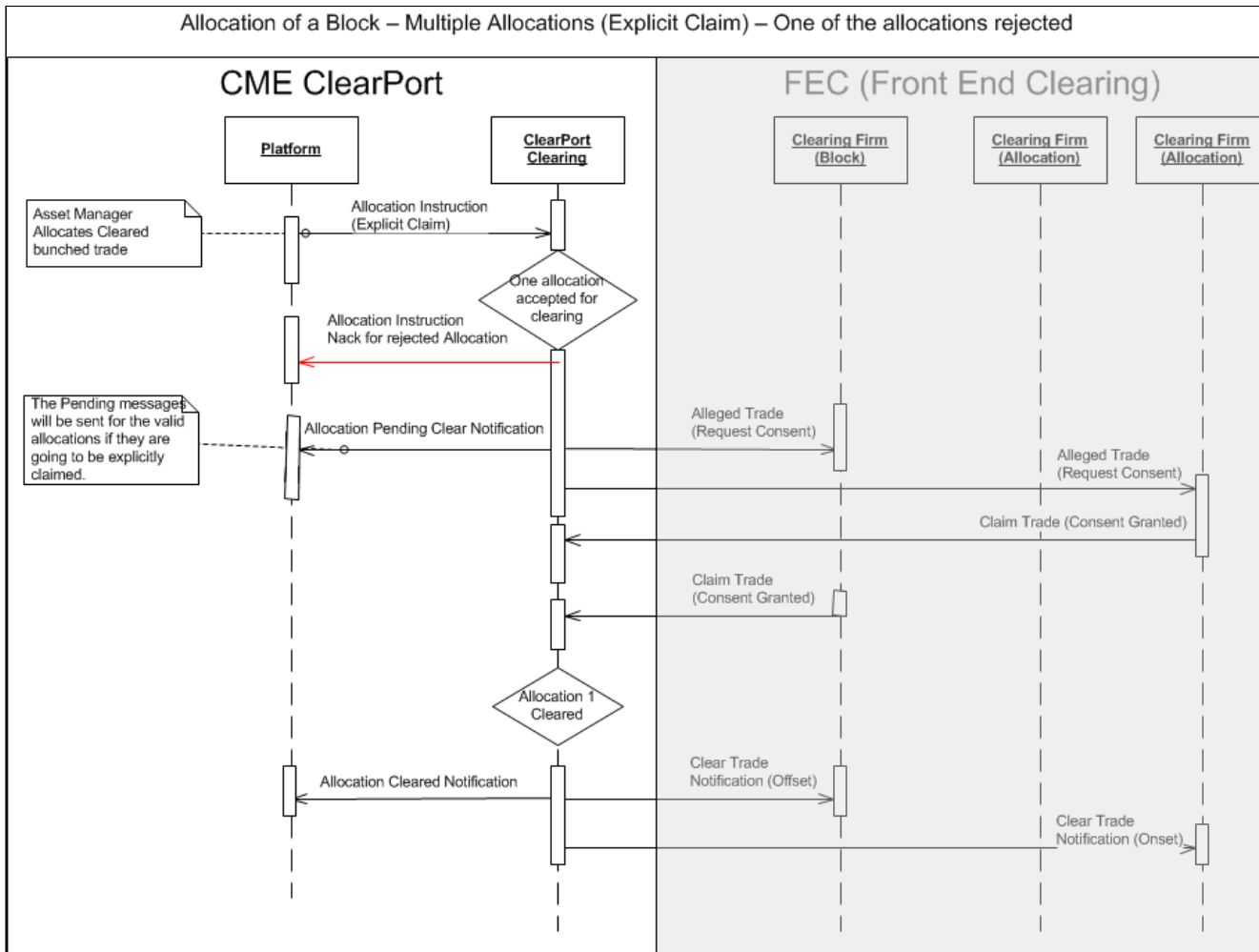
Allocation instruction w/ multiple allocations (explicit claim) – one of the allocations rejected by CME Clearing

In this scenario, the platform / clearing firm sends an allocation instruction with multiple allocations to allocate a previously cleared bunched order trade designating more than one account.

The steps are:

- The platform / clearing firm sends an allocation instruction to allocate a cleared bunched order trade.
- CME Clearing validates the allocation instruction for the following allocation details:
 - Presence of the bunched trade being allocated in the system based on the identifiers sent in the allocation instruction.
 - Accounts being allocated to are valid accounts.
 - Sum of all the allocations doesn't exceed the block quantity.
- One of the allocations fails account validations.

- The submitter receives a negative acknowledgement for the rejected allocation.
- The valid allocations are sent to the clearing firms for explicit claim and the platform receives a pending clear notification for each valid allocation.
- As the clearing firms claim, CME Clearing notifies the submitter of cleared allocations.



Allocation rejected by clearing firm and resubmitted by platform

In this scenario, the platform / clearing firm sends an allocation instruction with multiple allocations to allocate a previously cleared bunched order trade designating more than one account. After a clearing firm rejects one of the allocations, the platform re-submits the allocation.

The steps are:

- The platform / clearing firm sends an allocation instruction to allocate a cleared bunched order trade.
- CME Clearing validates the allocation instruction for allocation details.
 - Presence of the bunched trade being allocated in the system based on the identifiers sent in the allocation instruction.
 - Accounts being allocated to are valid accounts.
 - Sum of all the allocations doesn't exceed the block quantity.
- CME Clearing sends the valid allocations to the clearing firms for explicit claim, and the platform receives a pending clear notification for each valid allocation.
- As the clearing firms claim, CME Clearing notifies the submitter of cleared allocations.
- In this use case, one of the clearing firms rejects the allocation.
- CME Clearing notifies the platform of the clearing firm reject.
- The platform resubmits the rejected allocation with a different account and clearing firm.
- The rest of the workflow is the same as the [Bunched Order Allocation Instruction Submission - Successfully processed](#).

A platform can re-submit an allocation only if it has been rejected.

