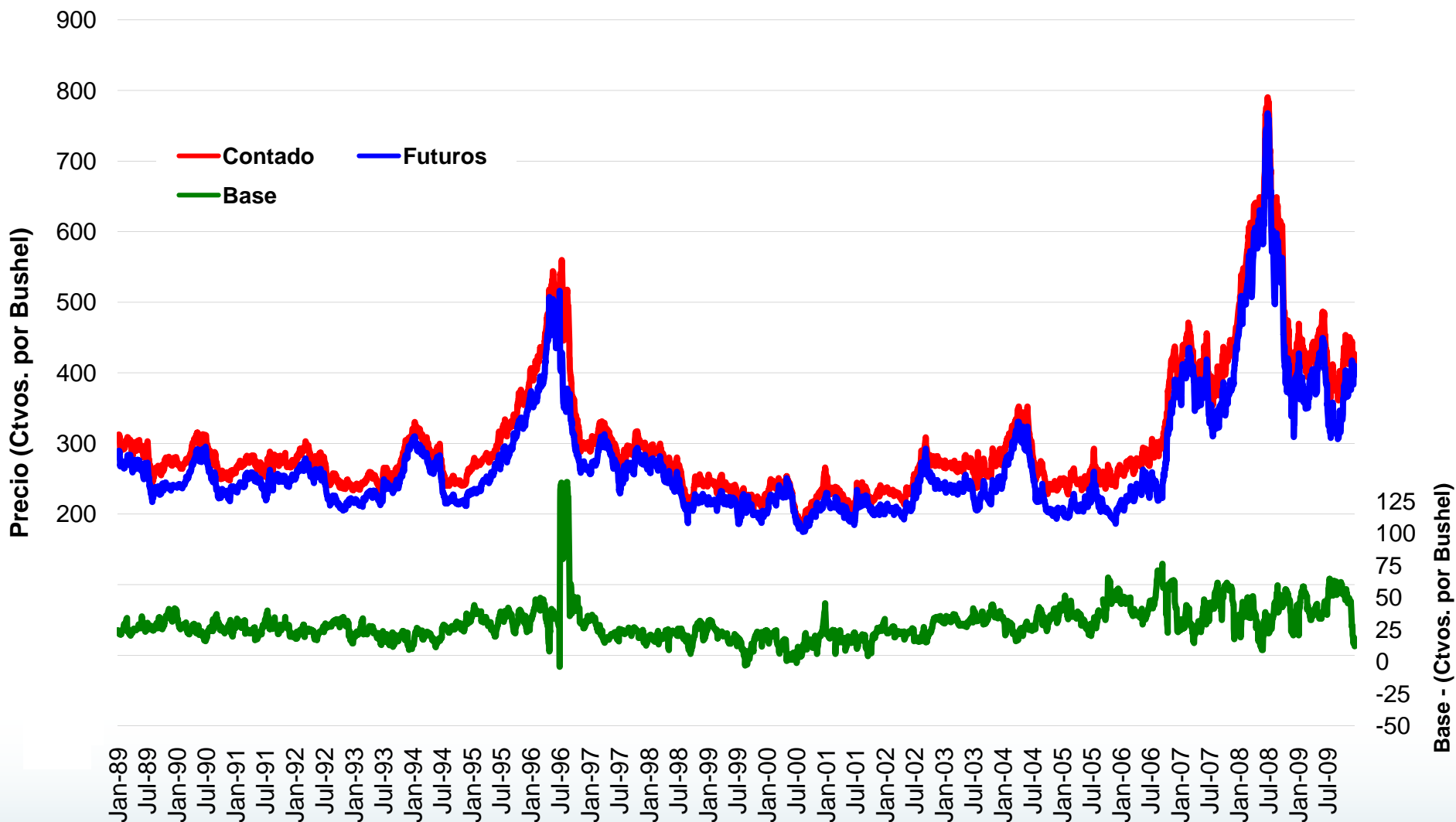


Actualización de Bases del Golfo - Maíz, Soja y Trigo

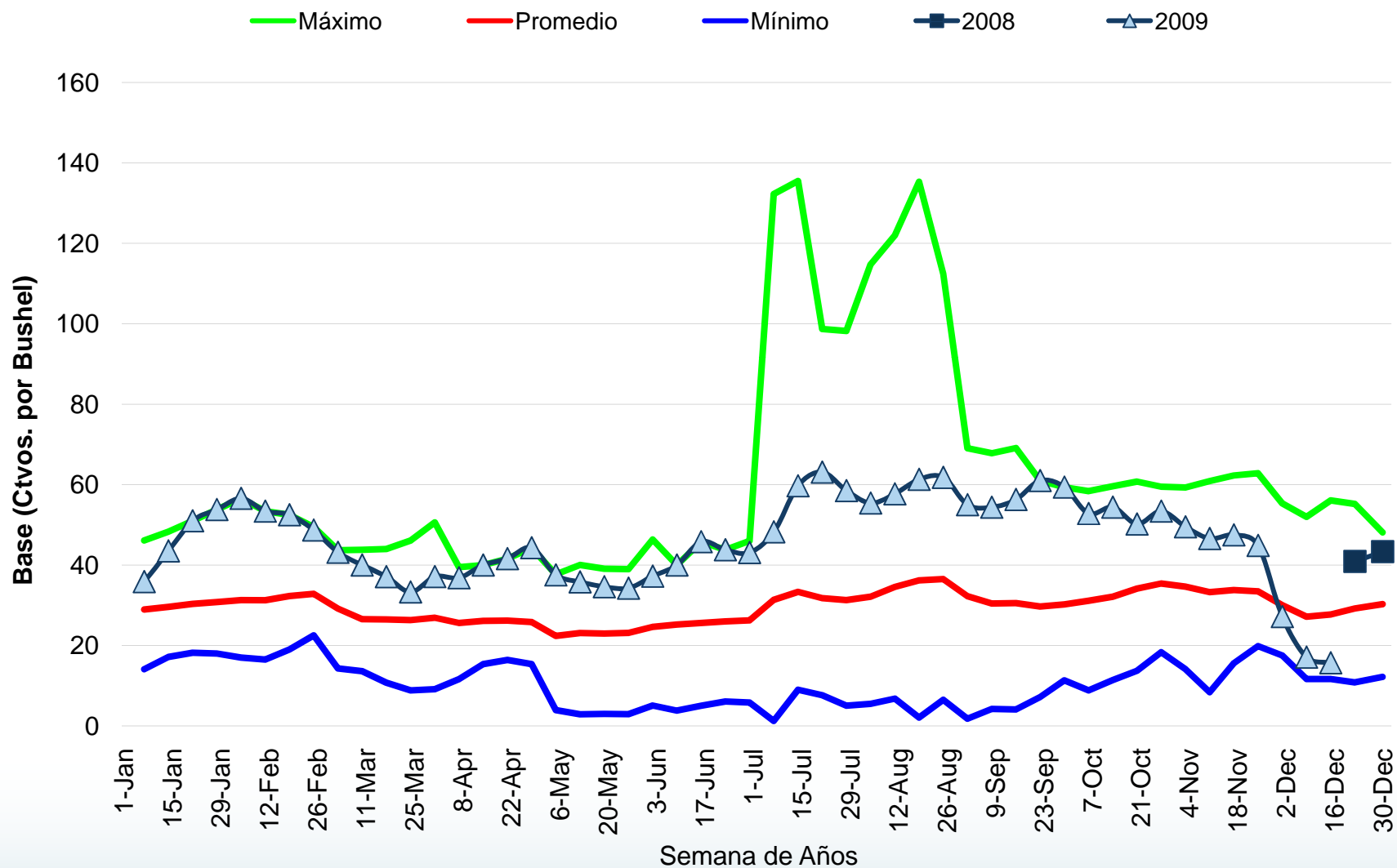
Investigación y Desarrollo de Productos
Actualizado el 17 de Diciembre de 2009

Maíz: Futuro Cercano, Precio de Exportación en Golfo, y Base

Enero 1989 - Diciembre 17, 2009



Precio de Exportación en Golfo - Base de Futuro Cercano de Maíz



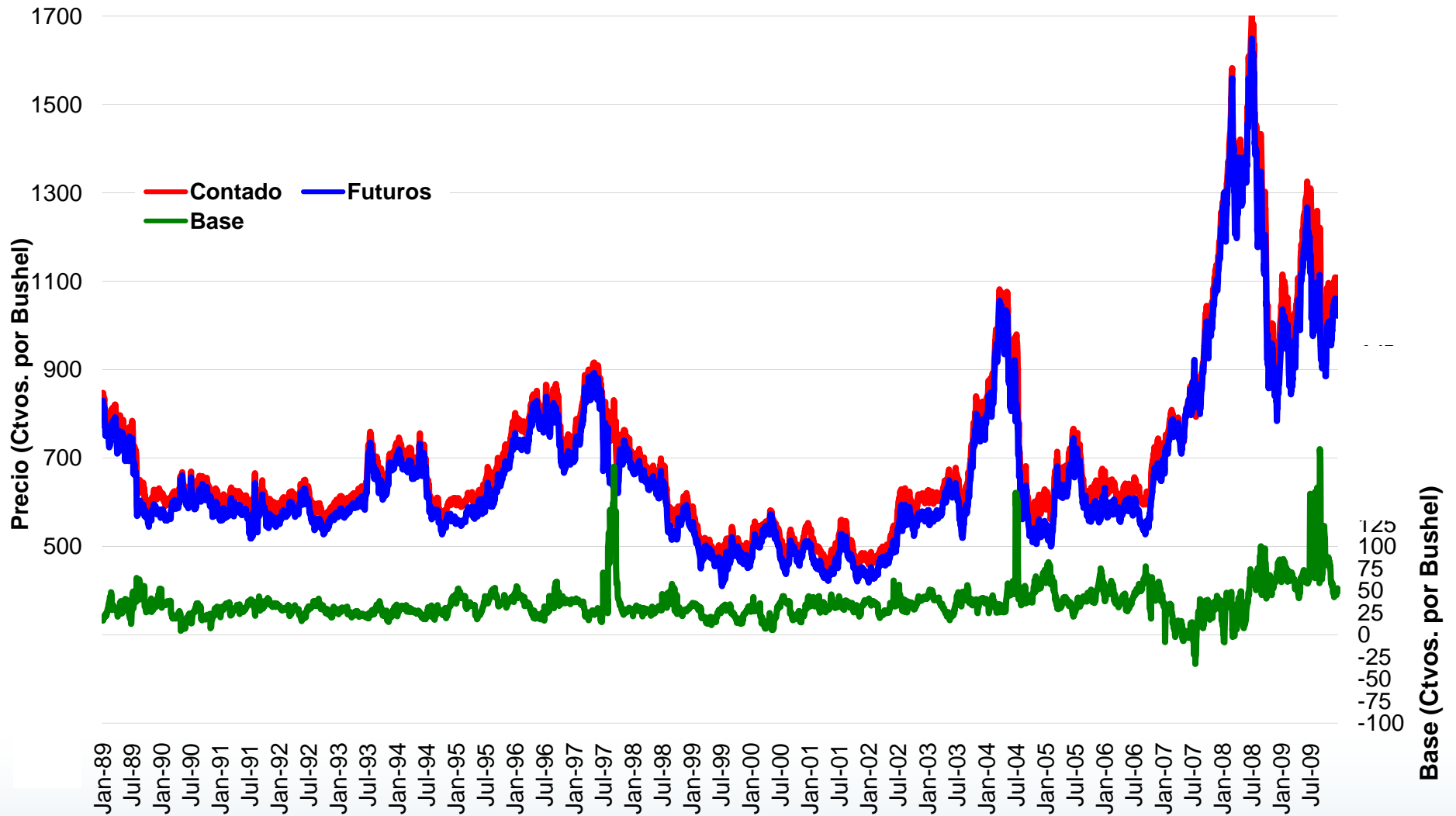
Maíz: Base a Golfo

Maíz: Base a Golfo

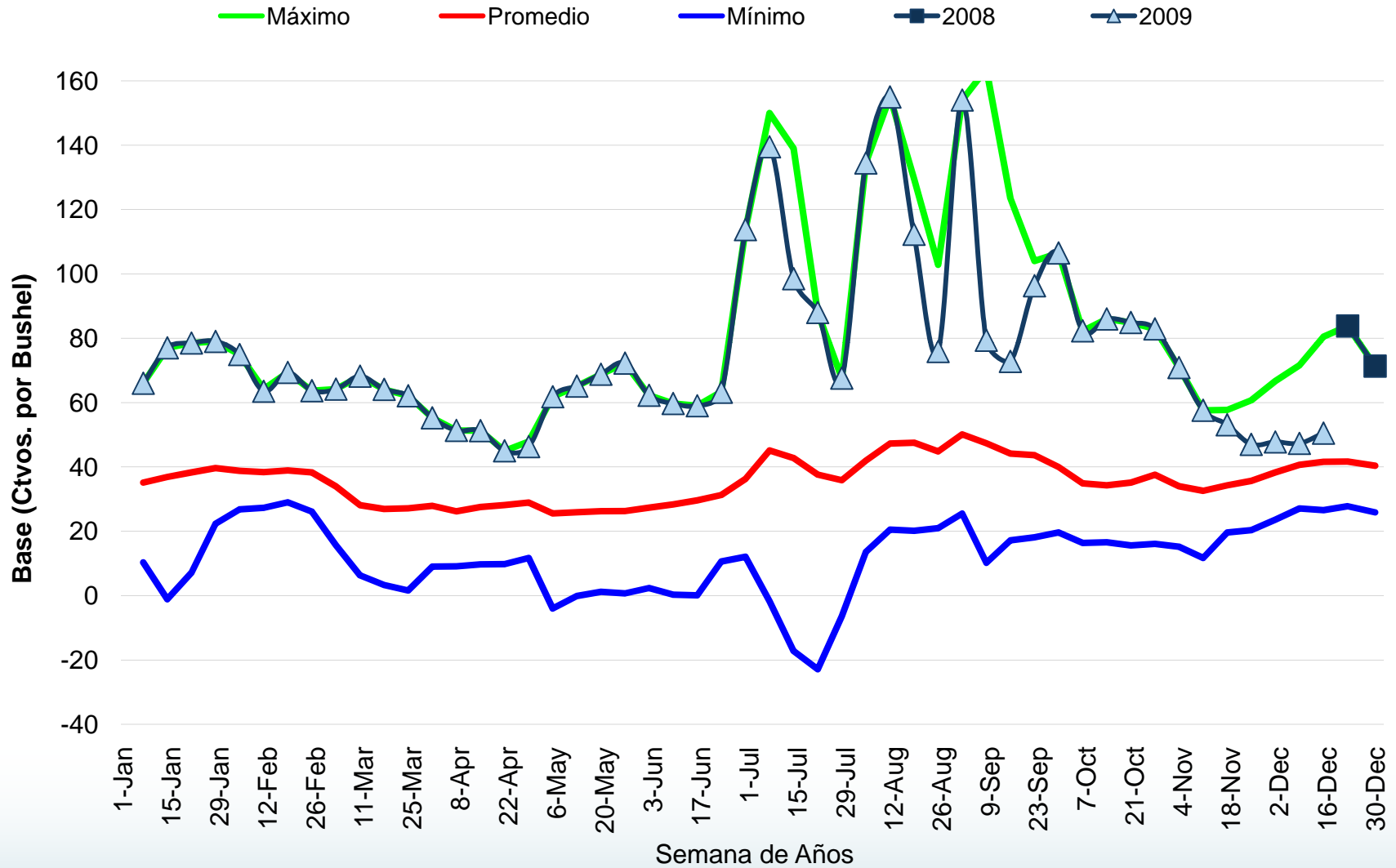
semana	Maíz: Base a Golfo semana	year	year																												Promedio	Mínimo	Máximo
			1989	1990	1991	1992	1993	1994	1995	1996	1997	1998	1999	2000	2001	2002	2003	2004	2005	2006	2007	2008	2009										
7-Jan	1	23.38	35.3	28.1	19.6	20.7	14.1	36.3	33.3	32.4	20.2	30.6	23.2	22.8	24.9	30.1	33.3	40.7	46.1	25.7	31.5	35.9	28.95	14.08	46.13								
14-Jan	2	22.55	31.4	32.7	19.6	20.4	19	39.1	34.7	34.5	20.4	31.3	17.2	21.7	24	32.4	28.9	43.9	48.3	30.4	25.9	43.5	29.60	17.15	46.30								
21-Jan	3	21.31	26.9	30.7	18.9	23	23.2	41.8	38	34.5	19.7	30.5	18.2	20.4	22.4	35.1	21.8	49	49.6	27.4	34.3	51	30.35	18.19	51.00								
28-Jan	4	22.55	26.2	29.8	21.4	21.9	24.8	39.2	41.4	33.1	18	30.8	21.1	18.8	22.7	33	24.8	43	47	28.9	45.1	53.8	30.81	18.00	53.80								
4-Feb	5	24.45	27.6	30.6	23.6	22.7	24.4	37.6	46.1	33.6	17	27.4	19.9	21	23.9	33.5	30.4	37	46.6	31.1	42.4	56.6	31.29	17.00	56.58								
11-Feb	6	27.88	28	27.3	22.6	25.6	22.1	36.9	44.4	28.8	16.5	26	21.4	23.6	25.2	31.3	29.6	34.7	48.9	41.8	38.9	53.4	31.26	16.50	53.40								
18-Feb	7	28.65	28.9	29.2	23.1	30.2	22.6	36.1	44.9	25.5	19	25.3	23	24.1	26.2	31.2	29.5	41.5	48.9	39.6	46.3	52.5	32.29	19.00	52.50								
25-Feb	8	31.38	28.6	30.8	26.7	31.7	22.8	36.1	43.1	25.9	22.9	24	22.5	24.1	26.9	34.1	28.1	44.6	48.3	37.4	49.5	48.7	32.86	22.50	49.50								
3-Mar	9	29.05	27.5	29.8	26.2	22.3	19.5	34.8	43.3	27.8	14.3	19.2	19.5	17	24.4	35.5	23.6	38.6	43.7	33.7	40.5	43.2	29.20	14.28	43.70								
10-Mar	10	23.6	23.8	23.2	22.5	24.2	18.2	32.1	43.8	23.1	16.8	20.3	13.6	13.9	20	35.1	22.7	36.1	38.8	28.9	37.5	40	26.56	13.60	43.80								
17-Mar	11	22.25	22.6	23.7	24.9	24.4	19.6	31.4	44	23.3	19.1	21.8	10.8	15.7	21.3	34.9	22.2	37.1	36.8	28	35.8	37.1	26.50	10.75	44.00								
24-Mar	12	20.88	22.3	23.9	24.8	22.5	21.5	33	46.1	20.7	19.9	21.9	8.85	18.2	22.1	33.2	18	36.6	40.2	20.9	44.5	33.3	26.33	8.85	46.10								
31-Mar	13	22.6	24.5	22.7	24.4	25.2	22.3	34.5	44.4	17.1	18.3	22.7	9.13	22.6	23.3	31.8	20.9	35.6	39.1	16.1	50.6	37.1	26.90	9.13	50.63								
7-Apr	14	23.75	25.9	22.8	24.4	26.8	22.5	32.4	35.7	15.2	18.7	20	11.6	16.2	22.6	28.9	18.2	36.3	36.9	22.5	39.5	36.8	25.60	11.63	39.50								
14-Apr	15	25.2	28.2	23.7	24.3	25.6	21.7	26.8	31.2	17.5	21.3	21.2	15.4	16.2	22.9	29	23.2	37.4	37	23.3	36	40	26.13	15.38	40.00								
21-Apr	16	24.9	28.9	24.9	24.4	27.2	21.5	29.2	24.5	18.1	23.8	20.6	17	16.4	23.1	28.7	25.4	37.2	37	26.5	29.8	41.6	26.21	16.40	41.60								
28-Apr	17	25.1	26.4	26.3	23.5	27	19.4	29.6	15.4	18	23	21	16.9	18	21.5	29	25.3	36.4	37.3	30.3	29.5	44.3	25.85	15.35	44.30								
5-May	18	25.9	22.8	19.9	18.4	23.2	17.2	25.6	30.1	18.7	15.9	17	3.95	11.3	19.5	28.9	22.6	29.3	37.7	24.5	20.8	37.6	22.40	3.95	37.70								
12-May	19	27.95	24	19.1	18.6	22.5	16.6	26.3	38	19.8	19.5	15.3	2.9	12.7	19.8	28.9	24.1	31.2	40.1	24.5	18	35.8	23.10	2.90	40.05								
19-May	20	27.7	23.6	18.6	17.7	21.4	15.3	23.5	39.1	21.2	21.7	15.1	3	16.9	21.4	28	27	32.1	30.9	30.8	13.4	34.6	22.98	3.00	39.10								
26-May	21	28.3	22	19.8	20.5	20.4	12.5	20.9	36	20.5	23.3	15.3	2.95	16.7	22.5	28.4	29.8	29.1	33.8	39	10.1	34.3	23.14	2.95	39.00								
2-Jun	22	31.19	22.9	22.9	22.4	21.3	14.4	22.3	34.3	21.4	23.5	16.1	5.06	16.1	22.5	30.2	29.1	27.4	33.1	46.4	18.2	37.3	24.65	5.06	46.38								
9-Jun	23	29.65	22.9	22.4	23.3	18.1	16.8	26.5	35.1	22.6	22.5	17.9	3.8	15.4	24	31.4	26.4	26.8	36.1	39.9	28.6	40	25.23	3.80	40.00								
16-Jun	24	28.6	20	24.8	23.9	14.6	17.3	30.8	34.9	21.3	22.4	20.3	5	16.2	24.7	32.1	25.9	23.1	38.1	34.5	33.8	45.8	25.61	5.00	45.80								
23-Jun	25	23.9	17.9	28.4	25.3	15.3	17.4	34	29.9	19.2	22	20.3	6.1	20.8	25.6	34.1	26.4	25.7	41.3	36	33.3	43.8	26.01	6.10	43.80								
30-Jun	26	25.05	17.3	28.2	26.6	20.4	20.1	37.9	20.3	17.1	22.5	16.8	5.83	22.4	25	33	26.7	26.5	46	40.8	29.9	43.1	26.25	5.83	46.00								
7-Jul	27	29.17	18.7	31.7	26.5	16.3	26.3	33.6	132	22.7	21.2	17	1.25	15.4	17.1	38.6	25.3	24.2	46.7	43.1	23.3	48.3	31.35	1.25	132.25								
14-Jul	28	27.05	22.4	35.8	28.2	18	28.1	35.1	136	23.6	24.1	17.4	9	11.2	17.8	38.5	25.5	27.6	47.4	43.3	25.3	59.7	33.34	9.00	135.50								
21-Jul	29	27.3	23.8	35.8	26.9	20.9	26.9	32.6	98.7	23.8	25	15.7	7.65	14.4	18.3	34.4	25.3	32.6	43.9	42.6	27.9	63.1	31.77	7.65	98.70								
28-Jul	30	26.25	26	29.7	27.6	16.6	26.2	37.2	98.2	23.7	22.5	12.8	5.05	16.9	16.7	32.4	32.2	28	45	45.5	30.2	58.5	31.28	5.05	98.20								
4-Aug	31	26.45	26.2	26.1	27.5	16.3	24.9	36.1	115	22.5	18.6	9.45	5.5	18.7	16.8	32.2	37.3	28.2	50	46.2	36.2	55.4	32.14	5.50	114.75								
11-Aug	32	24.75	24.9	30.1	28.9	14.3	23.2	38	122	22.4	20.1	6.8	8.4	18.6	17.8	34.2	40.7	36.2	59.8	52.4	45.2	57.7	34.57	6.80	122.00								
18-Aug	33	26.45	26.8	29.3	27.9	16.9	24.1	40.9	135	22.9	17.6	2.1	11.9	20.4	17.2	34.5	39.6	36.9	67.4	56.4	44.7	61.3	36.20	2.10	135.30								
25-Aug	34	27.5	27.5	28.7	30.6	20.8	25.9	37.5	112	23.6	16.3	6.5	18.1	17.8	22.2	37.1	40.3	38	64.2	57.8	52.7	61.8	36.52	6.50	112.40								
1-Sep	35	29.5	32.9	31.5	30.9	16.6	26.2	36.2	53.2	24.7	18	1.8	18.8	19.4	23.6	35	33.6	69.1	46.3	43.5	55	32.28	1.80	69.05									
8-Sep	36	27.75	34.9	26.9	31.2	14.3	26.8	33.8	56.6	24.8	11	4.25	12.4	12	16.4	31.4	32.4	67.8	47.9	42.4	54.4	30.46	4.25	67.81									
15-Sep	37	32.85	30.4	26.4	31.9	19.8	25.9	28.8	42.2	22.6	9.4	4.1	16.1	8.33	15.7	30.8	33.9	45.9	69.1	43.6	48.2	56.3	30.56	4.10	69.10								
22-Sep	38	30.2	29.5	23.4	30.2	17.2	28.8	26.2	46.1	23	7.2	6.25	16	8.95	17.3	31.5	30	38.4	58.3	44.8	47.6	61	29.70	7.20	61.00								
29-Sep	39	26.5	26.4	23.2	32.1	16.6	30	25.3	49.8	25.7	11.3	13.1	15.4	12.5	20.3	33.8	24.9	34.6	58.7	52	43.4	59.4	30.23	11.33	59.38								
6-Oct	40	26.25	26.3	27.7	28	17.5	29.5	28.8	45.2	26.4	16.5	12.1	16.1	8.85	22.8	35	27.8	44.5	56.9	58.4	46.8	52.8	31.14	8.85	58.40								
13-Oct	41	27.65	25.8	25.6	30.6	19.9	28.5	30.8	44.1	25.5	20	13.5	11.4	12.4	22.9	37.8	31.3	59.6	44.1	59	50.6	54.4	32.15	11.40	59.60								
20-Oct	42	31	24	27.9	32.5	20.2	28.9	36.8	45.2	24.5	25.8	18.2	13.7	18.7	25.2	38.2	34.8	60	45.5	60.8	55.5	50.2	34.16	13.70	60.75								
27-Oct	43	34.3	22.9	27.1	32.4	22.7	25.7	39.5	41.6	23.3	27.5	20.3	18.3	20.4	29.8	42.2	34.1	59.5	57.4	59.1	52.4	53.4	35.41	18.30	59.50								
3-Nov	44	35.2	24.2	29.3	32.7	23.5	25.7	38.8	33.2	19.9	29.1	23	14.1	20.9	33	43	36.7	49.9	59.3	56.3	50.5	49.5	34.65	14.10	59.30								
10-Nov	45	36.81	26	28.6	30.4	20.2	24.3	36.3	30.1	19.8	26.3	20.7	8.4	22.4	32.8	37.5	39	48.2	60.9	57	46.4	46.6	33.26	8.40	60.90								
17-Nov	46	39.15	27.2	26.7	28	19.7	26	34.6	29.5	22.6	31.1	20.4	15.6	25	34.3	36.1	40.4	51.4	62.3	57.8	35	47.5	33.81	15.60	62.30								
24-Nov	47	36.33	29.1	27.8	31.1	21.7	31.1	31.4	27.4	23.1	29.1	21.3	19.8	23.8	34.2	36.8	40.1	52.3	62.8	49.7	29.2	44.9	33.46	19.84	62.83								
1-Dec	48	34.95	30.8	25.6	23.5	17.8	32.7	33.5	27.4	21.8	24.3	17.5	21	25.6	34.1	34.9	33	52.3	55.4	35.5	22.3	27.2	30.04	17.50	55.35								
8-Dec	49	32.25	23.1	19.8	22.7	11.7	31	25.8	30.5	17	17.7	17.2	22.5	25.6	32.7	37	33.3	52	42.3	32.5	27.2	17.1	27.16	11.65	52.00								
15-Dec	50	36.45	21.1	21.4	18.2	11.7	32.1	25.6	31.7	14.4	18.7	19.3	26.7	25.4	33.7	38.8	38.3	56.1	32.4	28.5	36	15.7	27.71	11.65	56.10								
22-Dec	51	39.55	24.3	20.4	17.1	10.8	31.3	26	35.1	13.9	22	23.8	35.1	28.1	31.6	35	43.4	55.2	24.4	26.4	40.9	29.21	10.81	55.20									
30-Dec	52	39.08	26.6	20																													

Frijol Soya: Futuro Cercano, Precio de Exportación en Golfo, y Base

Enero 1989 - Diciembre 17, 2009



Precio de Exportación en Golfo - Base de Futuro Cercano de Frijol Soya



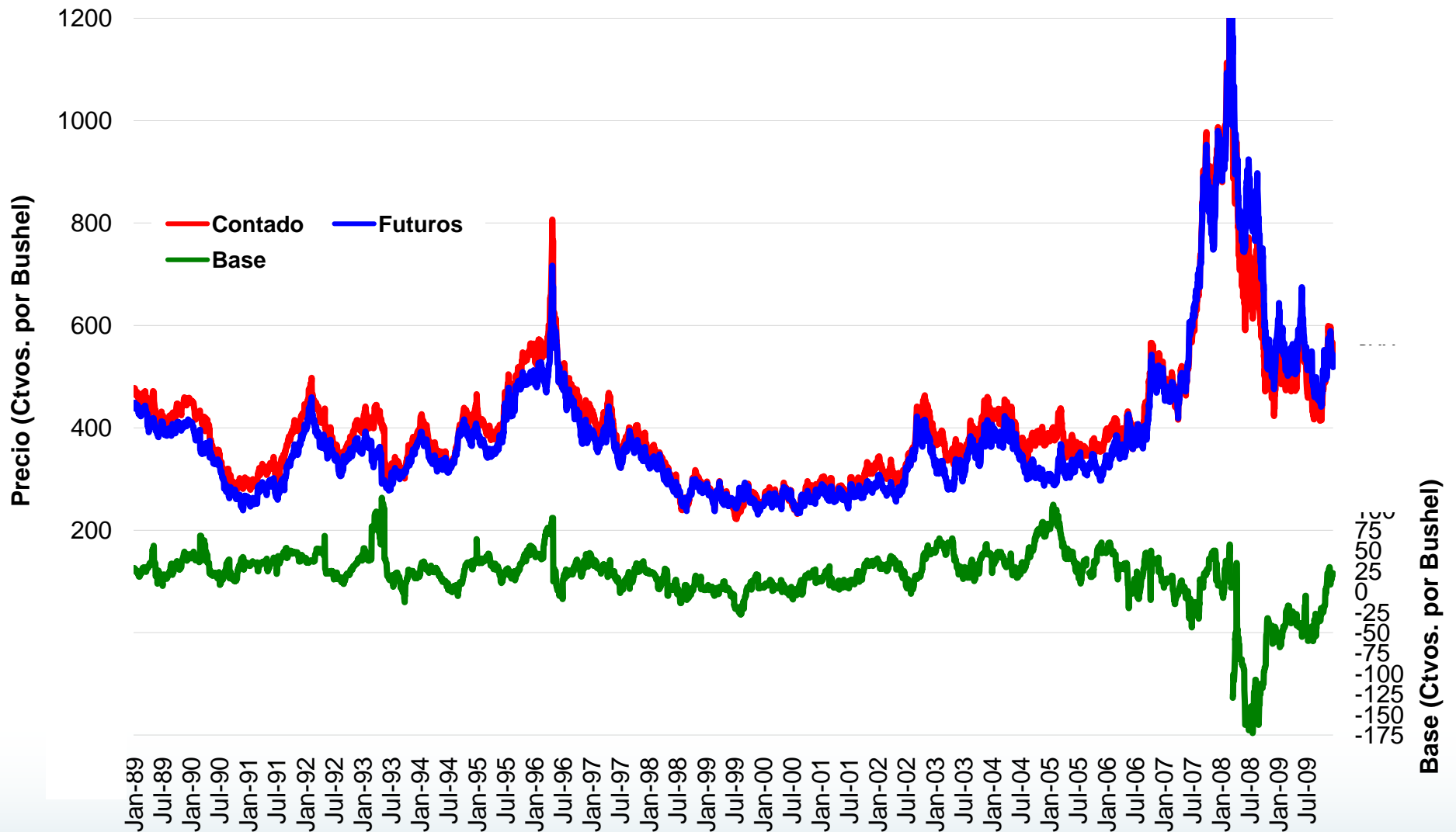
Frijol Soya: Base a Golfo

Frijol Soya: Base a Golfo

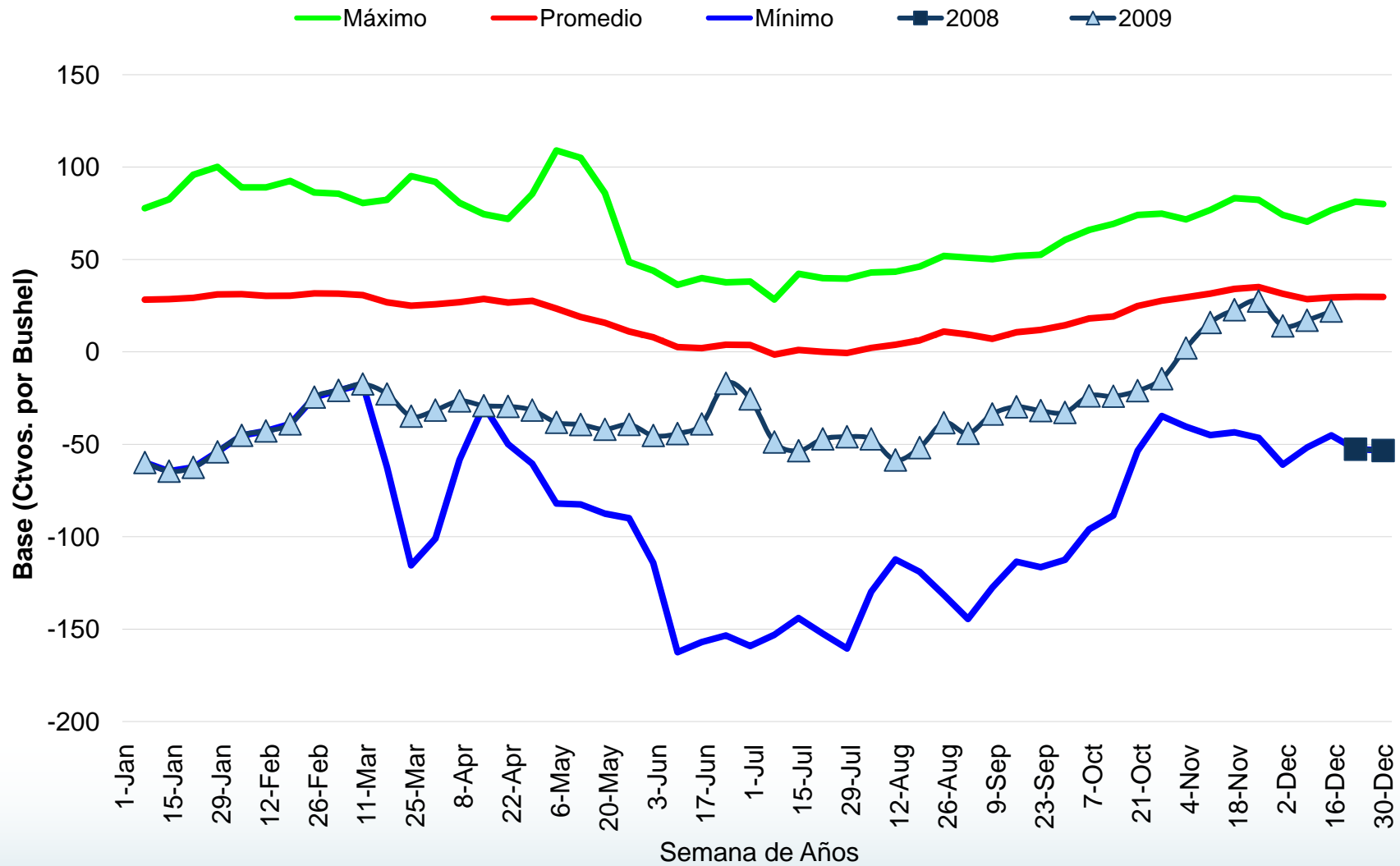
semana	Frijol Soya: Base a Golfo semana	year																			Promedio	Minimo	Maximo		
		1989	1990	1991	1992	1993	1994	1995	1996	1997	1998	1999	2000	2001	2002	2003	2004	2005	2006	2007				2008	2009
7-Jan	1	18.25	37.9	25	32.1	25.9	23.6	37.4	47.1	37.6	25.4	34.3	26.8	32.6	40.1	43.4	37.2	65.2	39	32.8	10.33	66	35.14	10.33	66.00
14-Jan	2	19.2	35	28.3	29.8	27.9	26.8	47.3	51.6	38.5	28.2	34.6	27.8	35.6	37.9	47.9	35.9	76.6	46.7	23.4	-1.13	77	36.89	-1.13	77.00
21-Jan	3	21.81	34.3	30.5	28.1	27.3	29.3	49	50.9	39.4	31.3	34	30.8	40.8	34.6	50.6	27.8	78.5	51.8	28.4	7.125	78.5	38.31	7.13	78.50
28-Jan	4	22.35	34.2	29.5	28.2	29.9	31.7	48.5	43.4	37.7	31.7	33.7	28.8	41.8	36.4	49.3	33.6	76.8	53.1	25.3	38	79	39.66	22.35	79.00
4-Feb	5	26.8	34.7	33.1	29.3	29.1	30.9	43.6	43.7	38.3	28.6	31.9	27.8	36.9	36.8	47.5	39.4	63.2	48.4	28	42	74.9	38.80	26.80	74.92
11-Feb	6	32.94	37.1	34.4	30	28.4	30.4	42	44.2	36.2	27.5	30.8	27.3	37.8	35.7	41	42.2	64.2	53.1	32	35.7	63.5	38.40	27.30	64.20
18-Feb	7	39.5	37	34.4	29	29.9	31.8	43.1	42.9	34.1	30.4	29.6	29.7	38.9	34.3	40.1	37.8	56.6	55.9	33.4	39.38	69.4	38.89	29.00	69.38
25-Feb	8	44.44	37.6	33.9	31.2	30	32.5	43.5	38.6	34.6	29.6	29.7	31	41.7	34.2	40.5	31.8	54.1	55.6	26.1	40.13	63.7	38.30	26.10	63.70
3-Mar	9	35.5	34.6	35.4	32.9	24.3	28.4	36.7	39.7	35.3	24.1	20.1	26.7	36.4	30.3	40	31.3	43.5	43.2	15.7	35.28	64.2	33.97	15.69	64.17
10-Mar	10	31.65	22.4	22.5	22.1	25	27.6	30.6	33.8	29.8	27.9	20.1	18.8	26	22.4	40	26	38.5	41.3	9.7	6.3	68.2	28.11	6.30	68.20
17-Mar	11	30.75	19.8	24.2	23.6	23.8	28.2	32.8	36.3	22.8	26.9	19.8	16.2	27.5	20.4	40.4	31.6	32.5	35.5	3.3	5.4	64.1	26.93	3.30	64.10
24-Mar	12	29.13	19.6	28.2	26.3	21.3	28.9	33.1	36.3	22.7	25.8	19.3	12.5	30.4	22	35.4	28.3	30.2	35.9	1.6	20.63	62.1	27.11	1.60	62.10
31-Mar	13	27.75	19.5	28.9	30.2	21.8	28.6	36.1	35.1	21.1	28.1	14.8	9.75	35.3	24.3	32.8	33.1	30.8	33.4	9	30.5	55.3	27.90	9.00	55.25
7-Apr	14	23.9	19.9	28.6	31.6	22.3	27.2	34.3	32	17.6	27.2	13.5	9.08	27.5	23.5	33.1	29.4	31.1	34.2	13.6	18.92	51.3	26.17	9.08	51.33
14-Apr	15	26.65	20.8	30.6	31	23.2	26	33.3	27.7	23.5	27.7	17.2	12.8	26.5	26.7	29.8	26.3	34	37.9	9.7	35.5	51.3	27.52	9.70	51.25
21-Apr	16	31.85	23.8	32.8	27.9	25.4	26.7	33.4	24.2	23.5	27.4	18.3	14.3	29.3	26.2	27.3	25.8	38.4	41	9.8	38.6	45	28.13	9.80	45.00
28-Apr	17	35.65	25.4	31.7	27.8	25.3	25.6	33.1	20.9	24.1	23.3	19.1	19.5	30	25.6	24.4	26.4	41.5	42.1	11.7	47.9	46.3	28.91	11.70	47.90
5-May	18	24.6	12.1	28.6	25.1	24.1	24.4	22.3	20.6	25.9	29.8	13.5	10.6	31	25.6	22.7	35.6	38.9	42	-4	21.55	61.8	25.54	-4.00	61.80
12-May	19	31.7	7.2	27.8	23.4	22.6	25.1	20.1	19.4	24.1	25	15.2	8.2	34.7	26.4	23.4	48.6	40.7	42.9	-0.1	12.1	65.1	25.92	-0.10	65.10
19-May	20	31.35	9.1	28.8	18	23	26.3	20.9	21.6	24.1	25.6	14.5	7.75	42.9	34.6	21.6	52.5	38.8	27.7	1.2	11.7	68.8	26.22	1.20	68.80
26-May	21	37.15	8.8	26.9	18.3	22.3	24	22.9	20.1	25.3	27.1	17.3	10.7	35.8	34.4	19.8	52.1	35.5	28.4	0.7	12.63	72.3	26.30	0.70	72.25
2-Jun	22	37.75	8.94	28.5	21.8	23.1	20.8	23	20.8	29.1	28.7	19	19.4	33.3	33.7	22.2	46.1	35.7	31.9	2.38	25.42	62.3	27.32	2.38	62.25
9-Jun	23	28.5	17.1	29.7	20.5	21.6	21.2	25.6	18.1	26.6	30.3	23	20.7	33.3	36.7	23.5	52.7	34.2	33	0.3	37.6	59.7	28.36	0.30	59.70
16-Jun	24	28.2	19.3	31.8	21	21.1	19.2	29.5	20	26.8	31.1	26.3	29.3	33.9	32.8	24.3	58.4	28.4	33.9	0.1	48	59	29.62	0.10	59.00
23-Jun	25	19.45	21.9	34.7	27.4	20.4	19.4	33.7	23.8	18.9	29.9	27.7	31.9	32.9	33.8	31.7	51.2	22	39	10.6	63.3	63.2	31.26	10.60	63.30
30-Jun	26	14.6	22.6	37.2	29.4	21.9	19.5	39.4	24.9	20.5	27.9	26.7	33	33.9	35.6	34.3	79.1	25.8	41.5	12.1	68	114	36.26	12.08	113.75
7-Jul	27	43.33	15.7	35.9	29.5	18.9	25.2	38.5	24.7	56.1	37	29.1	34.9	41.5	47.6	43.8	150	27.8	45.8	-1.8	64.38	140	45.11	-1.75	150.00
14-Jul	28	35.45	17.2	38.8	30.2	23.9	29.6	40.4	26.5	56.4	39.6	30.6	39.5	34.3	49.5	45	139	30.9	46.5	-17	63.8	98.5	42.78	-17.20	139.00
21-Jul	29	37.95	25.1	38	31.4	24.1	24.5	36.5	26	47	37.2	32.3	42.5	32.5	41	40.4	58	39.1	50.1	-23	60.9	88	37.60	-22.90	88.00
28-Jul	30	43	26.5	33.9	33.1	24.8	23.3	40.8	26	39.9	32.8	32.6	42.2	30.8	33.5	37.4	43	40.1	49.8	-6.4	58.7	67.6	35.87	-6.40	67.60
4-Aug	31	52.05	28.6	30.2	35.9	24.9	29.3	43.4	34.3	59.9	38	28.8	38	30.2	31.8	39.4	41.5	34.8	54.1	13.6	58.6	134	41.98	13.55	134.46
11-Aug	32	48.05	33.4	29.6	36.3	26.5	25.3	47.9	41.1	101	40.9	31.3	37.6	34.4	33.3	46	43.6	37.7	53.2	20.5	70.8	155	47.30	20.50	155.00
18-Aug	33	55.95	34.1	35.6	34.4	26.8	20.2	49.2	36.8	130	43.6	30.7	35.6	37.1	35.9	45.1	41.9	38.5	53.1	29.8	71.95	112	47.51	20.15	129.55
25-Aug	34	49.15	31.6	36.1	34.6	30.8	21	49.7	35.3	103	40.8	32.8	37.3	34.6	34	40.8	45.2	41.1	54	29.8	84	75.9	44.80	20.95	102.85
1-Sep	35	50.1	29.8	40.1	37.6	30	25.5	48.9	37	120	44.9	28.1	34.4	34.9	30.6	44.7	45.4		59.2	29.1	78.5	154	50.12	25.50	154.04
8-Sep	36	46.56	20.9	30.3	36.8	30.4	30.4	43.1	54.4	164	50.6	24.3	24.9	32.9	35	52.3	39.9		63.6	10.2	77.5	79.4	47.35	10.20	163.75
15-Sep	37	51.85	17.2	33.3	32.7	35.2	28.1	42.3	56.3	124	43.2	23.9	21.2	32.7	32.8	40.7	41.4	39.4	68.7	24	66.2	72.8	44.15	17.20	123.50
22-Sep	38	40.9	18.5	30.8	30.5	29.8	26.9	34.1	47.3	104	36.5	21.9	18.1	33.4	35.5	37	43.3	42.6	65.4	35.5	88.5	96.3	43.65	18.10	104.00
29-Sep	39	28.95	19.8	33.9	32	27.3	25	33.9	46.9	56.8	28.2	19.6	20.3	29	35.1	39.5	42.1	42.3	63.8	34.3	74.38	107	39.98	19.60	106.50
6-Oct	40	26.55	18.3	34.1	28.8	22.1	25.1	33.9	34.1	41.2	30.9	16.4	17.7	26.3	30.7	34	38.7	43.3	58.6	36	53.8	82.3	34.89	16.35	82.30
13-Oct	41	27.85	21.2	36.5	27.9	23	24.9	35.6	35.6	37	26.1	16.6	18.3	27.8	28.8	36	38.1	43.8	39.3	26.5	63.2	86	34.27	16.58	86.00
20-Oct	42	29.55	21.2	37	25.8	22.5	26.6	37.1	36.4	34.1	28.3	15.6	19.9	32.2	31.3	36.9	50	38.6	46	22.8	61.2	84.9	35.12	15.60	84.90
27-Oct	43	36.2	21.2	39.8	27.5	24.7	27.6	39.4	39.8	29.4	28.2	16.1	25.3	29.2	33.6	38.5	57.6	38.6	59.9	31.2	62.2	82.9	37.56	16.10	82.90
3-Nov	44	34.3	19.5	38.4	25.3	17.1	21.2	39.8	38.6	26.2	25.4	15.2	19.9	25.4	38.3	35	56.7	39.9	49.4	27.5	49.92	70.9	33.99	15.20	70.88
10-Nov	45	28.88	11.7	35.8	22.9	16.4	23.8	36.4	38	23.4	23.5	17.5	14.8	24.4	42.5	28.5	54.7	44.2	49.3	34	55.7	57.6	32.56	11.69	57.60
17-Nov	46	30.9	19.7	34	23	19.6	30.5	35.1	37.3	27.2	25.7	20.3	21.2	27.3	40.5	35.2	54.9	50.5	44.8	31.1	57.7	53.1	34.26	19.60	57.70
24-Nov	47	32	22.1	32.7	20.4	21.2	32	37.7	37.7	26.7	28.1	23.9	21.1	32.5	38.9	39.4	55.8	53	50	35.8	60.7	47	35.65	20.35	60.70
1-Dec	48	32.85	26.7	34.8	28	24.6	36.3	37.9	37.8	26.2	27.5	24.9	23.6	34.7	41.1	39.6	56.3	61.3	55.8	39.8	66.67	47.8	38.29	23.60	66.67
8-Dec	49	36.7	27.9	34.8	30.1	27.4	40.8	40.1	35.9	28.6	28.5	27.1	31.5	37.8	41.6	40.5	61.1	69	58.4	37.5	71.6	47.3	40.66	27.10	71.60
15-Dec	50	43.4	30.1	32.9	26.6	30.8	42.4	42.4	36.3	29.6	29.6	29.3	32.4	37	41.6	39.8	66.7	68.9	51.2	31.8	80.5	50.5	41.59	26.55	80.50
22-Dec	51	50.1	29.2	34.9	28.3	30.9	41.4	40	39	27.8	31.6	31.6	39.1	38.3	41.5	36.5	68.6	61	41.8	38	83.8		41.66	27.80	83.80

Trigo: Futuro Cercano, Precio de Exportación en Golfo, y Base

Enero 1989 - Diciembre 17, 2009



Precio de Exportación en Golfo - Base de Futuro Cercano de Trigo



Trigo: Base a Golfo

Trigo: Base a Golfo

semana	Trigo: Base a Golfo semana	year																			Promedio	Mínimo	Máximo		
		1989	1990	1991	1992	1993	1994	1995	1996	1997	1998	1999	2000	2001	2002	2003	2004	2005	2006	2007				2008	2009
7-Jan	1	28.25	41.2	34.6	40.5	48.4	27.3	38.6	48	39.6	22.2	3.63	5.6	13.8	36.9	48.4	32.3	77.7	50.6	8.5	8.333	-59.9	28.30	-59.88	77.70
14-Jan	2	26.75	44.3	33.1	35.8	52.1	34	36.1	42.9	37.1	22.8	5.5	7.4	13.7	35.3	53.1	34.2	82.5	55.2	12.5	0	-64.6	28.55	-64.55	82.50
21-Jan	3	24.94	47.8	32.4	36.7	47.9	34.6	35.6	43.8	33.4	23.4	4.5	9.5	16.1	28.8	59.3	35.5	95.9	59.3	13.9	-5	-62.5	29.31	-62.50	95.88
28-Jan	4	23.85	43.3	34.9	36.2	42.7	35.1	38.7	45	37	22.7	5	9.65	19.2	29.8	58.4	38.5	100	57.3	15.1	16	-54.1	31.16	-54.10	100.10
4-Feb	5	20.8	39.9	36.4	37.5	38.7	30.8	38.7	46	33.9	21.7	4.4	8.9	22.3	30.3	61.2	45.8	89	50.9	12.8	31.5	-45.2	31.24	-45.17	89.00
11-Feb	6	19.13	42.9	35.3	37.6	37.9	27.9	38.9	43.7	29.1	20.1	5.3	11.2	23.1	30.4	57.4	48.1	89	47	13.5	23	-42.8	30.36	-42.80	89.00
18-Feb	7	21.7	40	34.5	37.4	39.3	27.6	37.9	40.6	28.8	17	-1.1	13.1	26	30.8	59.3	43	92.5	48.1	16	25	-39	30.39	-39.00	92.50
25-Feb	8	24.81	38.7	33.6	37.3	39.8	26	38.6	40.9	27.1	14.8	-1.2	12.5	27.1	32.4	58.4	44.2	86.3	45.3	18.7	45.63	-24.5	31.73	-24.50	86.25
3-Mar	9	28.5	44.9	34.3	38.2	79.1	25.7	41.6	44.2	26.3	5	-2.5	5.2	21.4	30.3	56.3	43.6	85.6	37.6	5.38	33.4	-20.8	31.58	-20.83	85.63
10-Mar	10	29.05	67.2	26.8	45.8	76.1	30.1	42.7	60.2	27.8	3.5	1.4	4.35	16.7	26.7	50.2	43.7	80.6	28.9	-4.6	6.25	-17.4	30.76	-17.40	80.60
17-Mar	11	27.45	58	32.2	50.7	82.3	29	45.6	68.3	31.2	5.8	-1.2	5.7	15.7	32.1	46.3	41.2	71.2	20.1	-13	-62.3	-22.8	26.84	-62.25	82.30
24-Mar	12	25.13	59.1	33.8	50.3	95.2	26.2	44.2	73.7	32.9	9.6	-1.6	5.5	7.9	38.6	54.4	34.1	63	30.4	-6.8	-116	-34.8	25.00	-115.50	95.15
31-Mar	13	29.7	60.1	34.9	49.6	92	24.6	34.5	75.8	29.8	15.4	3.5	4.75	6.3	41.6	58.3	32.5	55	30.3	-3.8	-101	-31.5	25.82	-101.00	92.00
7-Apr	14	30.3	47	35.9	50.3	80.6	25.7	33.8	76.3	27.6	15.3	3.9	5.08	9	36.6	59.3	31.9	55.3	28.5	-2.5	-58.3	-26.5	26.90	-58.25	80.63
14-Apr	15	32.9	46.1	34.8	47.8	74.5	27.7	32.8	72.3	30.6	22	5	5.45	6.25	39.7	58.4	34.4	42.7	31.3	3.3	-16.4	-29.1	28.68	-29.13	74.50
21-Apr	16	32.95	39	36.9	48.9	68.8	27.1	27.8	72	24.1	26.8	9.35	8	4.9	36.6	59.8	36.1	41.3	32.8	8.2	-49.9	-29.5	26.75	-49.90	72.00
28-Apr	17	36.25	35.1	37.7	46.1	63.3	24.6	32.8	85.5	26.6	25.9	11.2	12.9	11.3	36.8	62.4	34	46.3	31.6	13.1	-60.5	-31.5	27.68	-60.45	85.50
5-May	18	51.3	23.6	32.9	52.5	109	19.7	28.2	59	28.4	6.25	4.7	1.6	5.85	30.3	47.2	37	40.4	32.8	2.2	-82	-38.2	23.45	-82.00	109.00
12-May	19	46.7	22.8	27	25.5	105	19.8	28.7	21.5	23.5	4.4	4	7.6	6.6	28.2	41.2	23.5	43.9	33	4.5	-82.5	-39.3	18.93	-82.50	105.00
19-May	20	33.35	20.9	30.2	23.7	86	16.1	28.1	25	23.8	5.1	3.1	6	9.4	30.3	37.5	21.5	45.2	12.6	3.1	-87.5	-41.9	15.78	-87.50	85.95
26-May	21	19.8	21.3	32.8	24.3	39.5	14.5	24.2	11.9	22.9	6.1	2.4	3	9.7	32.8	30.9	25.3	48.6	-4	-3.7	-90	-39.3	11.09	-90.00	48.63
2-Jun	22	16.31	21.4	35.2	22.7	33.7	12.5	18.8	3.2	21.5	4	0.25	-0.8	12	26.7	27	23.8	44	5.38	-1.9	-114	-45.3	7.92	-114.17	44.00
9-Jun	23	16.85	22	36.1	24.1	19.8	12.5	11.2	2.03	16.3	2.6	-4.6	-1.6	9.5	19.4	23.1	18.5	36.3	2.6	-5.1	-163	-44.2	2.61	-162.50	36.30
16-Jun	24	18.6	20.8	39.9	24.7	18.5	11.8	14.5	-1.6	15	6.6	-2.7	-3.4	7	20.5	27.6	18.4	31.6	-0.8	-28	-157	-39	2.03	-157.00	39.90
23-Jun	25	14.55	18.4	37.7	24.1	14.9	7.6	20.4	-2.8	15.3	12.9	-6	0.2	9.2	22.9	23.4	24	27.6	4	-16	-154	-17	3.67	-153.50	37.65
30-Jun	26	17.85	22.6	38.1	20.6	15.8	7.3	21.5	3.25	10.8	11.5	-9.5	4.48	8.7	16.6	25	26.3	30.9	13.8	-21	-159	-25.4	3.78	-159.19	38.05
7-Jul	27	12.58	13.7	28.3	17.5	19.2	2.25	25.4	6.5	1.15	0.05	-20	-7.5	6.88	6.13	18.3	25.8	21.1	13	-18	-153	-48.8	-1.44	-153.13	28.33
14-Jul	28	18.3	12	42.3	17.3	9.15	4.9	26.9	17.9	5.5	-0.1	-21	-6.3	11.9	8.2	27.8	34.6	17.7	14.5	-22	-144	-53.5	1.07	-144.00	42.25
21-Jul	29	19.35	17.4	39.9	21.6	11.4	2.75	27.2	18.2	5.2	-8.5	-20	-0.1	13.3	11.1	26.3	27.8	14.7	-5	-21	-153	-47.1	0.08	-152.50	39.90
28-Jul	30	17.44	15.4	39.6	18.2	20.5	0.08	21.3	23.7	7.2	-13	-21	1.1	13	6.9	20.6	27.7	17.8	-6.3	-17	-161	-45.9	-0.63	-160.50	39.60
4-Aug	31	17.1	21.4	43	16.5	22.4	5.6	22.2	21.8	12.8	-9.3	-23	-3.4	12.6	2.5	18.3	32.6	26.8	0.9	-19	-130	-47.1	2.16	-129.80	43.00
11-Aug	32	20.3	24.4	43.4	16.8	22.2	4.5	16.7	24	14.7	-6.5	-28	0.3	11.6	8.5	19.1	35.5	37.2	9.7	-23	-112	-58.5	3.86	-112.30	43.40
18-Aug	33	22.9	31	46.2	14.1	18.8	4.9	19.5	22.7	16.7	0.9	-21	4	15.5	4.2	28.5	42.1	36	17.4	-22	-119	-51.8	6.24	-119.00	46.15
25-Aug	34	27.1	35	48.4	11.6	15	7.3	23.7	23.6	18.2	7.33	-16	8.7	19.7	11.6	35.8	51.9	35.7	23.4	12.2	-132	-38.3	10.99	-131.50	51.90
1-Sep	35	33.15	37.4	51	13.4	8.25	3.4	22.4	23.4	18.2	7.1	-14	9.25	24.9	17.1	31.7	49.1	31.9	10	-145	-44.1	9.47	-144.50	51.00	
8-Sep	36	22	24.9	44.4	11.7	5.75	6	19.4	23.6	11.6	-8.6	-6.6	-2.3	13.9	18.2	18.2	50.1	45.1	5	-128	-33.6	7.06	-127.50	50.13	
15-Sep	37	26.05	23.2	43.7	15.6	0.7	11.2	21.9	30.3	13.9	-6.9	-1.9	2.3	18.3	18.2	15.6	51.9	22.5	42.9	17	-114	-29.7	10.63	-113.50	51.90
22-Sep	38	30.25	17.4	47.6	20.3	-1.9	9.75	26	33.5	12.2	-3.5	3.35	14.2	16.5	20.1	23.7	52.6	21.6	33.1	22.5	-117	-31.8	11.95	-116.50	52.60
29-Sep	39	32.15	17.6	49.1	21.5	-2.7	11.9	27	37.8	16.9	-2.7	4.8	18	20.9	19	29.9	60.6	19.6	44.2	22.5	-113	-32.8	14.41	-112.50	60.63
6-Oct	40	36.25	14.3	48.5	20.7	11.6	19	32.2	37	24.9	0.4	6	17.7	25.2	21	29.2	66	22.5	43.4	24	-96	-23.8	18.09	-96.00	66.00
13-Oct	41	32.45	13.1	47.5	21.7	15.9	26.1	34	32.4	29.4	2.23	9.8	18.6	31.6	26	25.3	69.3	29.7	22.3	27.5	-88.5	-24	19.15	-88.50	69.30
20-Oct	42	28.5	13.8	47.8	26.9	24.3	31.2	36.1	27.7	33.1	6.2	9.9	21.6	32.5	38.6	37.6	74.1	36.1	35.1	36.3	-53.5	-21	24.89	-53.50	74.10
27-Oct	43	28.25	20.2	47.8	26.9	25.4	33.9	40.7	22.3	28.3	14.6	13.2	18.5	34.6	45.4	41.5	74.8	36.4	38.4	40	-34.7	-14.5	27.70	-34.70	74.80
3-Nov	44	31.15	27	47.6	29.8	23.7	34.9	44.5	21.3	25.4	18.2	13.9	19.3	34.8	43.8	44.6	71.7	46.6	39	42.5	-40.4	2.083	29.58	-40.42	71.67
10-Nov	45	38.81	31.8	47.8	31.3	24	34.9	43.6	26.9	26.3	12.9	15.3	21.4	32	43.4	45.8	76.8	53.4	37.2	47.5	-45	15.9	31.57	-45.00	76.80
17-Nov	46	43.4	35.5	45.7	33	24.7	33.8	48.2	32.5	31.2	9.4	18.7	24.3	34.4	53.7	48.3	83.2	54.6	34	49	-43.5	22.8	34.13	-43.50	83.20
24-Nov	47	48.5	39.6	39.9	34.3	20.6	35	47.8	33.1	34	11.3	20.4	25.5	36.5	51.1	55.6	82.3	56.3	34.7	50	-46.5	27.5	35.11	-46.50	82.25
1-Dec	48	43.8	40.6	37	37	18.6	31.3	49.3	43.9	33.4	9.44	10.8	22.9	35.8	48.3	48.9	74.1	55.9	32.5	35	-61	14.06	31.50	-61.00	74.10
8-Dec	49	39.95	30.3	40.4	39	19.7	32.2	53.1	35.7	27.8	5.5	4.2	12.2	33.4	46.4	46.7	70.5	47.9	26.2	24	-51.7	17.1	28.59	-51.70	70.50
15-Dec	50	40.55	32.1	43.6	40.8	17.8	34.7	55	39.3	25.7	4.7	4.9	14.3	34.5	49.3	47.1	76.7	48	23.5	10.6	-45.1	22.1	29.53	-45.10	76.70
22-Dec	51	44.35	34	40.4	42	20.9	38.6	54	46	23.5	2.4	5.38	12.9	37	50.1	45.9	81.3	50	13.9	7.5	-52.6	29.87	-52.60	81.25	
30-Dec	52	43	34.3	40.3	41.7	18.6	45.1	51.9	43.6	23.6	2.5	6	15.4	38.9	50.3	44	80	49.8	12.6	7.5	-53.3	29.78	-53.33		