

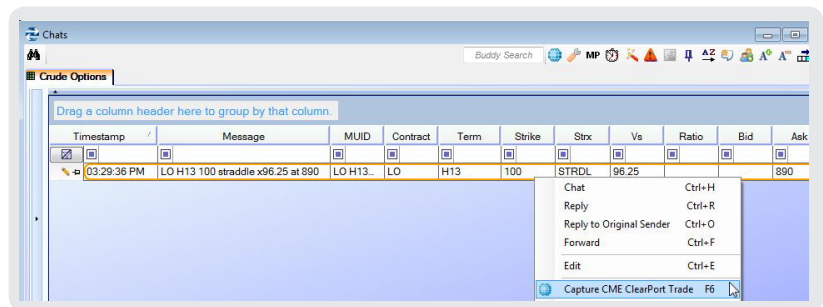
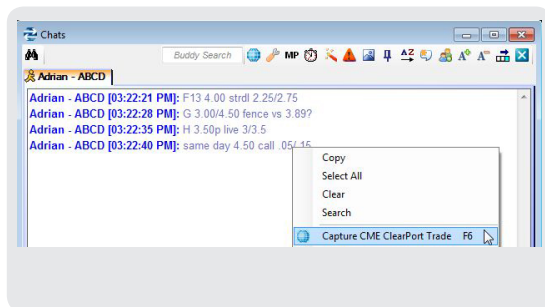
CME Direct Messenger

FROM  CME Group



Click and Clear: Fast Block Trade Entry With CME Direct Messenger

CME Direct Messenger's click and clear functionality allows complex options strategies to be entered in as little as a minute, well below the block reporting requirements. Energy traders and brokers can seamlessly upgrade to CME Direct Messenger from all versions of Pivot instant messaging software to take advantage of this new, time-saving feature.



Messages Are Parsed Into Fields Allowing You To:

- **Consolidate Multiple Legs on One Ticket:** The strategy converter lists all legs, including futures, on a single ticket
- **Clone a Ticket for Multiple Parties:** Just change the Buyer or Seller information and submit

Key Benefits

- **Fast submission of blocks to CME Group for clearing**
- **Significantly reduce the chance of human error**
- **Easier compliance with Exchange rules**
- **Intuitive Blotter:** View all trades and trade details for your firm in an easy-to-read, color-coded blotter
- **Flexible for Any Workflow:** Whether you require deals to be confirmed by colleagues or sent immediately, the Click and Clear functionality is designed to provide the capability while maintaining trade entry speed

Trade Ticket
CME Direct Messenger
CME Group

TRADE ENTRY
Trade Type: Block Date: 1/11/2013 Time: 12:22 STATUS: Trade Status: New

BROKER
Firm: Pivot, Inc. Created By: XZY Trading Group
Buyer Broker: Kate Johnson Seller Broker: Suzan Jones

BUYER
Firm: ABC Investment Firm
Trader: John Smith
NetworkID: abcjsmith
Clearing Firm: - Select -
Clearing Acct: - Select -

SELLER
Firm: XZY Trading Group
Trader: Jane Doe
NetworkID: xzyjdoe
Clearing Firm: DEF Clearing Corp
Clearing Acct: 123456

MARKET STRUCTURE
Product: LN - EUROPEAN NATURAL GAS OPTIONS

Code	Exch	Term	Type	Term	End Term	Strxl	Strike(s)	Ratio	Vs	Qty (lots)	Price
LN	NYMEX	Month		Jan13		- Select -	STRDL	4		50	2.25

Buyer Seller

Code	Exch	Term	Type	Term	End Term	Contract	Strike	Ratio	Side	Qty (lots)	Price
-	LN	NYMEX	Month	Jan13		Put	4	1	BUY	50	
-	LN	NYMEX	Month	Jan13		Call	4	1	BUY	50	
Total:										100	

Add Future
Add Option

To sign up or upgrade today, please e-mail MessengerSales@cmegroup.com.

CME Group is a trademark of CME Group Inc. The Globe Logo, CME, Chicago Mercantile Exchange, Globex, CME Direct and CME Direct Messenger are trademarks of Chicago Mercantile Exchange Inc. ClearPort, New York Mercantile Exchange and NYMEX are registered trademarks of New York Mercantile Exchange, Inc. The information within this fact card has been compiled by CME Group for general purposes only. Although every attempt has been made to ensure the accuracy of the information within this brochure, CME Group assumes no responsibility for any errors or omissions. Additionally, all examples in this brochure are hypothetical situations, used for explanation purposes only, and should not be considered investment advice or the results of actual market experience.

All matters pertaining to rules and specifications herein are made subject to and are superseded by official CME, CBOT and NYMEX rules. Current rules should be consulted in all cases concerning contract specifications.

Futures trading is not suitable for all investors, and involves the risk of loss. Futures are a leveraged investment, and because only a percentage of a contract's value is required to trade, it is possible to lose more than the amount of money deposited for a futures position. Therefore, traders should only use funds that they can afford to lose without affecting their lifestyles. And only a portion of those funds should be devoted to any one trade because they cannot expect to profit on every trade. All examples in this brochure are hypothetical situations, used for explanation purposes only, and should not be considered investment advice or the results of actual market experience.

Copyright © 2013 CME Group. All rights reserved.