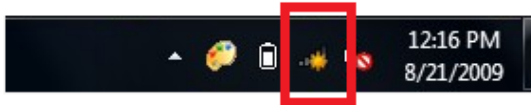


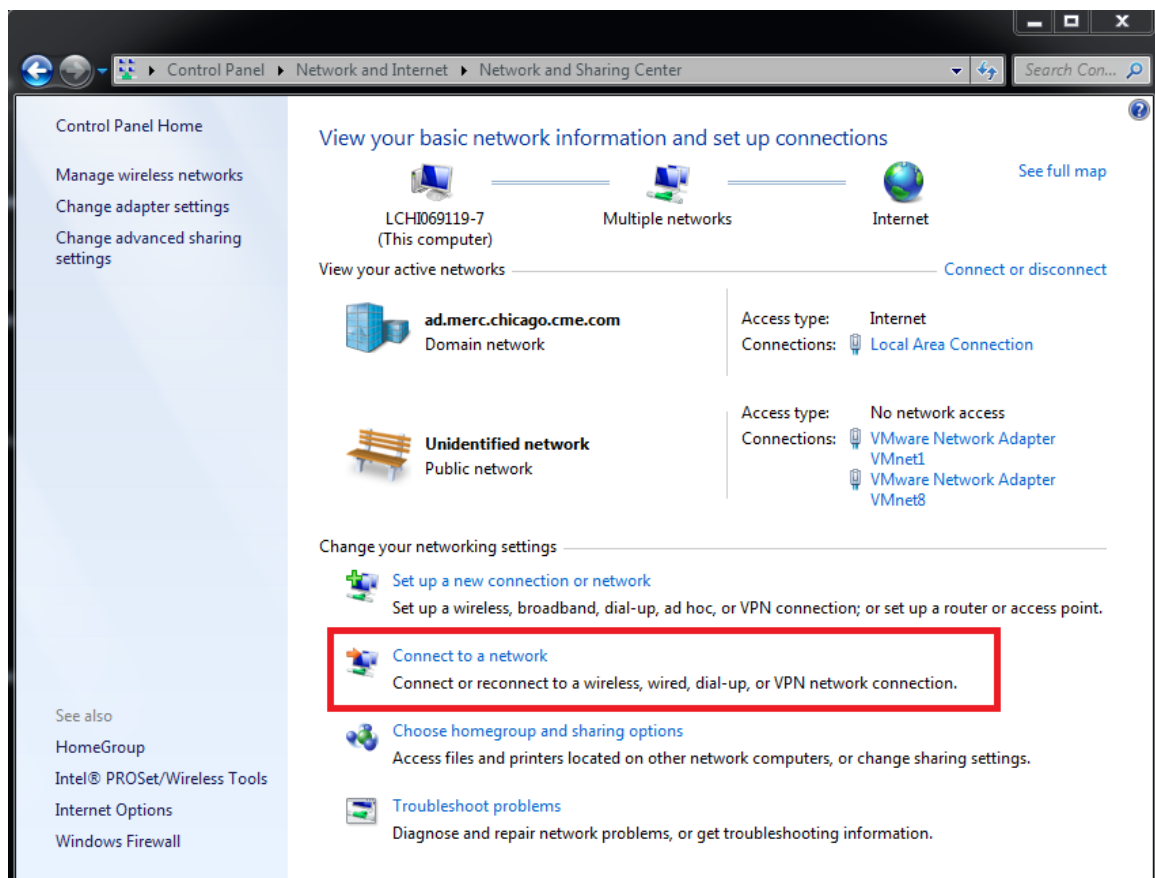
# xguest Instructions – Windows 7/XP

Use the following steps to connect a Windows 7 or Windows XP machine to the xguest wireless network.

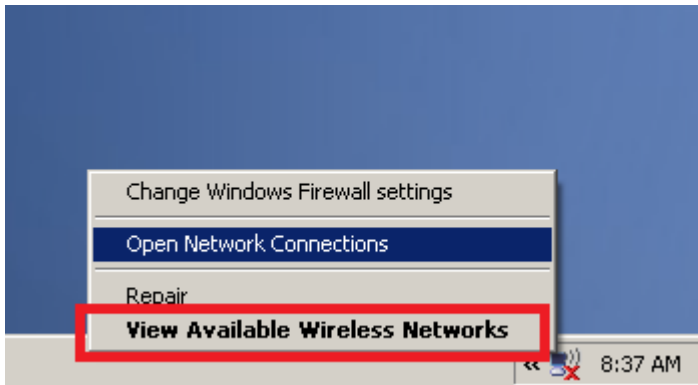
1. Look for the SSID or “name” **xguest** in the list of wireless networks. On **Windows 7**, click the network icon on the bottom right corner of the screen.



**NOTE:** If this icon is not visible click **Start**, enter and search for Network and Sharing Center, then click **Connect to a network**.

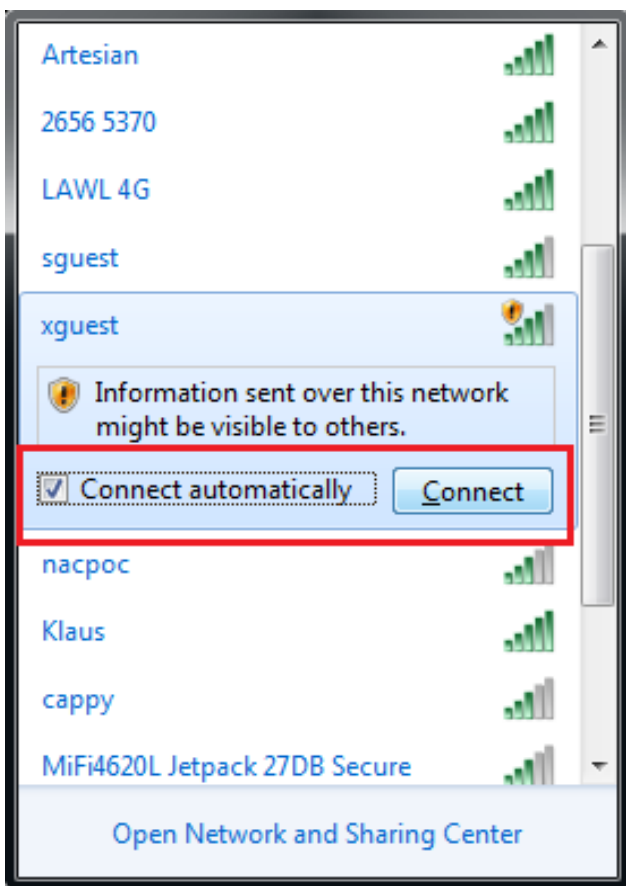


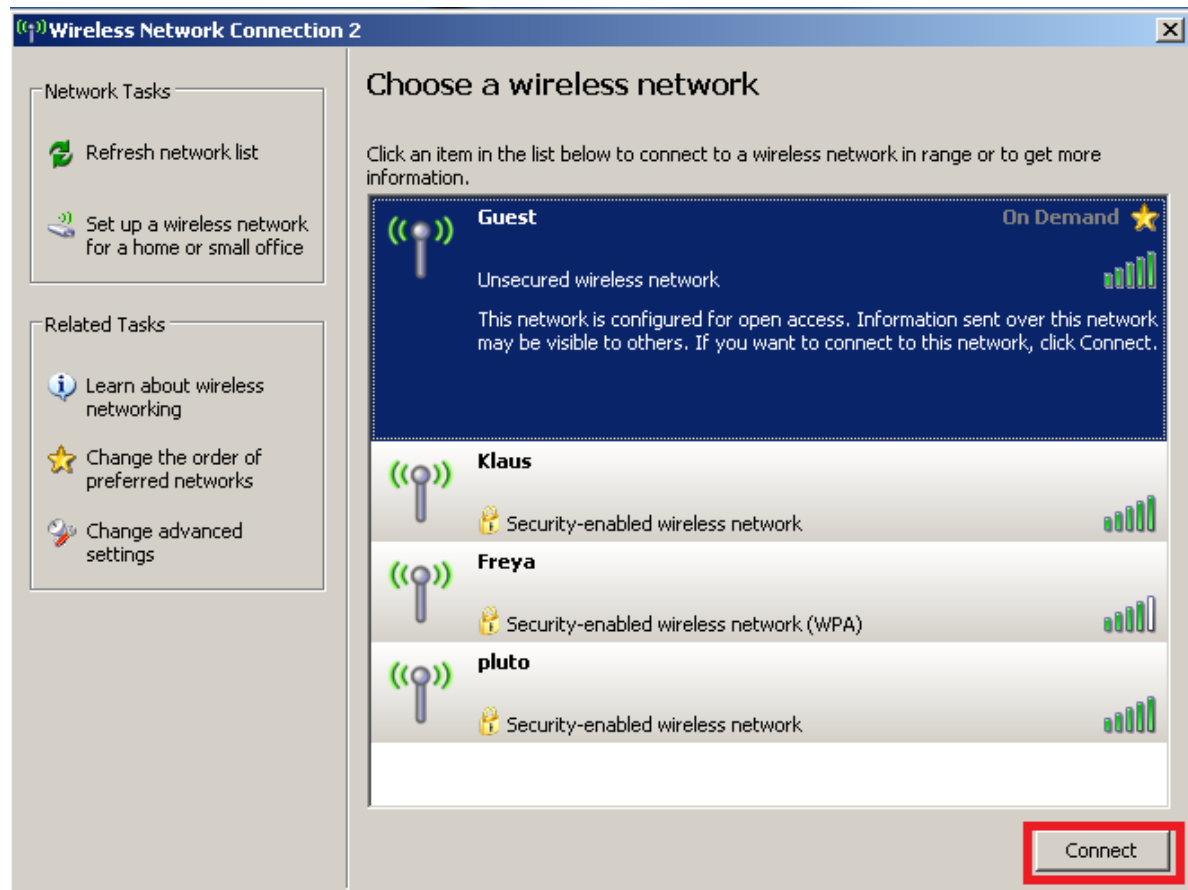
2. On **Windows XP**, right click on network icon in bottom right-hand corner and click **View Available Wireless Networks**.



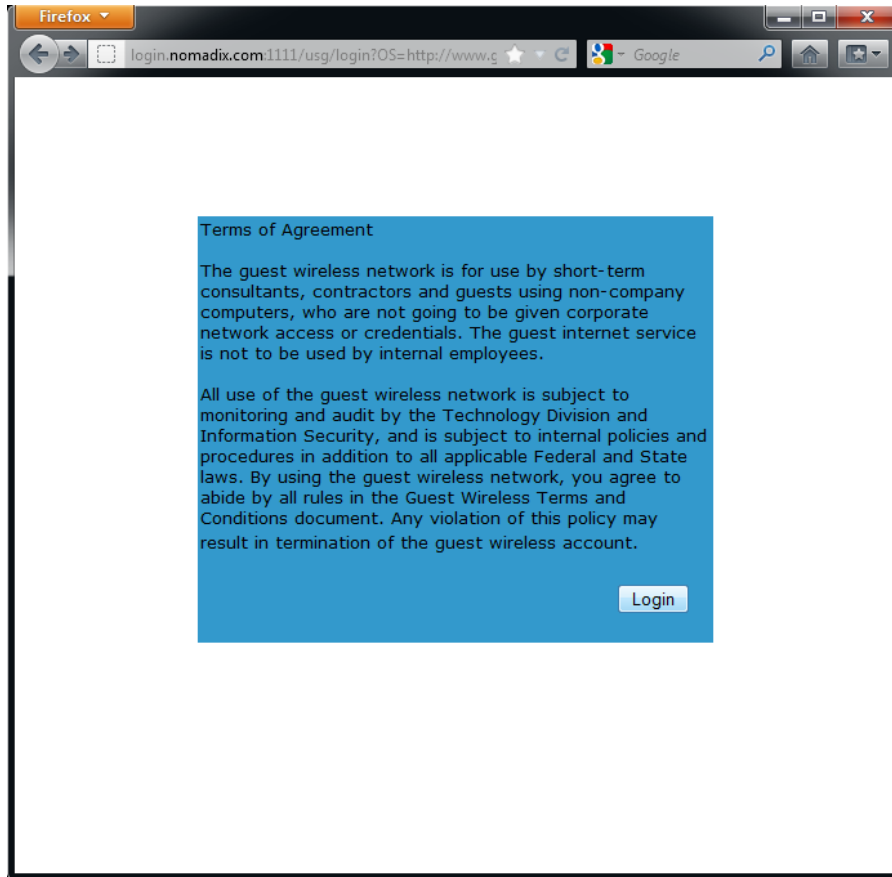
3. From the list of networks click **xguest** and check the box to **Connect automatically**. Then click **Connect**.

**For Windows 7:**

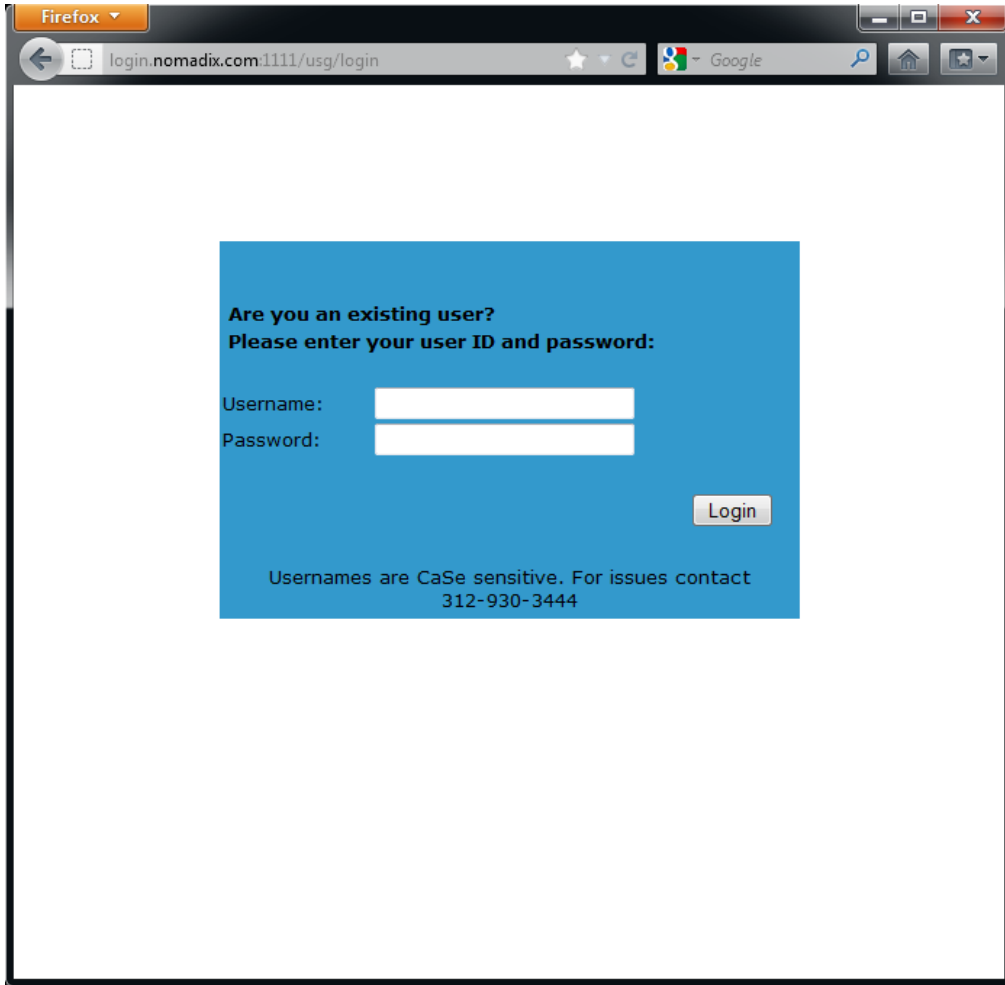


**For Windows XP:**

4. Open a browser. The system automatically redirects you to a webpage with CME Group Terms of Agreement.
5. Click the **Login** button.



6. Enter xguest username and password and click the **Login** button.



Firefox

login.nomadix.com:1111/usg/login

Are you an existing user?  
Please enter your user ID and password:

Username:

Password:

Login

Uppercase letters are CaSe sensitive. For issues contact  
312-930-3444