



EOS Trader™

New Functionality Overview

Release Date: 9/11/2009

Overview	1
New Functionality Overview.....	1
Launch Strategy Builder.....	1
The Strategy Builder Window	2
Exchange Recognized Strategy Leg Table	3
Modify a Strategy.....	3
Build a Delta Neutral Strategy.....	4
Create a User Defined Strategy from the List Window	5
Add a Strategy to a List Window.....	6

1. Overview

CME EOS Trader is an electronic trading application that makes it easy to trade CME options and options strategies, including User Defined Spreads on CME Globex. CME EOS Trader also allows for trading futures and futures strategies, managing working orders, and provides Firm Administrator functionality for managing trader groups, user access and contract permissions.

This document provides a brief overview of new functionality available in the latest release of CME EOS Trader.

The CME EOS Trader application includes Online Help that provides information about its full range of functionality. To access this information, complete the following steps:

1. Log into CME EOS Trader.
2. From the **Help** menu, click **Help Contents**.

1.1 New Functionality Overview

This new release of CME EOS Trader includes the addition of the Strategy Builder window. Strategy Builder integrates functionality previously found in the Create Generic and Create Covered features. Strategy Builder is used to create exchange recognized spreads, User Defined Spreads (UDS), and Delta Neutral (Covered) spreads.

Strategy Builder:

- simplifies strategy building by providing a template for each exchange recognized strategy type.
- simplifies creation of User Defined Spread (UDS) strategies.
- simplifies the process of adding a delta neutral strategy.

1.2 Launch Strategy Builder

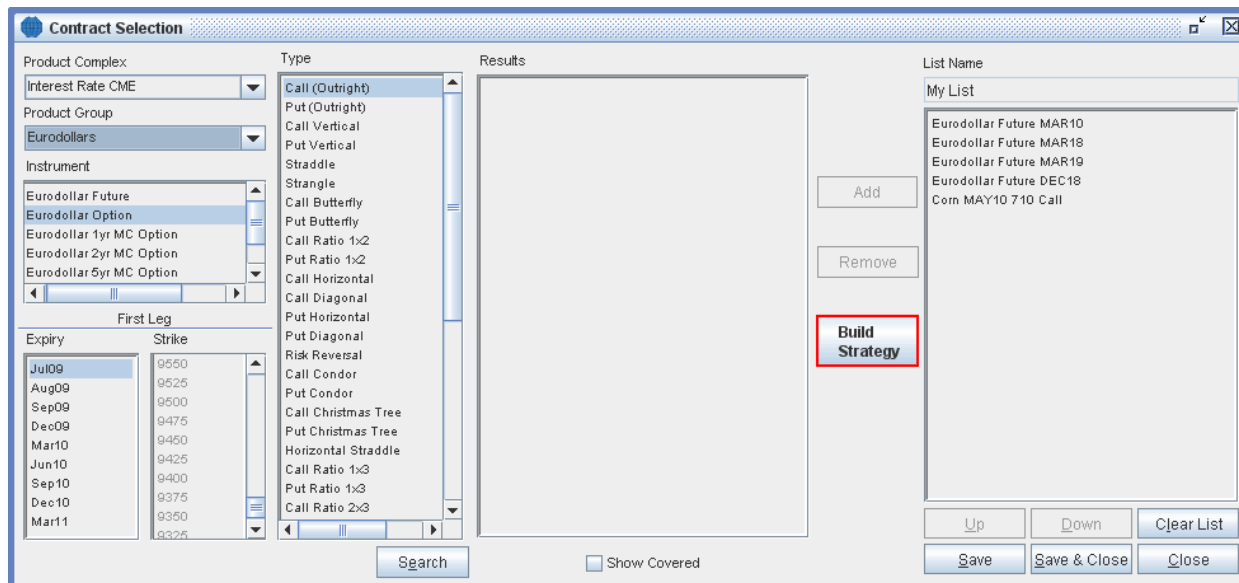
You can launch Strategy Builder by clicking the Build Strategy button found in the List window or the Contract Selection window.

Figure 1.1 Launch Strategy Builder from the List Window

Contract	Bid Qty	Bid Price	Ind-Bid	Ind-Ask	Ask Price	Ask Qty	CLast	Net Change	Volume	State	Timestamp
Eurodollar Future MAR10	-	-	-	-	-	-	-	-	-	-	-
Eurodollar Future MAR18	-	-	-	-	-	-	-	-	-	-	-
Eurodollar Future MAR19	-	-	-	-	-	-	-	-	-	-	-
KC Wheat DEC09 800 Call	3	11	-	-	-	-	1 @ 11	+1	35	-	14:51:46
Eurodollar Future DEC18	-	-	-	-	-	-	-	-	-	-	-

OR

Figure 1.2. Launch Strategy Builder from the Contract Selection Window



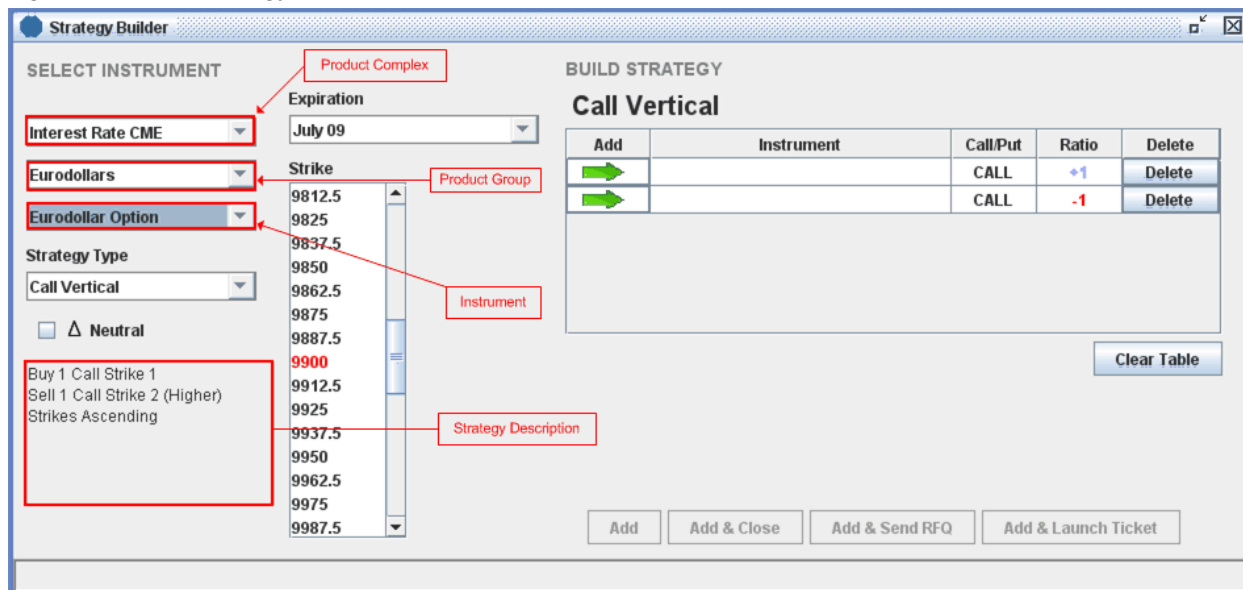
1.3 The Strategy Builder Window

The Strategy Builder window provides all of the functions necessary to create a spread, modify it, and add it to the List window.

On the left side of the window, you select a Product Complex, Product Group, Instrument, Strategy Type, Expiration, and Strike. The text box in the lower left corner contains a description of the selected strategy type from the buyer's perspective. You can also add a delta neutral strategy.

On the right side of the window, you can add an instrument to a specific row, overwrite a row, delete a row, move a row up/down, change the ratio, or delete the table.



Figure 1.3. The Strategy Builder Window



1.3.1 Exchange Recognized Strategy Leg Table





Strategy Builder generates a leg table template for each of the exchange recognized spreads.

Figure 1.4. Exchange Recognized Strategy Leg Table

BUILD STRATEGY				
Call Vertical				
Add	Instrument	Call/Put	Ratio	Delete
		CALL	+1	Delete
		CALL	-1	Delete


Strategy Builder generates a blank leg table with two rows for UDS strategies. You can use the left side of the Strategy Builder window to create instruments and add them to the leg table.

Figure 1.5. UDS Strategy Leg Table

BUILD STRATEGY				
UDS				
Populated Rows: 3				
Add	Instrument	Ratio		Delete
	Eurodollar SEP09 9925 Call	+1	▲ ▼	Delete
	Eurodollar NOV09 9950 Put	-4	▲ ▼	Delete
	Eurodollar DEC09 9925 Put	+2	▲ ▼	Delete
			▲ ▼	Delete

1.3.2 Modify a Strategy

You can use the following buttons to modify a strategy:

-  - Add an instrument to a specific row.
- **Delete** - Delete a row
- **Clear Table** - Clear the leg table
- **UP** [UDS Only] - Move an instrument to a higher row in the leg table.
- **Down** [UDS Only] - Move an instrument to a lower row in the leg table.

1.4 Build a Delta Neutral Strategy

You can make any outright call, put or strategy created through the Strategy Builder window delta neutral by adding one or more future legs.

Figure 1.6. Delta Neutral Check Box

The screenshot shows the 'Strategy Builder' window with the following settings:

- SELECT INSTRUMENT**
 - Interest Rate CME
 - Eurodollars
 - Eurodollar Option
- Expiration**: July 09
- Strike**: A list of strike prices from 9812.5 to 9987.5, with 9900 highlighted in red.
- Strategy Type**: Call Vertical
- Δ Neutral (highlighted with a red box)
- Buy 1 Call Strike 1
Sell 1 Call Strike 2 (Higher)
Strikes Ascending

A default instrument is created if there is an instrument in the first row of the leg table. You can edit the Instrument, Delta, or Price fields as needed.

Figure 1.7. Delta Neutral Table

BUILD STRATEGY

Call Vertical

Add	Instrument	Call/Put	Ratio	Delete
➔	Eurodollar JUL09 9875 Call	CALL	+1	Delete
➔	Eurodollar JUL09 9912.5 Call	CALL	-1	Delete

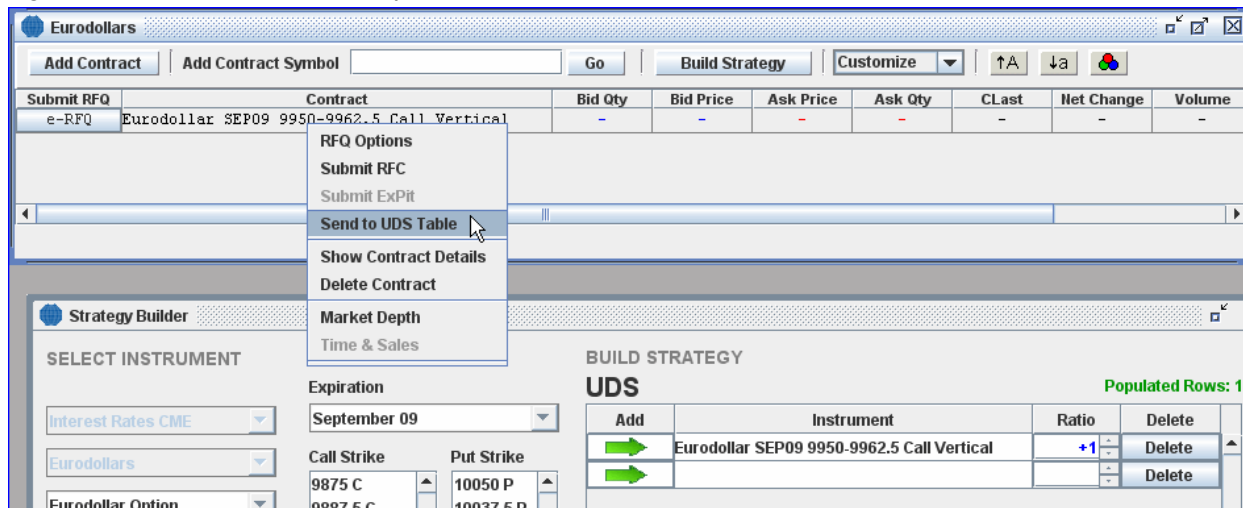
Δ Neutral

Instrument	Buy/Sell	Delta	Price
Eurodollar Future SEP09	<input type="radio"/> Buy <input checked="" type="radio"/> Sell	0.05	9895.0
	<input type="radio"/> Buy <input type="radio"/> Sell		

1.5 Create a User Defined Strategy from the List Window

With the **Send to UDS** option, you can add outright and strategies from the List window to the UDS leg table, where you can add legs or cover it with a future.

Figure 1.8. Send to UDS Table Option



1.6 Add a Strategy to a List Window

The following buttons can be used to add a strategy to a List window:

- **Add** - adds the instrument to the List window. Strategy Builder remains open.
- **Add & Close** - adds the instrument to the List window and closes Strategy Builder.
- **Add & Send RFQ** - adds the instrument to the List window, closes Strategy Builder, and sends a Request for Quote.
- **Add & Launch Ticket** - adds the instrument to the List window, closes Strategy Builder, and launches a bid ticket.