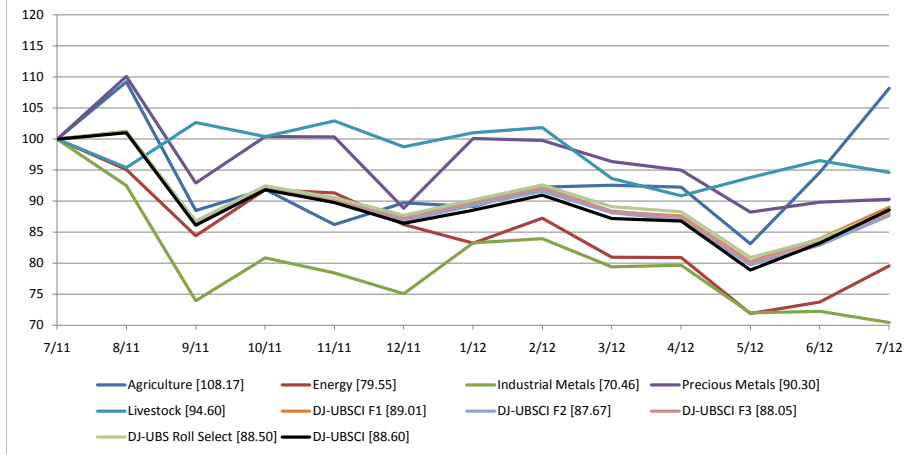


Dow Jones Indices Analytics

Dow Jones-UBS Commodity Indices

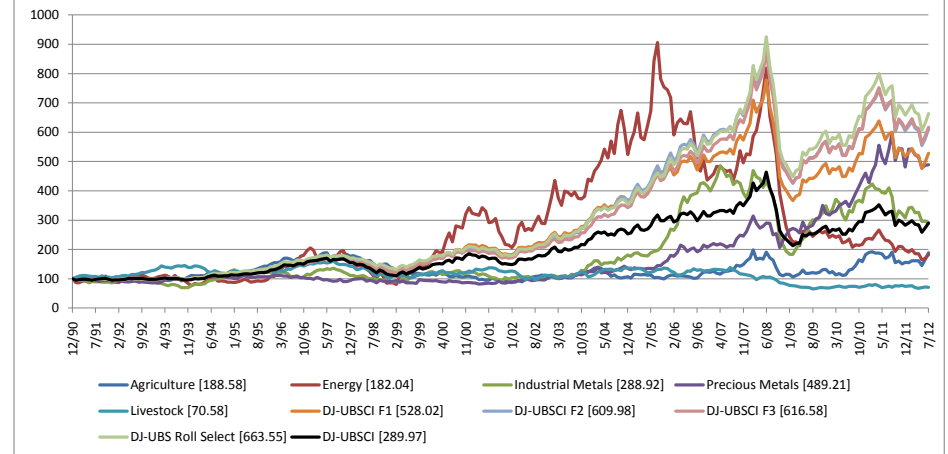
1-Year Performance

Comparison Period Ending July 31, 2012*



Cumulative Performance

Comparison Period: December 31, 1990 to July 31, 2012*



Short-Term Performance Statistics

Comparison Period Ending July 31, 2012*

	1-Month	3-Month	6-Month	1-Year	YTD
Dow Jones-UBS Agriculture Subindex	14.29%	17.27%	21.41%	8.17%	20.59%
Dow Jones-UBS Energy Subindex	7.90%	-1.67%	-4.42%	-20.45%	-7.73%
Dow Jones-UBS Industrial Metals Subindex	-2.48%	-11.55%	-15.39%	-29.54%	-6.16%
Dow Jones-UBS Precious Metals Subindex	0.52%	-4.94%	-9.80%	-9.70%	1.64%
Dow Jones-UBS Livestock Subindex	-2.02%	4.14%	-6.36%	-5.40%	-4.20%
Dow Jones-UBS Commodity Index 1 Month Forward	6.05%	1.62%	-0.45%	-10.99%	2.28%
Dow Jones-UBS Commodity Index 2 Month Forward	5.75%	0.77%	-1.85%	-12.33%	0.94%
Dow Jones-UBS Commodity Index 3 Month Forward	5.36%	0.66%	-1.91%	-11.95%	0.89%
Dow Jones-UBS Roll Select Commodity Index	5.52%	0.27%	-1.87%	-11.50%	0.87%
Dow Jones-UBS Commodity Index	6.47%	2.06%	0.05%	-11.40%	2.53%

Long-Term Performance Statistics

Comparison Period Ending July 31, 2012*

	3-Year	5-Year	7-Year	10-Year	Avail. Hist. (12/31/90)
Dow Jones-UBS Agriculture Subindex	16.77%	8.23%	7.50%	6.11%	2.98%
Dow Jones-UBS Energy Subindex	-11.27%	-17.29%	-17.03%	-3.70%	2.81%
Dow Jones-UBS Industrial Metals Subindex	0.22%	-8.69%	6.25%	11.39%	5.04%
Dow Jones-UBS Precious Metals Subindex	20.79%	17.98%	20.20%	18.00%	7.63%
Dow Jones-UBS Livestock Subindex	0.57%	-12.61%	-7.47%	-3.91%	-1.60%
Dow Jones-UBS Commodity Index 1 Month Forward	5.99%	-0.52%	3.25%	9.79%	8.01%
Dow Jones-UBS Commodity Index 2 Month Forward	5.94%	-0.34%	5.05%	11.75%	8.74%
Dow Jones-UBS Commodity Index 3 Month Forward	6.44%	0.88%	6.06%	12.27%	8.79%
Dow Jones-UBS Roll Select Commodity Index	6.94%	1.39%	6.60%	12.60%	9.16%
Dow Jones-UBS Commodity Index	4.56%	-2.84%	0.40%	5.68%	5.06%

Calendar Year Return

Comparison Period: December 31, 1990 to July 31, 2012*

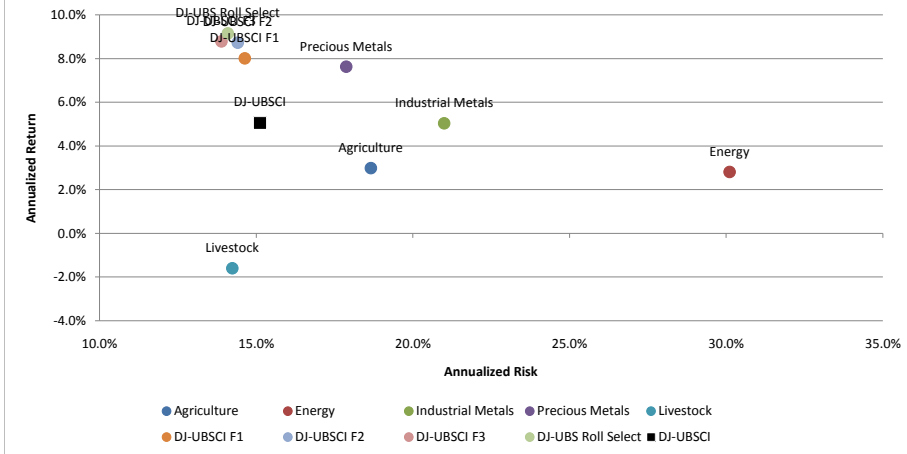
	2011	2010	2009	2008	2007	2006	2005	2004	2003	2002	2001	2000	Best Year Return	Worst Year Return	Batting Average vs. Market
Dow Jones-UBS Agriculture Subindex	-14.35%	38.49%	13.72%	-27.47%	29.89%	14.25%	1.08%	-12.85%	13.90%	19.13%	-17.32%	-2.56%	38.49%	-27.47%	47.62%
Dow Jones-UBS Energy Subindex	-15.97%	-10.55%	-5.30%	-47.33%	20.69%	-41.41%	42.16%	19.12%	31.72%	55.09%	-37.13%	120.36%	120.36%	-47.33%	47.62%
Dow Jones-UBS Industrial Metals Subindex	-24.23%	16.24%	79.98%	-48.27%	-9.86%	72.35%	33.47%	25.27%	43.53%	2.90%	-18.66%	-2.68%	79.98%	-48.27%	52.38%
Dow Jones-UBS Precious Metals Subindex	4.56%	42.66%	29.20%	-4.06%	25.95%	27.11%	20.44%	7.40%	20.29%	18.86%	1.24%	-7.76%	42.66%	-8.35%	42.86%
Dow Jones-UBS Livestock Subindex	-2.30%	9.27%	-15.07%	-28.41%	-10.67%	-6.12%	-0.26%	27.10%	-3.91%	-11.43%	-0.58%	8.46%	27.10%	-28.64%	33.33%
Dow Jones-UBS Commodity Index 1 Month Forward	-11.27%	17.84%	22.91%	-33.28%	20.34%	7.11%	28.81%	21.19%	27.89%	28.25%	-15.59%	33.97%	33.97%	-33.28%	85.71%
Dow Jones-UBS Commodity Index 2 Month Forward	-10.60%	18.70%	22.02%	-32.36%	21.45%	12.66%	37.67%	24.14%	30.94%	27.81%	-12.93%	27.95%	37.67%	-32.36%	85.71%
Dow Jones-UBS Commodity Index 3 Month Forward	-9.43%	18.68%	22.55%	-30.37%	24.49%	14.91%	35.91%	25.26%	26.92%	26.66%	-12.09%	23.48%	35.91%	-30.37%	80.95%
Dow Jones-UBS Roll Select Commodity Index	-8.81%	19.55%	23.12%	-29.81%	24.87%	15.04%	36.51%	20.45%	28.79%	28.52%	-14.93%	25.67%	36.51%	-29.81%	80.95%
Dow Jones-UBS Commodity Index	-13.32%	16.83%	18.91%	-35.65%	16.23%	2.07%	21.36%	9.15%	23.93%	25.91%	-19.51%	31.84%	31.84%	-35.65%	0.00%

Dow Jones Indices Analytics

Dow Jones-UBS Commodity Indices

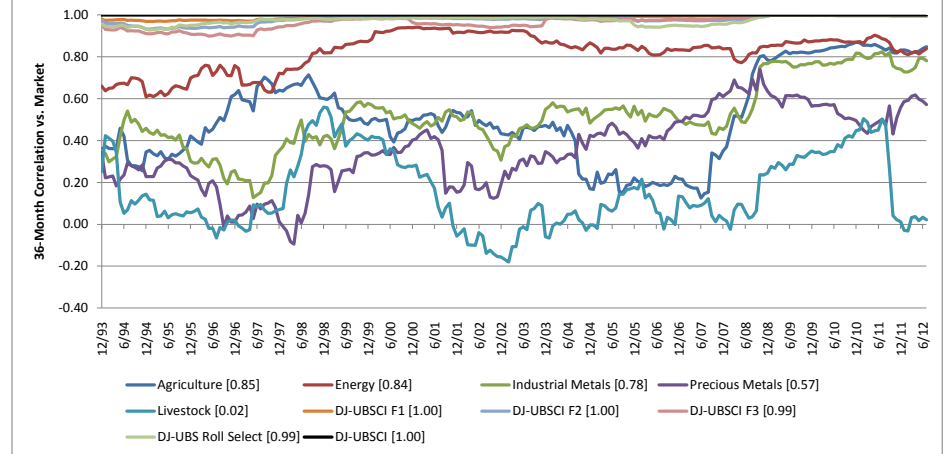
Risk / Return

Comparison Period: December 31, 1990 to July 31, 2012*



Rolling Correlation Statistics

Comparison Period: December 31, 1990 to July 31, 2012*



Annualized Risk

Comparison Period Ending July 31, 2012*

	3-Year	5-Year	7-Year	10-Year	Avail. Hist. (12/31/90)
Dow Jones-UBS Agriculture Subindex	26.29%	29.00%	25.91%	23.34%	18.66%
Dow Jones-UBS Energy Subindex	20.51%	30.59%	31.11%	31.70%	30.10%
Dow Jones-UBS Industrial Metals Subindex	24.52%	28.55%	27.53%	25.32%	21.00%
Dow Jones-UBS Precious Metals Subindex	24.38%	25.90%	23.94%	21.78%	17.88%
Dow Jones-UBS Livestock Subindex	13.92%	14.45%	14.71%	15.31%	14.24%
Dow Jones-UBS Commodity Index 1 Month Forward	17.50%	22.13%	20.00%	18.24%	14.63%
Dow Jones-UBS Commodity Index 2 Month Forward	17.28%	21.92%	19.99%	18.16%	14.41%
Dow Jones-UBS Commodity Index 3 Month Forward	17.32%	21.81%	19.71%	17.70%	13.89%
Dow Jones-UBS Roll Select Commodity Index	17.07%	21.77%	19.65%	17.80%	14.09%
Dow Jones-UBS Commodity Index	17.86%	22.39%	20.26%	18.51%	15.12%

Annualized Risk-Adjusted

Comparison Period Ending July 31, 2012*

	3-Year	5-Year	7-Year	10-Year	Avail. Hist. (12/31/90)
Dow Jones-UBS Agriculture Subindex	0.63	0.25	0.21	0.18	-0.02
Dow Jones-UBS Energy Subindex	-0.56	-0.59	-0.61	-0.18	-0.02
Dow Jones-UBS Industrial Metals Subindex	0.00	-0.34	0.16	0.38	0.08
Dow Jones-UBS Precious Metals Subindex	0.85	0.66	0.76	0.74	0.23
Dow Jones-UBS Livestock Subindex	0.03	-0.94	-0.64	-0.38	-0.35
Dow Jones-UBS Commodity Index 1 Month Forward	0.34	-0.06	0.06	0.44	0.31
Dow Jones-UBS Commodity Index 2 Month Forward	0.34	-0.06	0.15	0.55	0.37
Dow Jones-UBS Commodity Index 3 Month Forward	0.36	0.00	0.21	0.59	0.39
Dow Jones-UBS Roll Select Commodity Index	0.40	0.02	0.24	0.60	0.41
Dow Jones-UBS Commodity Index	0.25	-0.17	-0.08	0.21	0.11

Other Statistics

Comparison Period: December 31, 1990 to July 31, 2012*

	Annualized Return	Cumulative Return	Standard Deviation	Sharpe Ratio	Downside Deviation (MAR=0%)	Maximum Drawdown	Sortino Ratio	Excess Return	Tracking Error	Information Ratio	Up Capture vs. Market	Down Capture vs. Market	Alpha	Beta	Correlation vs. Market
Dow Jones-UBS Agriculture Subindex	2.98%	88.58%	18.66%	-0.02	12.44%	-53.15%	-0.04	-2.07%	14.98%	-0.14	62.73%	73.41%	-0.02%	0.77	0.62
Dow Jones-UBS Energy Subindex	2.81%	82.04%	30.10%	-0.02	18.08%	-81.83%	-0.03	-2.24%	19.69%	-0.11	175.11%	157.61%	-2.67%	1.63	0.82
Dow Jones-UBS Industrial Metals Subindex	5.04%	188.92%	21.00%	0.08	13.51%	-62.33%	0.12	-0.02%	16.77%	0.00	83.11%	84.47%	1.97%	0.85	0.61
Dow Jones-UBS Precious Metals Subindex	7.63%	389.21%	17.88%	0.23	11.40%	-34.37%	0.37	2.58%	17.44%	0.15	61.84%	47.37%	5.86%	0.53	0.45
Dow Jones-UBS Livestock Subindex	-1.60%	-29.42%	14.24%	-0.35	9.45%	-59.18%	-0.53	-6.66%	19.15%	-0.35	8.30%	25.87%	-1.44%	0.14	0.15
Dow Jones-UBS Commodity Index 1 Month Forward	8.01%	428.02%	14.63%	0.31	11.18%	-52.84%	0.41	2.96%	1.65%	1.79	104.08%	90.23%	2.99%	0.96	0.99
Dow Jones-UBS Commodity Index 2 Month Forward	8.74%	509.98%	14.41%	0.37	11.18%	-52.71%	0.47	3.68%	2.58%	1.43	102.98%	85.90%	3.79%	0.94	0.99
Dow Jones-UBS Commodity Index 3 Month Forward	8.79%	516.58%	13.89%	0.39	10.98%	-51.70%	0.49	3.74%	3.37%	1.11	97.86%	80.84%	4.03%	0.90	0.98
Dow Jones-UBS Roll Select Commodity Index	9.16%	563.55%	14.09%	0.41	10.97%	-51.54%	0.52	4.11%	3.00%	1.37	102.33%	83.32%	4.31%	0.91	0.98
Dow Jones-UBS Commodity Index	5.06%	189.97%	15.12%	0.11	11.37%	-54.26%	0.14	0.00%	0.00%	0.00	100.00%	100.00%	0.00%	1.00	1.00

Dow Jones Indices Analytics

Dow Jones-UBS Commodity Indices

Disclaimers

	Initial Publication Date*	Information with respect to each index may be found at the respective URLs listed below
Dow Jones-UBS Agriculture Subindex	July 7, 2005	http://www.djindexes.com/commodity/
Dow Jones-UBS Energy Subindex	November 15, 2001	http://www.djindexes.com/commodity/
Dow Jones-UBS Industrial Metals Subindex	November 15, 2001	http://www.djindexes.com/commodity/
Dow Jones-UBS Precious Metals Subindex	November 15, 2001	http://www.djindexes.com/commodity/
Dow Jones-UBS Livestock Subindex	November 15, 2001	http://www.djindexes.com/commodity/
Dow Jones-UBS Commodity Index 1 Month Forward	July 18, 2006	http://www.djindexes.com/commodity/
Dow Jones-UBS Commodity Index 2 Month Forward	July 18, 2006	http://www.djindexes.com/commodity/
Dow Jones-UBS Commodity Index 3 Month Forward	July 18, 2006	http://www.djindexes.com/commodity/
Dow Jones-UBS Roll Select Commodity Index	July 18, 2011	http://www.djindexes.com/commodity/
Dow Jones-UBS Commodity Index	July 14, 1998	http://www.djindexes.com/commodity/

*Each of the above-listed Indexes was first published as of the applicable initial publication date set forth in the table above. To the extent this document includes information for the index for the period prior to its initial publication date, such information is back-tested (i.e., calculations of how the index might have performed during that time period if the index had existed). And the comparisons, assertions and conclusions regarding the performance of the index during such time period are based on back-testing. Back-tested information is purely hypothetical and is provided in this document solely for informational purposes. Back-tested performance does not represent actual performance, and should not be interpreted as an indication of actual performance. Past performance is not indicative of future results.

© S&P/Dow Jones Indices LLC 2012. All rights reserved.

The above-listed Dow Jones-branded indexes are a product of Dow Jones Indexes, the marketing name and a licensed trademark of CME Group Index Services LLC ("S&P/Dow Jones Indices"). "Dow Jones[®]", "Dow Jones Indexes" and each of the related indexes identified herein are service marks of Dow Jones Trademark Holdings, LLC ("Dow Jones"), and have been licensed for use by S&P/Dow Jones Indices.

All information in these materials is provided "as is". S&P/Dow Jones Indices and its affiliates do not make any representation regarding the accuracy or completeness of these materials, the content of which may change without notice, and each of S&P/Dow Jones Indices and its affiliates disclaims liability related to these materials.

All information provided by S&P/Dow Jones Indices is impersonal and not tailored to the needs of any person, entity or group of persons. Dow Jones, its affiliates and S&P/Dow Jones Indices do not sponsor, endorse, sell, promote or manage any investment fund or other vehicle that is offered by third parties and that seeks to provide an investment return based on the returns of any index. S&P/Dow Jones Indices is not an investment advisor, and S&P/Dow Jones Indices makes no representation regarding the advisability of investing in any such investment fund or other vehicle. Inclusion of a security or instrument within an index is not a recommendation by Dow Jones, S&P/Dow Jones Indices or their respective affiliates to buy, sell, or hold such security or instrument, nor is it considered to be investment advice. Exposure to an asset class is available through investable instruments based on an index. It is not possible to invest directly in an index. There is no assurance that investment products based on the index will accurately track index performance or provide positive investment returns.

Redistribution, reproduction and/or photocopying in whole or in part is prohibited without written permission.

Source: Dow Jones Indexes Analytics & Research

For additional resources, please visit the Analytics & Research section of the Dow Jones Indexes website: <http://www.djindexes.com/literature/?go=analyticsandresearch>.